

[Close All Sections](#)

— HIGHLIGHTS OF PRESCRIBING INFORMATION

These highlights do not include all the information needed to use CYRAMZA safely and effectively. See full prescribing information for CYRAMZA.

CYRAMZA (ramucirumab) injection, for intravenous use
Initial U.S. Approval: 2014

INDICATIONS AND USAGE

CYRAMZA® is a human vascular endothelial growth factor receptor 2 (VEGFR2) antagonist indicated:

- as a single agent or in combination with paclitaxel, for treatment of advanced or metastatic gastric or gastro-esophageal junction adenocarcinoma with disease progression on or after prior fluoropyrimidine- or platinum-containing chemotherapy. (1.1)
- in combination with erlotinib, for first-line treatment of metastatic non-small cell lung cancer with epidermal growth factor receptor (EGFR) exon 19 deletions or exon 21 (L858R) mutations. (1.2)
- in combination with docetaxel, for treatment of metastatic non-small cell lung cancer with disease progression on or after platinum-based chemotherapy. Patients with EGFR or ALK genomic tumor aberrations should have disease progression on FDA-approved therapy for these aberrations prior to receiving CYRAMZA. (1.2)
- in combination with FOLFIRI, for the treatment of metastatic colorectal cancer with disease progression on or after prior therapy with bevacizumab, oxaliplatin, and a fluoropyrimidine. (1.3)
- as a single agent, for the treatment of hepatocellular carcinoma in patients who have an alpha fetoprotein of ≥ 400 ng/mL and have been treated with sorafenib. (1.4)

DOSAGE AND ADMINISTRATION

- For intravenous infusion only. Do not administer as an intravenous push or bolus. (2.7)
- Premedicate before each infusion. (2.1)
- Gastric Cancer: Administer CYRAMZA 8 mg/kg every 2 weeks as a single agent or in combination with weekly paclitaxel. (2.2)
- Non-Small Cell Lung Cancer:
 - Administer CYRAMZA 10 mg/kg every 2 weeks with daily erlotinib. (2.3)
 - Administer CYRAMZA 10 mg/kg on Day 1 of a 21-day cycle prior to docetaxel. (2.3)
- Colorectal Cancer: Administer CYRAMZA 8 mg/kg every 2 weeks prior to FOLFIRI. (2.4)
- Hepatocellular Carcinoma: Administer CYRAMZA 8 mg/kg every 2 weeks. (2.5)

DOSAGE FORMS AND STRENGTHS

Injection: 100 mg/10 mL (10 mg/mL) or 500 mg/50 mL (10 mg/mL) solution in a single-dose vial (3)

CONTRAINDICATIONS

None (4)

WARNINGS AND PRECAUTIONS

- Hemorrhage: CYRAMZA increases the risk of hemorrhage and gastrointestinal hemorrhage, including severe and fatal events. Permanently discontinue CYRAMZA in patients who experience severe bleeding. (5.1)
- Gastrointestinal Perforations: CYRAMZA increases the risk of gastrointestinal perforation, which can be fatal. Permanently discontinue CYRAMZA in patients who experience a gastrointestinal perforation. (5.2)
- Impaired Wound Healing: Withhold CYRAMZA for 28 days prior to elective surgery. Do not administer CYRAMZA for at least 2 weeks following a major surgical procedure and until adequate wound healing. The safety of resumption of CYRAMZA after resolution of wound healing complications has not been established. (5.3)



- **Arterial Thromboembolic Events (ATEs):** Serious and sometimes fatal ATEs can occur with CYRAMZA. Permanently discontinue CYRAMZA in patients who experience an ATE. (5.4)
- **Hypertension:** Monitor blood pressure and treat hypertension. Withhold CYRAMZA for severe hypertension. Permanently discontinue CYRAMZA for hypertension that cannot be controlled with antihypertensive therapy and for hypertensive crisis or hypertensive encephalopathy. (5.5)
- **Infusion-Related Reactions (IRR):** Monitor for signs and symptoms during infusion. Reduce the infusion rate for Grade 1 or 2 IRR and permanently discontinue for Grade 3 or 4 IRR. (5.6)
- **Worsening of Pre-existing Hepatic Impairment:** New onset or worsening encephalopathy, ascites or hepatorenal syndrome can occur in patients with Child-Pugh B or C cirrhosis. (5.7)
- **Posterior Reversible Encephalopathy Syndrome:** Permanently discontinue CYRAMZA. (5.8)
- **Proteinuria Including Nephrotic Syndrome:** Monitor for proteinuria. Withhold CYRAMZA for urine protein levels greater than or equal to 2 g per 24 hours. Permanently discontinue CYRAMZA for urine protein levels greater than 3 g per 24 hours or nephrotic syndrome. (5.9)
- **Thyroid Dysfunction:** Monitor thyroid function during treatment. (5.10)
- **Embryo-Fetal Toxicity:** Can cause fetal harm. Advise females of reproductive potential of the potential risk to a fetus and to use effective contraception. (5.11, 8.1, 8.3)

ADVERSE REACTIONS

- The most common adverse reactions observed in single agent CYRAMZA-treated gastric cancer patients at a rate of $\geq 10\%$ and $\geq 2\%$ higher than placebo were hypertension and diarrhea. (6.1)
- The most common adverse reactions observed in patients treated with CYRAMZA with paclitaxel at a rate of $\geq 30\%$ and $\geq 2\%$ higher than placebo with paclitaxel were fatigue/asthenia, neutropenia, diarrhea, and epistaxis. (6.1)
- The most common adverse reactions observed in patients treated with CYRAMZA with erlotinib at a rate of $\geq 30\%$ and $\geq 2\%$ higher than placebo with erlotinib were, infections, hypertension, stomatitis, proteinuria, alopecia, and epistaxis. The most common laboratory abnormalities at a rate of $\geq 30\%$ and $\geq 2\%$ higher difference in incidence between arms were increased alanine aminotransferase, increased aspartate aminotransferase, anemia, thrombocytopenia, and neutropenia. (6.1)
- The most common adverse reactions observed in patients treated with CYRAMZA with docetaxel at a rate of $\geq 30\%$ and $\geq 2\%$ higher than placebo with docetaxel were neutropenia, fatigue/asthenia, and stomatitis/mucosal inflammation. (6.1)
- The most common adverse reactions observed in patients treated with CYRAMZA with FOLFIRI at a rate of $\geq 30\%$ and $\geq 2\%$ higher than placebo with FOLFIRI were diarrhea, neutropenia, decreased appetite, epistaxis, and stomatitis. (6.1)
- The most common adverse reactions observed in single agent CYRAMZA-treated HCC patients at a rate of $\geq 15\%$ and $\geq 2\%$ higher than placebo were fatigue, peripheral edema, hypertension, abdominal pain, decreased appetite, proteinuria, nausea, and ascites. The most common laboratory abnormalities at a rate of $\geq 30\%$ and a $\geq 2\%$ higher difference in incidence between arms were thrombocytopenia, hypoalbuminemia, and hyponatremia. (6.1)

To report SUSPECTED ADVERSE REACTIONS, contact Eli Lilly and Company at 1-800-LillyRx (1-800-545-5979) or FDA at 1-800-FDA-1088 or www.fda.gov/medwatch.

USE IN SPECIFIC POPULATIONS

- **Lactation:** Advise not to breastfeed. (8.2)

See 17 for PATIENT COUNSELING INFORMATION.

Revised: 1/2025

[Hide](#)

 FULL PRESCRIBING INFORMATION: CONTENTS*



1 INDICATIONS AND USAGE

1.1 Gastric Cancer

1.2 Non-Small Cell Lung Cancer

1.3 Colorectal Cancer

1.4 Hepatocellular Carcinoma

2 DOSAGE AND ADMINISTRATION

2.1 Premedication

2.2 Recommended Dosage for Gastric Cancer

2.3 Recommended Dosage for Non-Small Cell Lung Cancer

2.4 Recommended Dosage for Colorectal Cancer

2.5 Recommended Dosage for Hepatocellular Carcinoma

2.6 Dosage Modifications for Adverse Reactions

2.7 Preparation and Administration

3 DOSAGE FORMS AND STRENGTHS

4 CONTRAINDICATIONS

5 WARNINGS AND PRECAUTIONS

5.1 Hemorrhage

5.2 Gastrointestinal Perforations

5.3 Impaired Wound Healing

5.4 Arterial Thromboembolic Events

5.5 Hypertension

5.6 Infusion-Related Reactions

5.7 Worsening of Pre-existing Hepatic Impairment

5.8 Posterior Reversible Encephalopathy Syndrome

5.9 Proteinuria Including Nephrotic Syndrome

5.10 Thyroid Dysfunction

5.11 Embryo-Fetal Toxicity

6 ADVERSE REACTIONS

6.1 Clinical Trials Experience

6.2 Immunogenicity



6.3 Postmarketing Experience

8 USE IN SPECIFIC POPULATIONS

8.1 Pregnancy

8.2 Lactation

8.3 Females and Males of Reproductive Potential

8.4 Pediatric Use

8.5 Geriatric Use

8.6 Hepatic Impairment

11 DESCRIPTION

12 CLINICAL PHARMACOLOGY

12.1 Mechanism of Action

12.3 Pharmacokinetics

13 NONCLINICAL TOXICOLOGY

13.1 Carcinogenesis, Mutagenesis, Impairment of Fertility

13.2 Animal Toxicology and/or Pharmacology

14 CLINICAL STUDIES

14.1 Gastric Cancer

14.2 Non-Small Cell Lung Cancer

14.3 Colorectal Cancer

14.4 Hepatocellular Carcinoma

16 HOW SUPPLIED/STORAGE AND HANDLING

17 PATIENT COUNSELING INFORMATION

* Sections or subsections omitted from the full prescribing information are not listed.

[Hide](#)

1 INDICATIONS AND USAGE

1.1 Gastric Cancer

CYRAMZA[®], as a single agent or in combination with paclitaxel, is indicated for the treatment of patients with advanced or metastatic, gastric or gastro-esophageal junction (GEJ) adenocarcinoma with disease progression on or after prior fluoropyrimidine- or platinum-containing chemotherapy.

1.2 Non-Small Cell Lung Cancer

CYRAMZA, in combination with erlotinib, is indicated for the first-line treatment of patients with metastatic non-small cell lung cancer (NSCLC) whose tumors have epidermal growth factor receptor (EGFR) exon 19 deletions or exon 21 (L858R) substitution mutations.

CYRAMZA, in combination with docetaxel, is indicated for the treatment of patients with metastatic non-small cell lung cancer (NSCLC) with disease progression on or after platinum-based chemotherapy. Patients with



percutaneous growth factor receptor (EGFR) or anaplastic lymphoma kinase (ALK) genomic tumor aberrations should have disease progression on FDA-approved therapy for these aberrations prior to receiving CYRAMZA.

1.3 Colorectal Cancer

CYRAMZA, in combination with FOLFIRI (irinotecan, folinic acid, and fluorouracil), is indicated for the treatment of patients with metastatic colorectal cancer (mCRC) with disease progression on or after prior therapy with bevacizumab, oxaliplatin, and a fluoropyrimidine.

1.4 Hepatocellular Carcinoma

CYRAMZA, as a single agent, is indicated for the treatment of patients with hepatocellular carcinoma (HCC) who have an alpha fetoprotein (AFP) of ≥ 400 ng/mL and have been treated with sorafenib.

[Hide](#)

2 DOSAGE AND ADMINISTRATION

2.1 Premedication

- Prior to each CYRAMZA infusion, premedicate all patients with an intravenous histamine-1 receptor antagonist (e.g., diphenhydramine hydrochloride) [see *Warnings and Precautions* (5.6)].
- For patients who have experienced a Grade 1 or 2 IRR, premedicate with a histamine-1 receptor antagonist, dexamethasone (or equivalent), and acetaminophen prior to each CYRAMZA infusion [see *Dosage and Administration* (2.6)].

2.2 Recommended Dosage for Gastric Cancer

- The recommended dosage of CYRAMZA, either as a single agent or in combination with weekly paclitaxel, is 8 mg/kg every 2 weeks administered by intravenous infusion over 60 minutes. If the first infusion is tolerated, all subsequent CYRAMZA infusions may be administered over 30 minutes. Continue CYRAMZA until disease progression or unacceptable toxicity.
- When given in combination with paclitaxel, administer CYRAMZA prior to administration of paclitaxel.
- Refer to the prescribing information for paclitaxel for dosage information.

2.3 Recommended Dosage for Non-Small Cell Lung Cancer

EGFR Exon 19 Deletions or Exon 21 (L858R) Substitution Mutations – CYRAMZA in Combination with Erlotinib

- The recommended dosage of CYRAMZA is 10 mg/kg every 2 weeks administered by intravenous infusion over 60 minutes. If the first infusion is tolerated, all subsequent CYRAMZA infusions may be administered over 30 minutes. Continue CYRAMZA until disease progression or unacceptable toxicity.
- Refer to the prescribing information for erlotinib for dosage information.

Disease Progression On Or After Platinum-based Chemotherapy – CYRAMZA in Combination with Docetaxel

- The recommended dosage of CYRAMZA is 10 mg/kg administered by intravenous infusion over 60 minutes on Day 1 of a 21-day cycle prior to docetaxel infusion. If the first infusion is tolerated, all subsequent CYRAMZA infusions may be administered over 30 minutes. Continue CYRAMZA until disease progression or unacceptable toxicity.
- Refer to the prescribing information for docetaxel for dosage information.

2.4 Recommended Dosage for Colorectal Cancer

- The recommended dosage of CYRAMZA is 8 mg/kg every 2 weeks administered by intravenous infusion over 60 minutes prior to FOLFIRI administration. If the first infusion is tolerated, all subsequent CYRAMZA infusions may be administered over 30 minutes. Continue CYRAMZA until disease progression or unacceptable toxicity.
- Refer to the prescribing information for fluorouracil, leucovorin, and irinotecan for dosage information.

2.5 Recommended Dosage for Hepatocellular Carcinoma

- The recommended dosage of CYRAMZA is 8 mg/kg every 2 weeks administered by intravenous infusion over 60 minutes. If the first infusion is tolerated, all subsequent CYRAMZA infusions may be administered

over 30 minutes. Continue CYRAMZA until disease progression or unacceptable toxicity.

2.6 Dosage Modifications for Adverse Reactions

Reduce dose, withhold dose, or discontinue CYRAMZA to manage adverse reactions as described in [Table 1](#).

Table 1: Dosage Modifications for CYRAMZA

Adverse Reaction	Severity^a	Dosage Modification
Hemorrhage [see <i>Warnings and Precautions (5.1)</i>]	Grade 3 or 4	Permanently discontinue CYRAMZA
Gastrointestinal Perforation [see <i>Warnings and Precautions (5.2)</i>]	All Grades	Permanently discontinue CYRAMZA
Wound Healing Complications [see <i>Warnings and Precautions (5.3)</i>]	All Grades	<ul style="list-style-type: none"> Withhold CYRAMZA for 28 days prior to elective surgery. Resume CYRAMZA no sooner than 2 weeks after surgery and until adequate wound healing. The safety of resumption of CYRAMZA after resolution of wound healing complications has not been established.
Arterial Thromboembolic Events [see <i>Warnings and Precautions (5.4)</i>]	All Grades	Permanently discontinue CYRAMZA
Hypertension [see <i>Warnings and Precautions (5.5)</i>]	Severe hypertension	Withhold CYRAMZA until controlled with medical management
	Severe hypertension that cannot be controlled with antihypertensive therapy	Permanently discontinue CYRAMZA
Infusion-Related Reaction (IRR) [see <i>Dosage and Administration (2.1)</i> , <i>Warnings and Precautions (5.6)</i>]	Grade 1 or 2 IRR	Reduce the infusion rate of CYRAMZA by 50%
	Grade 3 or 4 IRR	Permanently discontinue CYRAMZA
Posterior Reversible Encephalopathy Syndrome (PRES) [see <i>Warnings and Precautions (5.8)</i>]	All Grades	Permanently discontinue CYRAMZA
Proteinuria [see <i>Warnings and Precautions (5.9)</i>]	First occurrence of increased urine protein levels greater than or equal to 2 g per 24 hours	<ul style="list-style-type: none"> Withhold CYRAMZA until urine protein level is less than 2 g per 24 hours Resume CYRAMZA at a reduced dose: <ul style="list-style-type: none"> Reduce 8 mg dose to 6 mg Reduce 10 mg dose to 8 mg
	Reoccurrence of urine protein level greater than 2 g per 24 hours following initial dose reduction	<ul style="list-style-type: none"> Withhold CYRAMZA until urine protein level is less than 2 g per 24 hours Resume CYRAMZA at a reduced dose: <ul style="list-style-type: none"> Reduce 6 mg dose to 5 mg Reduce 8 mg dose to 6 mg

^a National Cancer Institute Common Toxicity Criteria for Adverse Events (NCI CTCAE) version 4.0 used to identify adverse reactions



Adverse Reaction	Severity ^a	Dosage Modification
	Urine protein level greater than 3 g per 24 hours or in the setting of nephrotic syndrome	Permanently discontinue CYRAMZA

^a National Cancer Institute Common Toxicity Criteria for Adverse Events (NCI CTCAE) version 4.0 used to identify adverse reactions

2.7 Preparation and Administration

Preparation

- Visually inspect vials for particulate matter and discoloration. Discard if particulate matter or discolorations are identified.
- Calculate the dose and the required volume of CYRAMZA needed for the calculated dose.
- Withdraw the required volume of CYRAMZA and further dilute with only 0.9% Sodium Chloride Injection in an intravenous infusion container to a final volume of 250 mL. **Do not use dextrose containing solutions.**
- **Do not shake.** Gently invert the container to ensure adequate mixing.
- **Do not dilute** with other solutions or co-infuse with other electrolytes or medications.
- **Do not freeze.** Store diluted solution for no more than 24 hours at 2°C to 8°C (36°F to 46°F) or 4 hours at room temperature (below 25°C [77°F]).
- Discard any unused portion of CYRAMZA.

Administration

- Visually inspect the diluted solution for particulate matter and discoloration prior to administration. Discard if particulate matter or discolorations are identified.
- Do not administer CYRAMZA as an intravenous push or bolus.
- Administer diluted CYRAMZA solution via infusion pump through a separate infusion line. Use of a protein sparing 0.22 micron filter is recommended.
- Flush the line with sterile 0.9% Sodium Chloride Injection at the end of the infusion.

[Hide](#)

3 DOSAGE FORMS AND STRENGTHS

Injection: 100 mg/10 mL (10 mg/mL) or 500 mg/50 mL (10 mg/mL) clear to slightly opalescent, colorless to slightly yellow solution in a single-dose vial

[Hide](#)

4 CONTRAINDICATIONS

None

[Hide](#)

5 WARNINGS AND PRECAUTIONS

5.1 Hemorrhage

CYRAMZA increased the risk of hemorrhage and gastrointestinal hemorrhage, including Grade ≥ 3 hemorrhagic events. Across six clinical studies in 2137 patients with various cancers treated with CYRAMZA, the incidence of all Grade hemorrhage ranged from 13-55%. Grade 3-5 hemorrhage incidence ranged from 2-5% [see Adverse Reactions (6.1)].

Patients with gastric cancer receiving nonsteroidal anti-inflammatory drugs (NSAIDs) were excluded from enrollment in REGARD and RAINBOW; therefore, the risk of gastric hemorrhage in CYRAMZA-treated patients with gastric tumors receiving NSAIDs is unknown.

Patients with NSCLC receiving therapeutic anticoagulation or with evidence of major airway invasion by cancer were excluded from REVEL. In addition, patients with NSCLC with a recent history of gross hemoptysis, the receiving chronic therapy with NSAIDs or other anti-platelet therapy other than once daily aspirin, or with

radiographic evidence of major vessel invasion or intratumor cavitation were excluded from REVEL and RELAY; therefore, the risk of pulmonary hemorrhage in these groups of patients is unknown.

Permanently discontinue CYRAMZA in patients who experience severe (Grade 3 or 4) bleeding [see *Dosage and Administration* (2.6)].

5.2 Gastrointestinal Perforations

CYRAMZA can increase the risk of gastrointestinal perforation, a potentially fatal event. Across six clinical studies in 2137 patients with various cancers treated with CYRAMZA, the incidence of all Grade and Grade 3-5 gastrointestinal perforations ranged from <1-2% [see *Adverse Reactions* (6.1)].

Permanently discontinue CYRAMZA in patients who experience a gastrointestinal perforation [see *Dosage and Administration* (2.6)].

5.3 Impaired Wound Healing

Impaired wound healing can occur in patients who receive drugs that inhibit the VEGF or VEGFR pathway. CYRAMZA, a VEGFR2 antagonist, has the potential to adversely affect wound healing. CYRAMZA has not been studied in patients with serious or non-healing wounds.

Withhold CYRAMZA for 28 days prior to elective surgery. Do not administer CYRAMZA for at least 2 weeks following a major surgical procedure and until adequate wound healing. The safety of resumption of CYRAMZA after resolution of wound healing complications has not been established [see *Dosage and Administration* (2.6)].

5.4 Arterial Thromboembolic Events

Serious, sometimes fatal, arterial thromboembolic events (ATEs), including myocardial infarction, cardiac arrest, cerebrovascular accident, and cerebral ischemia, occurred across clinical trials. Across six clinical studies in 2137 patients with various cancers treated with CYRAMZA, the incidence of all Grade ATE was 1-3%. Grade 3-5 ATE incidence was <1-2% [see *Adverse Reactions* (6.1)].

Permanently discontinue CYRAMZA in patients who experience an ATE [see *Dosage and Administration* (2.6)].

5.5 Hypertension

An increased incidence of severe hypertension occurred in patients receiving CYRAMZA. Across five clinical studies, excluding RELAY, in 1916 patients with various cancers treated with CYRAMZA, the incidence of all Grade hypertension ranged from 11-26%. Grade 3-5 hypertension incidence ranged from 6-15% [see *Adverse Reactions* (6.1)]. In 221 patients with NSCLC receiving CYRAMZA in combination with erlotinib in the RELAY study, the incidence of new or worsening hypertension was higher (45%), as was the incidence of Grade 3-5 hypertension (24%). Of the patients experiencing new or worsening hypertension in RELAY (N=100 CYRAMZA and erlotinib; N=27 placebo and erlotinib), 13% of those treated with CYRAMZA and erlotinib required initiation of 3 or more antihypertensive medications compared to 4% of patients treated with placebo and erlotinib.

Control hypertension prior to initiating treatment with CYRAMZA. Monitor blood pressure every two weeks or more frequently as indicated during treatment. Withhold CYRAMZA for severe hypertension until medically controlled. Permanently discontinue CYRAMZA for medically significant hypertension that cannot be controlled with antihypertensive therapy or in patients with hypertensive crisis or hypertensive encephalopathy [see *Dosage and Administration* (2.6)].

5.6 Infusion-Related Reactions

Infusion-related reactions (IRR), including severe and life-threatening IRR, occurred in CYRAMZA clinical trials. The majority of IRR across trials occurred during or following a first or second CYRAMZA infusion. Symptoms of IRR included rigors/tremors, back pain/spasms, chest pain and/or tightness, chills, flushing, dyspnea, wheezing, hypoxia, and paresthesia. In severe cases, symptoms included bronchospasm, supraventricular tachycardia, and hypotension. Across six clinical studies in 2137 patients with various cancers treated with CYRAMZA in which premedication was recommended or required, the incidence of all Grade IRR ranged from <1-9%. Grade 3-5 IRR incidence was <1% [see *Adverse Reactions* (6.1)].



Premedicate prior to each CYRAMZA infusion [see *Dosage and Administration* (2.1)]. Monitor patients during the infusion for signs and symptoms of IRR in a setting with available resuscitation equipment. Reduce the infusion rate by 50% for Grade 1-2 IRR. Permanently discontinue CYRAMZA for Grade 3-4 IRR [see *Dosage and Administration* (2.6)].

5.7 Worsening of Pre-existing Hepatic Impairment

Clinical deterioration, manifested by new onset or worsening encephalopathy, ascites, or hepatorenal syndrome, was reported in patients with Child-Pugh B or C cirrhosis who received single agent CYRAMZA. Use CYRAMZA in patients with Child-Pugh B or C cirrhosis only if the potential benefits of treatment are judged to outweigh the risks of clinical deterioration.

Based on safety data from REACH-2, in patients with Child-Pugh A liver cirrhosis, the pooled incidence of hepatic encephalopathy and hepatorenal syndrome was higher for patients who received CYRAMZA (6%) compared to patients who received placebo (0%) [see *Adverse Reactions* (6.1)].

5.8 Posterior Reversible Encephalopathy Syndrome

Posterior Reversible Encephalopathy Syndrome (PRES) (also known as Reversible Posterior Leukoencephalopathy Syndrome [RPLS]) has been reported in <0.1% of 2137 patients enrolled in six clinical studies with CYRAMZA. Symptoms of PRES include seizure, headache, nausea/vomiting, blindness, or altered consciousness, with or without associated hypertension.

Confirm the diagnosis of PRES with magnetic resonance imaging and permanently discontinue CYRAMZA in patients who develop PRES. Symptoms may resolve or improve within days, although some patients with PRES can experience ongoing neurologic sequelae or death [see *Dosage and Administration* (2.6)].

5.9 Proteinuria Including Nephrotic Syndrome

Across six clinical studies in 2137 patients with various cancers treated with CYRAMZA, the incidence of all Grade proteinuria ranged from 3-34%. Grade ≥ 3 proteinuria (including 4 patients with nephrotic syndrome) incidence ranged from <1-3% [see *Adverse Reactions* (6.1)].

Monitor proteinuria by urine dipstick and/or urinary protein creatinine ratio. If the result of the urine dipstick is 2+ or greater, perform a 24-hour urine collection for protein measurement. Withhold CYRAMZA for urine protein levels that are 2 or more grams over 24 hours. Reinitiate CYRAMZA at a reduced dose once the urine protein level returns to less than 2 grams over 24 hours. Permanently discontinue CYRAMZA for urine protein levels greater than 3 grams over 24 hours or in the setting of nephrotic syndrome [see *Dosage and Administration* (2.6)].

5.10 Thyroid Dysfunction

Across six clinical studies in 2137 patients with various cancers treated with CYRAMZA, the incidence of Grade 1-2 hypothyroidism ranged from <1-3%; there were no reports of Grade 3-5 hypothyroidism [see *Adverse Reactions* (6.1)]. Monitor thyroid function during treatment with CYRAMZA.

5.11 Embryo-Fetal Toxicity

Based on its mechanism of action, CYRAMZA can cause fetal harm when administered to pregnant women. Animal models link angiogenesis, VEGF and VEGFR2 to critical aspects of female reproduction, embryo-fetal development, and postnatal development. Advise pregnant women of the potential risk to a fetus. Advise females of reproductive potential to use effective contraception during treatment with CYRAMZA and for 3 months after the last dose [see *Use in Specific Populations* (8.1, 8.3)].

[Hide](#)

6 ADVERSE REACTIONS

The following serious adverse reactions are described elsewhere in the labeling:

- Hemorrhage [see *Warnings and Precautions* (5.1)].
- Gastrointestinal Perforations [see *Warnings and Precautions* (5.2)].
- Impaired Wound Healing [see *Warnings and Precautions* (5.3)].



- Arterial Thromboembolic Events [see Warnings and Precautions (5.4)].
- Hypertension [see Warnings and Precautions (5.5)].
- Infusion-Related Reactions [see Warnings and Precautions (5.6)].
- Worsening of Pre-existing Hepatic Impairment [see Warnings and Precautions (5.7)].
- Posterior Reversible Encephalopathy Syndrome [see Warnings and Precautions (5.8)].
- Proteinuria Including Nephrotic Syndrome [see Warnings and Precautions (5.9)].
- Thyroid Dysfunction [see Warnings and Precautions (5.10)].

6.1 Clinical Trials Experience

Because clinical trials are conducted under widely varying conditions, adverse reaction rates observed in the clinical trials of a drug cannot be directly compared to rates in the clinical trials of another drug and may not reflect the rates observed in practice.

The data described in the Warnings and Precautions section reflect exposure to CYRAMZA in 2137 patients from six studies: REGARD, RAINBOW, RAISE, REVEL, REACH-2, and RELAY.

Gastric Cancer

The safety of CYRAMZA was evaluated in REGARD and RAINBOW [see Clinical Studies (14.1)]. Patients in both trials had locally advanced or metastatic gastric cancer (including GEJ adenocarcinoma) and had previously received platinum- or fluoropyrimidine-containing chemotherapy. Patients had Eastern Cooperative Oncology Group (ECOG) performance status (PS) of 0 or 1. Both trials excluded patients with uncontrolled hypertension, major surgery within 28 days, or patients receiving chronic anti-platelet therapy other than once daily aspirin. REGARD excluded patients with bilirubin ≥ 1.5 mg/dL and RAINBOW excluded patients with bilirubin > 1.5 times the upper limit of normal (ULN).

CYRAMZA Administered as a Single Agent (REGARD)

Patients received either CYRAMZA 8 mg/kg or placebo intravenously every two weeks. Patients randomized to CYRAMZA received a median of 4 doses; the median duration of exposure was 8 weeks and 32 (14% of 236) patients received CYRAMZA for at least six months.

The most common serious adverse reactions with CYRAMZA were anemia (3.8%) and intestinal obstruction (2.1%). Red blood cell transfusions were given to 11% of CYRAMZA-treated patients versus 8.7% of patients who received placebo.

The most common adverse reactions (all grades) observed in CYRAMZA-treated patients at a rate of $\geq 10\%$ and $\geq 2\%$ higher than placebo were hypertension and diarrhea. [Table 2](#) provides the frequency and severity of adverse reactions (CTCAE, version 4.0) in REGARD.

Table 2: Adverse Reactions Occurring in $\geq 5\%$ of Patients with a $\geq 2\%$ Difference Between Arms in REGARD

Adverse Reactions	CYRAMZA (N=236)		Placebo (N=115)	
	All Grades (%)	Grade 3-4 (%)	All Grades (%)	Grade 3-4 (%)
Vascular				
Hypertension ^a	16	8	8	3
Gastrointestinal				
Diarrhea	14	1	9	2
Nervous System				
Headache	9	0	3	0
Metabolism and Nutrition				
Hyponatremia	6	3	2	1

^a Hypertension is a consolidated term.



Clinically relevant adverse reactions reported in $\geq 1\%$ and $< 5\%$ of CYRAMZA-treated patients in REGARD were:

- Neutropenia (4.7%)
- Epistaxis (4.7%)
- Rash (4.2%)
- Intestinal obstruction (2.1%)
- Arterial thromboembolic events (1.7%)

Across clinical trials of CYRAMZA administered as a single agent, clinically relevant adverse reactions (including Grade ≥ 3) reported in CYRAMZA-treated patients included proteinuria, gastrointestinal perforation, and IRR. In REGARD, according to laboratory assessment, 8% of CYRAMZA-treated patients developed proteinuria versus 3% of placebo-treated patients. Two patients discontinued CYRAMZA due to proteinuria. The rate of gastrointestinal perforation in REGARD was 0.8% and the rate of IRR was 0.4%.

CYRAMZA Administered in Combination with Paclitaxel (RAINBOW)

Patients received paclitaxel 80 mg/m² on Days 1, 8, and 15 of each 28-day cycle with either CYRAMZA 8 mg/kg or placebo intravenously every two weeks. Patients randomized to CYRAMZA received a median of 9 doses; the median duration of exposure was 18 weeks, and 93 (28% of 327) patients received CYRAMZA for at least six months.

The most common serious adverse reactions in patients who received CYRAMZA with paclitaxel were neutropenia (3.7%) and febrile neutropenia (2.4%); 19% of patients who received CYRAMZA with paclitaxel received granulocyte colony-stimulating factors.

Adverse reactions resulting in discontinuation of any component of the CYRAMZA with paclitaxel combination in $\geq 2\%$ of patients in RAINBOW were neutropenia (4%) and thrombocytopenia (3%).

The most common adverse reactions (all grades) observed in patients who received CYRAMZA with paclitaxel at a rate of $\geq 30\%$ and $\geq 2\%$ higher than placebo with paclitaxel were fatigue/asthenia, neutropenia, diarrhea, and epistaxis. [Table 3](#) provides the frequency and severity of adverse reactions (CTCAE, version 4.0) in RAINBOW.

Table 3: Adverse Reactions Occurring in $\geq 5\%$ of Patients with a $\geq 2\%$ Difference Between Arms in RAINBOW

Adverse Reactions	CYRAMZA + Paclitaxel (N=327)		Placebo + Paclitaxel (N=329)	
	All Grades (%)	Grade ≥ 3 (%)	All Grades (%)	Grade ≥ 3 (%)
General				
Fatigue/Asthenia	57	12	44	6
Peripheral edema	25	2	14	1
Hematology				
Neutropenia ^a	54	41	31	19
Thrombocytopenia	13	2	6	2
Gastrointestinal				
Diarrhea	32	4	23	2
Stomatitis	20	1	7	1
Gastrointestinal hemorrhage events ^{a,b}	10	4	6	2
Respiratory, Thoracic, and Mediastinal				
Epistaxis	31	0	7	0
Vascular				

^a Neutropenia, gastrointestinal hemorrhage events, hypertension, proteinuria, and hypoalbuminemia are consolidated terms.

^b Includes 1 fatal event in the CYRAMZA arm.



Hypertension ^a	25	15	6	3
Renal and Urinary				
Proteinuria ^a	17	1	6	0
Metabolism and Nutrition				
Hypoalbuminemia ^a	11	1	5	1

^a Neutropenia, gastrointestinal hemorrhage events, hypertension, proteinuria, and hypoalbuminemia are consolidated terms.

^b Includes 1 fatal event in the CYRAMZA arm.

Clinically relevant adverse reactions reported in $\geq 1\%$ and $< 5\%$ of patients receiving CYRAMZA with paclitaxel were:

- Sepsis (3.1%), including 5 fatal events
- Gastrointestinal perforations (1.2%), including 1 fatal event

Non-Small Cell Lung Cancer

CYRAMZA Administered in Combination with Erlotinib (RELAY)

The safety of CYRAMZA was evaluated in RELAY [see *Clinical Studies (14.2)*]. Patients had previously untreated EGFR exon 19 deletion or exon 21 (L858R) substitution mutation-positive metastatic NSCLC. Patients had ECOG PS 0 or 1. RELAY excluded patients with bilirubin greater than the ULN, central nervous system (CNS) metastases, clinically active interstitial lung disease (ILD), uncontrolled hypertension, major surgery within 28 days, radiographic evidence of major blood vessel invasion or encasement by cancer or intra-tumor cavitation, or gross hemoptysis within the preceding 2 months. The study also excluded patients receiving chronic nonsteroidal anti-inflammatory agents (NSAIDs) or anti-platelet therapy other than once daily aspirin.

Patients received either CYRAMZA 10 mg/kg or placebo intravenously every two weeks in combination with erlotinib 150 mg taken orally once daily. Patients randomized to CYRAMZA received a median of 21 doses; the median duration of exposure was 11 months, and 90 (41% of 221) patients received CYRAMZA for at least 12 months.

The most common serious adverse reactions in patients who received CYRAMZA with erlotinib were pneumonia (3.2%), cellulitis (1.8%), and pneumothorax (1.8%). Red blood cell transfusions were given to 3.2% of CYRAMZA-treated patients versus 0 patients who received placebo.

Treatment discontinuation of all study drugs due to adverse reactions occurred in 13% of CYRAMZA with erlotinib-treated patients, with increased alanine aminotransferase (1.4%) and paronychia (1.4%) being the most common. The most common adverse reactions leading to treatment discontinuation of CYRAMZA were proteinuria (8.6%) and hyperbilirubinemia (6%).

The most common adverse reactions (all grades) observed in CYRAMZA with erlotinib-treated patients at a rate of $\geq 30\%$ of patients and $\geq 2\%$ higher than placebo with erlotinib-treated patients were infections, hypertension, stomatitis, proteinuria, alopecia, and epistaxis. The most common laboratory abnormalities $\geq 30\%$ and $\geq 2\%$ higher than the placebo were increased alanine aminotransferase, increased aspartate aminotransferase, anemia, thrombocytopenia, and neutropenia. [Table 4](#) provides the frequency and severity of adverse reactions (CTCAE, version 4.0) and [Table 5](#) provides the incidence and severity of laboratory abnormalities in RELAY.

Table 4: Adverse Reactions Occurring in $\geq 5\%$ of Patients with a $\geq 2\%$ Difference Between Arms in RELAY



Adverse Reactions	CYRAMZA + Erlotinib (N=221)		Placebo + Erlotinib (N=225)	
	All Grades (%)	Grade ≥3 (%)	All Grades (%)	Grade ≥3 (%)
Infections				
Infections ^{a,b}	81	17	76	7
Vascular				
Hypertension	45	24	12	5
Gastrointestinal				
Diarrhea	70	7	71	1
Stomatitis	42	2	36	1
Gastrointestinal hemorrhage ^c	10	1	3	<1
Gingival bleeding	9	0	1	0
Renal and Urinary				
Proteinuria ^c	34	3	8	0
Skin and Subcutaneous Tissue				
Alopecia	34	N/A ^d	20	N/A ^d
Respiratory, Thoracic, and Mediastinal				
Epistaxis	34	0	12	0
Pulmonary hemorrhage ^{c,e}	7	<1	2	<1
General				
Peripheral edema	23	<1	4	0
Nervous System				
Headache	15	<1	7	0

Abbreviations: N/A = not applicable.

^a Includes all preferred terms that are part of the System Organ Class Infections and Infestations. Most common (≥1%) Grade ≥3 infections and frequencies for CYRAMZA with erlotinib compared to placebo with erlotinib, respectively, include pneumonia (3% versus 0%), cellulitis (1% versus 0%), paronychia (4% versus 3%), skin infection (1% versus 0%), and urinary tract infection (1% versus 0%).

^b Includes 3 fatal events in the CYRAMZA arm.

^c Gastrointestinal hemorrhage, proteinuria, and pulmonary hemorrhage are consolidated terms.

^d Grade ≥3 does not exist in CTCAE.

^e Includes 1 fatal event in the CYRAMZA arm.

Table 5: Laboratory Abnormalities Worsening from Baseline in ≥20% (All Grades) of Patients Receiving CYRAMZA with Erlotinib with a Difference Between Arms of ≥2% in RELAY

Laboratory Abnormality	CYRAMZA + Erlotinib ^a		Placebo + Erlotinib ^a	
	All Grades (%)	Grade ≥3 (%)	All Grades (%)	Grade ≥3 (%)
Chemistry				
Alanine aminotransferase increased	74	11	60	13
Aspartate aminotransferase increased	71	6	47	4
Alkaline phosphatase increased	25	<1	16	1
Hypokalemia	24	5	18	2
Hematology				
Anemia	42	5	25	2
Thrombocytopenia	41	3	12	3

^a The denominator used to calculate the incidence varied based on the number of patients with a baseline and at least one on-study laboratory measurement: CYRAMZA-treated patients (range 215-218 patients) and placebo-treated patients (range 224-225 patients).

Neutropenia	33	7	21	4
-------------	----	---	----	---

^a The denominator used to calculate the incidence varied based on the number of patients with a baseline and at least one on-study laboratory measurement: CYRAMZA-treated patients (range 215-218 patients) and placebo-treated patients (range 224-225 patients).

CYRAMZA Administered in Combination with Docetaxel (REVEL)

The safety of CYRAMZA was evaluated in REVEL [see *Clinical Studies (14.2)*]. Patients had NSCLC with disease progression on or after one platinum-based therapy for locally advanced or metastatic disease and ECOG PS 0 or 1. REVEL excluded patients with bilirubin greater than the ULN, uncontrolled hypertension, major surgery within 28 days, radiographic evidence of major airway or blood vessel invasion by cancer, radiographic evidence of intra-tumor cavitation, or gross hemoptysis within the preceding 2 months, and patients receiving therapeutic anticoagulation or chronic anti-platelet therapy other than once daily aspirin.

Patients received either CYRAMZA 10 mg/kg or placebo intravenously in combination with docetaxel 75 mg/m² intravenously every 21 days. Due to an increased incidence of neutropenia and febrile neutropenia in patients enrolled in East Asian sites, REVEL was amended and 24 patients (11 patients receiving CYRAMZA with docetaxel, 13 patients receiving placebo with docetaxel) at East Asian sites received a starting dose of docetaxel at 60 mg/m² every three weeks. Patients randomized to CYRAMZA received a median of 4.5 doses; the median duration of exposure was 3.5 months, and 195 (31% of 627) patients received CYRAMZA for at least six months.

The most common serious adverse reactions in patients who received CYRAMZA with docetaxel were febrile neutropenia (14%), pneumonia (6%), and neutropenia (5%). The use of granulocyte colony-stimulating factors was 42% in CYRAMZA with docetaxel-treated patients versus 37% in patients who received placebo with docetaxel.

The most common adverse reactions leading to treatment discontinuation of CYRAMZA were IRR (0.5%) and epistaxis (0.3%). For patients with non-squamous histology, the overall incidence of pulmonary hemorrhage was 7% and the incidence of Grade ≥3 pulmonary hemorrhage was 1% for CYRAMZA with docetaxel compared to 6% overall incidence and 1% for Grade ≥3 pulmonary hemorrhage for placebo with docetaxel. For patients with squamous histology, the overall incidence of pulmonary hemorrhage was 10% and the incidence of Grade ≥3 pulmonary hemorrhage was 2% for CYRAMZA with docetaxel compared to 12% overall incidence and 2% for Grade ≥3 pulmonary hemorrhage for placebo with docetaxel. Treatment discontinuation due to adverse reactions occurred more frequently in CYRAMZA with docetaxel-treated patients (9%) than in placebo with docetaxel-treated patients (5%).

The most common adverse reactions (all grades) observed in CYRAMZA with docetaxel-treated patients at a rate of ≥30% and ≥2% higher than placebo with docetaxel were neutropenia, fatigue/asthenia, and stomatitis/mucosal inflammation. [Table 6](#) provides the frequency and severity of adverse reactions (NCI CTCAE, version 4.0) in REVEL.

Table 6: Adverse Reactions Occurring in ≥5% of Patients with a ≥2% Difference Between Arms in REVEL

Adverse Reactions	CYRAMZA + Docetaxel (N=627)		Placebo + Docetaxel (N=618)	
	All Grades (%)	Grade 3-4 (%)	All Grades (%)	Grade 3-4 (%)
Hematology				
Neutropenia ^a	55	49	46	40
Febrile neutropenia	16	16	10	10
Thrombocytopenia ^a	13	3	5	<1
General				
Fatigue/Asthenia	55	14	50	11
Peripheral edema	16	0	9	<1
Gastrointestinal				
Stomatitis/Mucosal inflammation	37	7	19	2

^a Neutropenia, thrombocytopenia, and hypertension are consolidated terms.

Respiratory, Thoracic, and Mediastinal

Epistaxis	19	<1	7	<1
Eye				
Lacrimation increased	13	<1	5	0
Vascular				
Hypertension ^a	11	6	5	2

^a Neutropenia, thrombocytopenia, and hypertension are consolidated terms.

Clinically relevant adverse drug reactions reported in $\geq 1\%$ and $< 5\%$ of CYRAMZA with docetaxel-treated patients in REVEL were:

- Hyponatremia (4.8%)
- Proteinuria (3.3%)

Colorectal Cancer

The safety of CYRAMZA was evaluated in RAISE [see *Clinical Studies (14.3)*]. Patients had mCRC with disease progression on or after therapy with bevacizumab, oxaliplatin, and a fluoropyrimidine and ECOG PS 0 or 1. RAISE excluded patients with uncontrolled hypertension, major surgery within 28 days, and those who experienced any of the following during first-line therapy with a bevacizumab-containing regimen: an arterial thrombotic/thromboembolic event; Grade 4 hypertension; Grade 3 proteinuria; a Grade 3-4 bleeding event; or bowel perforation.

Patients received either CYRAMZA 8 mg/kg or placebo intravenously in combination with FOLFIRI intravenously every two weeks. Patients randomized to CYRAMZA received a median of 8 doses (range 1-68); the median duration of exposure was 4.4 months, and 169 (32% of 529) patients received CYRAMZA for at least six months.

The most common serious adverse reactions with CYRAMZA with FOLFIRI were diarrhea (3.6%), intestinal obstruction (3.0%), and febrile neutropenia (2.8%).

Treatment discontinuation of any study drug due to adverse reactions occurred more frequently in CYRAMZA with FOLFIRI-treated patients (29%) than in placebo with FOLFIRI-treated patients (13%). The most common adverse reactions leading to discontinuation of any component of CYRAMZA with FOLFIRI as compared to placebo with FOLFIRI were neutropenia (12.5% versus 5.3%) and thrombocytopenia (4.2% versus 0.8%). The most common adverse reactions leading to treatment discontinuation of CYRAMZA were proteinuria (1.5%) and gastrointestinal perforation (1.7%).

The most common adverse reactions (all grades) observed in CYRAMZA with FOLFIRI-treated patients at a rate of $\geq 30\%$ and $\geq 2\%$ higher than placebo with FOLFIRI were diarrhea, neutropenia, decreased appetite, epistaxis, and stomatitis. Twenty percent of patients treated with CYRAMZA with FOLFIRI received granulocyte colony-stimulating factors. [Table 7](#) provides the frequency and severity of adverse reactions (CTCAE, version 4.0) in RAISE.

Table 7: Adverse Reactions Occurring in $\geq 5\%$ of Patients with a $\geq 2\%$ Difference Between Arms in RAISE

Adverse Reactions	CYRAMZA + FOLFIRI (N=529)		Placebo + FOLFIRI (N=528)	
	All Grades (%)	Grade ≥ 3 (%)	All Grades (%)	Grade ≥ 3 (%)
Gastrointestinal				
Diarrhea	60	11	51	10
Decreased appetite	37	2	27	2
Stomatitis	31	4	21	2

^a Gastrointestinal hemorrhage events, neutropenia, thrombocytopenia, hypertension, proteinuria, and hypoalbuminemia, are consolidated terms.

^b Includes 3 fatal events in the CYRAMZA arm.

^c Includes 3 patients with nephrotic syndrome in the CYRAMZA arm.



Gastrointestinal hemorrhage events ^{a,b}	12	2	7	1
Hematology				
Neutropenia ^a	59	38	46	23
Thrombocytopenia ^a	28	3	14	<1
Respiratory, Thoracic, and Mediastinal				
Epistaxis	33	0	15	0
Vascular				
Hypertension ^a	26	11	9	3
General				
Peripheral edema	20	<1	9	0
Renal and Urinary				
Proteinuria ^{a,c}	17	3	5	<1
Skin and Subcutaneous Tissue				
Palmar-plantar erythrodysesthesia syndrome	13	1	5	<1
Metabolism and Nutrition				
Hypoalbuminemia ^a	6	1	2	0

^a Gastrointestinal hemorrhage events, neutropenia, thrombocytopenia, hypertension, proteinuria, and hypoalbuminemia, are consolidated terms.

^b Includes 3 fatal events in the CYRAMZA arm.

^c Includes 3 patients with nephrotic syndrome in the CYRAMZA arm.

Clinically relevant adverse reactions reported in $\geq 1\%$ and $< 5\%$ of patients receiving CYRAMZA with FOLFIRI were:

- Gastrointestinal perforation (1.7%) including 4 fatal events

Thyroid stimulating hormone (TSH) levels were evaluated in 224 patients (115 CYRAMZA with FOLFIRI-treated patients and 109 placebo with FOLFIRI-treated patients) with normal baseline TSH levels. Patients underwent periodic TSH laboratory assessments until 30 days after the last dose of study treatment. Increased TSH levels were observed in 53 (46%) patients treated with CYRAMZA with FOLFIRI compared with 4 (4%) patients treated with placebo with FOLFIRI.

Hepatocellular Carcinoma

The safety of CYRAMZA was evaluated in REACH-2 [see *Clinical Studies* (14.4)]. Patients had Barcelona Clinic Liver Cancer (BCLC) stage B HCC who were no longer amenable to locoregional therapy, or BCLC stage C HCC, Child-Pugh score A, and baseline AFP ≥ 400 ng/mL. Patients had ECOG PS 0 or 1. REACH-2 excluded patients with clinically meaningful ascites, history of or current hepatic encephalopathy, uncontrolled hypertension, major surgery within 28 days, bilirubin > 1.5 times ULN, severe variceal bleeding in the 3 months prior to treatment or with varices at high risk of bleeding, and patients receiving therapeutic anticoagulation or chronic anti-platelet therapy other than once daily aspirin.

Patients received either CYRAMZA 8 mg/kg or placebo intravenously every two weeks. Patients received a median of 6 doses (range 1-51) of CYRAMZA; the median duration of exposure was 12 weeks (range 2-107 weeks) and 48 patients (24% of 197) received CYRAMZA for at least six months.

The most common serious adverse reactions with CYRAMZA were ascites (3%) and pneumonia (3%).

Treatment discontinuations due to adverse reactions occurred in 18% of CYRAMZA-treated patients, with proteinuria being the most frequent (2%).

The most common adverse reactions reported in $\geq 15\%$ of patients and $\geq 2\%$ higher than placebo were fatigue, peripheral edema, hypertension, abdominal pain, decreased appetite, proteinuria, nausea, and ascites. The most common laboratory abnormalities $\geq 30\%$ and $\geq 2\%$ higher than placebo were thrombocytopenia, hypoalbuminemia, and hyponatremia. [Table 8](#) provides the frequency and severity of adverse reactions (CTCAE, version 4.0) and [Table 9](#) provides the incidence and severity of laboratory abnormalities in REAC



Table 8: Adverse Reactions Occurring in ≥10% of Patients with a ≥2% Difference Between Arms in REACH-2

Adverse Reactions	CYRAMZA (N=197)		Placebo (N=95)	
	All Grades (%)	Grade ≥ 3 (%)	All Grades (%)	Grade ≥ 3 (%)
General				
Fatigue ^a	36	5	20	3
Peripheral edema	25	2	14	0
Decreased appetite	23	2	20	1
Insomnia	11	0	6	1
Pyrexia	10	0	3	0
Vascular				
Hypertension ^a	25	13	13	5
Gastrointestinal				
Abdominal Pain ^a	25	2	16	2
Nausea	19	0	12	0
Ascites ^b	18	4	7	1
Vomiting	10	0	7	0
Renal and Urinary				
Proteinuria ^{a,c}	20	2	4	0
Nervous System				
Headache	14	0	5	1
Respiratory, Thoracic, and Mediastinal				
Epistaxis	14	<1	3	0
Musculoskeletal				
Back Pain	10	<1	7	1

^a Fatigue, hypertension, abdominal pain, and proteinuria are consolidated terms.

^b Includes 1 fatal event in the CYRAMZA arm.

^c Includes 1 patient with nephrotic syndrome in the CYRAMZA arm.

Clinically relevant adverse drug reactions reported in ≥1% and <10% of CYRAMZA-treated patients in REACH-2 were:

- IRR (9%)
- Hepatic encephalopathy (5%) including 1 fatal event
- Hepatorenal syndrome (2%) including 1 fatal event

Table 9: Laboratory Abnormalities Worsening from Baseline in ≥15% (All Grades) of Patients Receiving CYRAMZA with a Difference Between Arms of ≥2% in REACH-2

Laboratory Abnormality ^a	CYRAMZA ^b		Placebo ^b	
	All Grades (%)	Grade ≥ 3 (%)	All Grades (%)	Grade ≥ 3 (%)
Hematology				
Thrombocytopenia	46	8	15	1
Neutropenia	24	8	12	3
Chemistry				
Hypoalbuminemia	33	<1	16	0

^a Laboratory abnormalities were not included if the ≥ Grade 3 percentage was less than placebo-treated patients.

^b The denominator used to calculate the incidence varied based on the number of patients with a baseline and at least one on study laboratory measurement: CYRAMZA-treated patients (range 179-193 patients) and placebo-treated patients (range 84-92 patients).

Hyponatremia	32	16	25	5
Hypocalcemia	16	2	5	0

^a Laboratory abnormalities were not included if the \geq Grade 3 percentage was less than placebo-treated patients.

^b The denominator used to calculate the incidence varied based on the number of patients with a baseline and at least one on study laboratory measurement: CYRAMZA-treated patients (range 179-193 patients) and placebo-treated patients (range 84-92 patients).

6.2 Immunogenicity

As with all therapeutic proteins, there is the potential for immunogenicity. The detection of antibody formation is highly dependent on the sensitivity and specificity of the assay. Additionally, the observed incidence of antibody (including neutralizing antibody) positivity in an assay may be influenced by several factors including assay methodology, sample handling, timing of sample collection, concomitant medications, and underlying disease. For these reasons, comparison of incidence of antibodies to CYRAMZA with the incidences of antibodies to other products may be misleading.

In clinical trials, 86/2890 (3%) of CYRAMZA-treated patients tested positive for treatment-emergent anti-ramucirumab antibodies by an enzyme-linked immunosorbent assay (ELISA). Neutralizing antibodies were detected in 14 of the 86 patients who tested positive for treatment-emergent anti-ramucirumab antibodies.

6.3 Postmarketing Experience

The following adverse reactions have been identified during post-approval use of CYRAMZA. Because such reactions are reported voluntarily from a population of uncertain size, it is not always possible to reliably estimate their frequency or establish a causal relationship to drug exposure.

- *Blood and lymphatic system*: Thrombotic microangiopathy
- *Neoplasms benign, malignant and unspecified*: Hemangioma
- *Respiratory, thoracic, and mediastinal*: Dysphonia
- *Vascular*: Arterial (including aortic) aneurysms, dissections, and rupture
- *Cardiac*: Heart failure

[Hide](#)

8 USE IN SPECIFIC POPULATIONS

8.1 Pregnancy

Risk Summary

Based on its mechanism of action [see *Clinical Pharmacology (12.1)*], CYRAMZA can cause fetal harm when administered to a pregnant woman. There are no available data on CYRAMZA use in pregnant women. Animal models link angiogenesis, VEGF and VEGFR2 to critical aspects of female reproduction, embryo-fetal development, and postnatal development. No animal studies have been conducted to evaluate the effect of ramucirumab on reproduction and fetal development. Advise a pregnant woman of the potential risk to a fetus.

In the U.S. general population, the estimated background risk of major birth defects and miscarriage in clinically recognized pregnancies is 2-4% and 15-20%, respectively.

Data

Animal Data

No animal studies have been specifically conducted to evaluate the effect of ramucirumab on reproduction and fetal development. In mice, loss of the VEGFR2 gene resulted in embryo-fetal death and these fetuses lacked organized blood vessels and blood islands in the yolk sac. In other models, VEGFR2 signaling was associated with development and maintenance of endometrial and placental vascular function, successful blastocyst implantation, maternal and feto-placental vascular differentiation, and development during early pregnancy in rodents and non-human primates. Disruption of VEGF signaling has also been associated with developmental anomalies including poor development of the cranial region, forelimbs, forebrain, heart, and blood vessels.

8.2 Lactation



Risk Summary

There is no information on the presence of ramucirumab in human milk or its effects on the breastfed child or on milk production. Human IgG is present in human milk, but published data suggest that breast milk antibodies do not enter the neonatal and infant circulation in substantial amounts. Because of the potential risk for serious adverse reactions in breastfed children from ramucirumab, advise women not to breastfeed during treatment with CYRAMZA and for 2 months after the last dose.

8.3 Females and Males of Reproductive Potential

Pregnancy Testing

Verify the pregnancy status of females of reproductive potential prior to initiating CYRAMZA [see *Use in Specific Populations* (8.1)].

Contraception

Based on its mechanism of action, CYRAMZA can cause fetal harm when administered to a pregnant woman [see *Use in Specific Populations* (8.1)].

Females

Advise females of reproductive potential to use effective contraception during treatment with CYRAMZA and for 3 months after the last dose.

Infertility

Females

Advise females of reproductive potential that based on animal data CYRAMZA may impair fertility [see *Nonclinical Toxicology* (13.1)].

8.4 Pediatric Use

The safety and effectiveness of CYRAMZA in pediatric patients have not been established.

The safety and effectiveness of CYRAMZA as a single agent were assessed but not established in a single-arm, multicenter, open-label study [NCT02564198] that included 23 pediatric patients aged 1 year to 16 years with relapsed or refractory solid tumors. The effect on open tibial growth plates in pediatric patients who received CYRAMZA has not been adequately studied; however, one patient in this study had progressive widening of distal femoral growth plate. No other new safety signals were observed in pediatric patients. The pharmacokinetics (PK) for these pediatric patients was within the range of the values previously observed in adults given the same dose per body weight.

Juvenile Animal Toxicity Data

In animal studies, effects on epiphyseal growth plates were identified. In cynomolgus monkeys, anatomical pathology revealed adverse effects on the epiphyseal growth plate (thickening and osteochondropathy) at all doses tested (5-50 mg/kg). Ramucirumab exposure at the lowest weekly dose tested in the cynomolgus monkey was 0.2 times the exposure in humans at the recommended dose of ramucirumab as a single agent.

8.5 Geriatric Use

Of the 563 CYRAMZA-treated patients in REGARD and RAINBOW, 205 (36%) were 65 and over, while 41 (7%) were 75 and over. No overall differences in safety or effectiveness were observed between these subjects and younger subjects.

Of the 221 patients who received CYRAMZA with erlotinib in RELAY, 119 (54%) were 65 and over, while 29 (13%) were 75 and over. Overall, no clinically meaningful differences in effectiveness were observed between these patients and younger patients. Adverse reactions occurring at a 10% or higher incidence in patients receiving CYRAMZA with erlotinib and with a 10% or greater difference between patients aged 65 or older compared to patients aged less than 65 years were: diarrhea (75% versus 65%), hypertension (50% versus 40%), increased ALT (49% versus 35%), increased AST (49% versus 33%), stomatitis (46% versus 36%), decreased appetite (32% versus 19%), dysgeusia (23% versus 12%), and weight loss (19% versus 6%).



Of the 1253 patients in REVEL, 455 (36%) were 65 and over and 84 (7%) were 75 and over. Of the 627 patients who received CYRAMZA with docetaxel in REVEL, 237 (38%) were 65 and over, while 45 (7%) were 75 and over. In an exploratory subgroup analysis of REVEL, the hazard ratio for overall survival in patients less than 65 years old was 0.74 (95% CI: 0.62, 0.87) and in patients 65 years and over was 1.10 (95% CI: 0.89, 1.36).

Of the 529 patients who received CYRAMZA with FOLFIRI in RAISE, 209 (40%) were 65 and over, while 51 (10%) were 75 and over. Overall, no differences in safety or effectiveness were observed between these subjects and younger subjects.

Of the 197 patients who received CYRAMZA in REACH-2, 95 (48%) were 65 years and over, while 37 (19%) were 75 years and over. Overall, no differences in efficacy were observed between these subjects and younger subjects.

8.6 Hepatic Impairment

No dose adjustment is recommended for patients with mild (total bilirubin within ULN and aspartate aminotransferase [AST] >ULN or total bilirubin >1 to 1.5 times ULN and any AST) or moderate (total bilirubin >1.5 to 3 times ULN and any AST) hepatic impairment. Clinical deterioration was reported in patients with Child-Pugh B or C cirrhosis who received single agent CYRAMZA [see *Warnings and Precautions* (5.7), *Clinical Pharmacology* (12.3)].

[Hide](#)

11 DESCRIPTION

Ramucirumab is a human VEGFR2 antagonist. It is a recombinant human IgG1 monoclonal antibody. Ramucirumab has an approximate molecular weight of 147 kDa. Ramucirumab is produced in genetically engineered mammalian NS0 cells.

CYRAMZA (ramucirumab) injection for intravenous use is a sterile, preservative-free, clear to slightly opalescent and colorless to slightly yellow solution. CYRAMZA is supplied at a concentration of 10 mg/mL in either 100 mg (10 mL) or 500 mg (50 mL) single-dose vials. CYRAMZA is formulated in glycine (9.98 mg/mL), histidine (0.65 mg/mL), histidine monohydrochloride (1.22 mg/mL), polysorbate 80 (0.1 mg/mL), sodium chloride (4.383 mg/mL), and Water for Injection, USP, pH 6.0.

[Hide](#)

12 CLINICAL PHARMACOLOGY

12.1 Mechanism of Action

Ramucirumab is a VEGFR2 antagonist that specifically binds VEGFR2 and blocks binding of VEGFR ligands, VEGF-A, VEGF-C, and VEGF-D. As a result, ramucirumab inhibits ligand-stimulated activation of VEGFR2, thereby inhibiting ligand-induced proliferation, and migration of human endothelial cells. Ramucirumab inhibited angiogenesis in an in vivo animal model.

12.3 Pharmacokinetics

The pharmacokinetics (PK) of ramucirumab were studied in patients with various cancers over a dose range of 6-12 mg/kg administered every two or three weeks. The PK characteristics of ramucirumab are similar for patients across cancer types based on a population PK analysis. Ramucirumab systemic exposure increased dose proportionally at doses of 8 mg/kg and above and steady state concentrations were achieved at approximately 12 weeks.

Distribution

The mean (% coefficient of variation [CV%]) volume of distribution of ramucirumab at steady-state (V_{ss}) was 5.4 L (15%).

Elimination

The mean (CV%) clearance of ramucirumab was 0.015 L/hour (30%) and the mean elimination half-life was days (20%).



Specific Populations

Age (19-88 years), sex (68% male), race (70% White, 24% Asian), renal impairment (creatinine clearance [CLcr] calculated by Cockcroft-Gault, 15-89 mL/min, mild hepatic impairment (total bilirubin within ULN and AST>ULN or total bilirubin >1 to 1.5 times ULN and any AST), or moderate hepatic impairment (total bilirubin >1.5 to 3 times ULN) had no clinically meaningful effect on the PK of ramucirumab. The effect of severe hepatic impairment (total bilirubin >3 times ULN and any AST) on the PK of ramucirumab is unknown.

Drug Interaction Studies

No clinically meaningful changes in the exposure of either ramucirumab or its concomitant drugs in the approved combinations, including paclitaxel, docetaxel, irinotecan (or its active metabolite, SN-38), and erlotinib were observed in patients with solid tumors.

[Hide](#)

13 NONCLINICAL TOXICOLOGY

13.1 Carcinogenesis, Mutagenesis, Impairment of Fertility

No animal studies have been performed to test ramucirumab for potential carcinogenicity or genotoxicity.

Inhibition of VEGFR2 signaling in animal models was shown to result in changes to hormone levels critical for pregnancy, and, in monkeys, an increased duration of the follicular cycle. In a 39 week animal study, female monkeys treated with ramucirumab showed dose dependent increases in follicular mineralization of the ovary.

13.2 Animal Toxicology and/or Pharmacology

Adverse effects in the kidney (glomerulonephritis) occurred in monkeys at doses of 16-50 mg/kg (0.7-5.5 times the exposure in humans at the recommended dose of ramucirumab as a single agent).

A single dose of ramucirumab resulting in an exposure approximately 10 times the human exposure at the recommended dose of ramucirumab as a single agent did not significantly impair wound healing in monkeys using a full-thickness incisional model.

[Hide](#)

14 CLINICAL STUDIES

14.1 Gastric Cancer

REGARD

The efficacy of CYRAMZA was evaluated in REGARD (NCT00917384), a multinational, randomized, double-blind, multicenter study in patients with locally advanced or metastatic gastric cancer (including adenocarcinoma of the GEJ) who previously received platinum- or fluoropyrimidine-containing chemotherapy. Patients were required to have experienced disease progression either within 4 months after the last dose of first-line therapy for locally advanced or metastatic disease or within 6 months after the last dose of adjuvant therapy. Patients were also required to have ECOG PS of 0 or 1. Patients were randomized (2:1) to receive either an intravenous infusion of CYRAMZA 8 mg/kg or placebo every 2 weeks. Randomization was stratified by weight loss over the prior 3 months ($\geq 10\%$ versus $< 10\%$), geographic region, and location of the primary tumor (gastric versus GEJ). The major efficacy outcome measure was overall survival (OS). An additional efficacy outcome measure was progression-free survival (PFS).

A total of 355 patients were randomized, 238 to the CYRAMZA-treatment group and 117 to the placebo-treatment group. Baseline demographic and disease characteristics were similar between treatment arms. The median age was 60 years (range 24-87); 70% were men; 77% were White, 16% Asian; 28% had ECOG PS 0 and 72% had ECOG PS 1; 91% had measurable disease; 75% had gastric cancer; and 25% had adenocarcinoma of the GEJ. The majority of patients (85%) experienced disease progression during or following first-line therapy for metastatic disease. Prior chemotherapy for gastric cancer consisted of platinum/fluoropyrimidine combination therapy (81%), fluoropyrimidine-containing regimens without platinum (15%), and platinum-containing regimens without fluoropyrimidine (4%). Patients received a median of 4 doses (range 1-34) of CYRAMZA or a median of 3 doses (range 1-30) of placebo.



Efficacy results are shown in [Table 10](#) and [Figure 1](#).

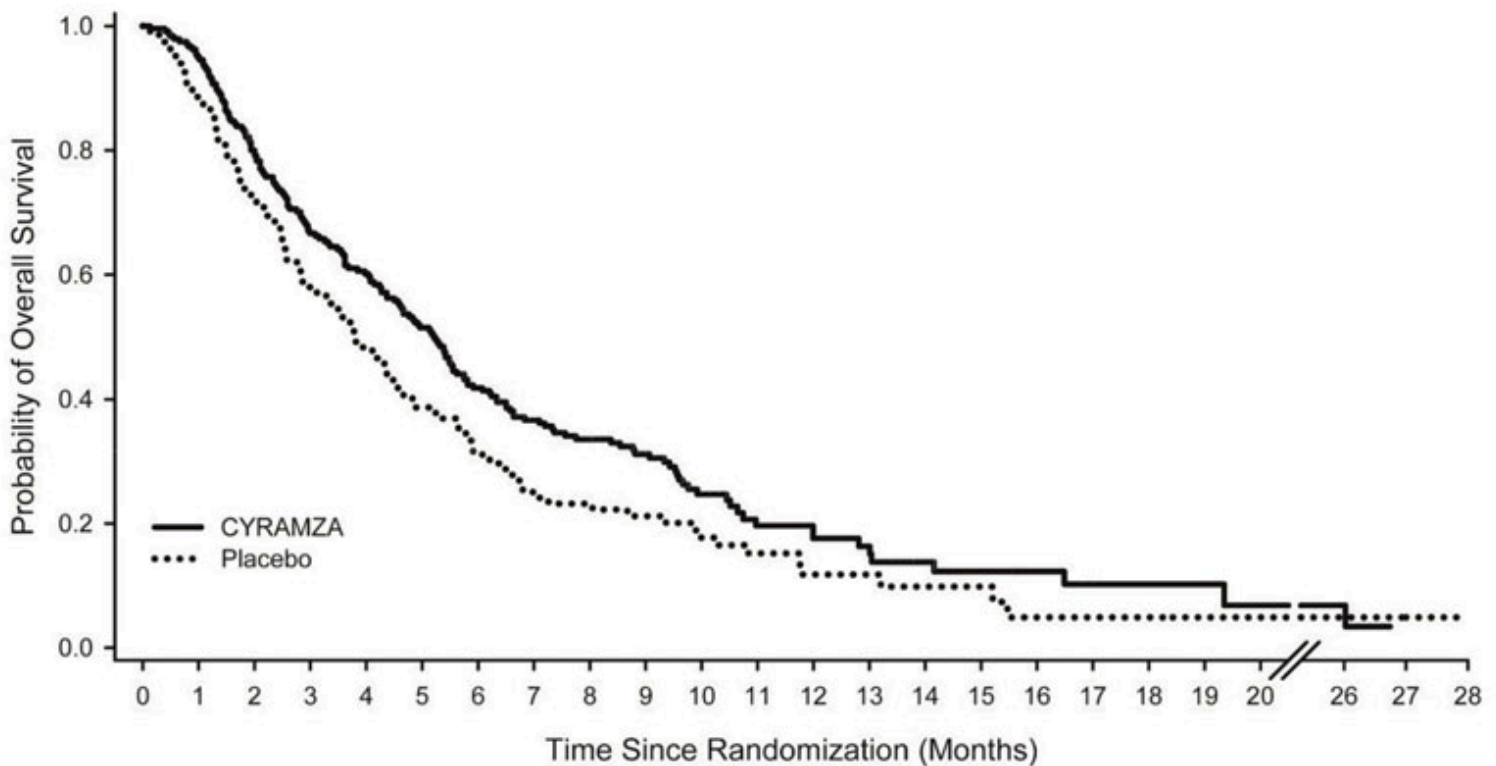
Table 10: Efficacy Results in REGARD

	CYRAMZA + BSC N=238	Placebo + BSC N=117
Overall Survival		
Number of deaths (%)	179 (75%)	99 (85%)
Median – months (95% CI)	5.2 (4.4, 5.7)	3.8 (2.8, 4.7)
Hazard Ratio (95% CI)	0.78 (0.60, 0.998)	
Stratified Log-rank p-value	0.047	
Progression-free Survival		
Number of events (%) ^a	199 (84%)	108 (92%)
Median – months (95% CI)	2.1 (1.5, 2.7)	1.3 (1.3, 1.4)
Hazard Ratio (95% CI)	0.48 (0.38, 0.62)	
Stratified Log-rank p-value	<0.001	

Abbreviations: BSC = best supportive care; CI = confidence interval

^a 65 of 199 events in CYRAMZA-treated patients and 31 of 108 events in placebo-treated patients were deaths.

Figure 1: Kaplan-Meier Curves for Overall Survival in REGARD



Number at Risk

CYRAMZA	238	154	92	49	17	7	3	0	0
Placebo	117	66	34	20	7	4	2	1	0

RAINBOW

The efficacy of CYRAMZA was evaluated in RAINBOW (NCT01170663), a multinational, randomized, double-blind study in patients with locally advanced or metastatic gastric cancer (including adenocarcinoma of the GEJ) who previously received platinum- and fluoropyrimidine-containing chemotherapy. Patients were required to have experienced disease progression during, or within 4 months after the last dose of first-line therapy. Patients were also required to have ECOG PS of 0 or 1. Patients were randomized (1:1) to receive either CYRAMZA 8 mg/kg or placebo as an intravenous infusion every 2 weeks (on Days 1 and 15) of each 28-day cycle.

cycle. Patients in both arms received paclitaxel 80 mg/m² by intravenous infusion on Days 1, 8, and 15 of each 28-day cycle. Prior to administration of each dose of paclitaxel, patients were required to have adequate hematopoietic and hepatic function. The paclitaxel dose was permanently reduced, in increments of 10 mg/m², for a maximum of two dose reductions for Grade 4 hematologic toxicity or Grade 3 paclitaxel-related non-hematologic toxicity. Randomization was stratified by geographic region, time to progression from the start of first-line therapy (<6 months versus ≥6 months), and disease measurability. The major efficacy outcome measure was OS. Additional efficacy outcome measures were PFS and overall response rate (ORR).

A total of 665 patients were randomized, 330 to the CYRAMZA-treatment group and 335 to the placebo-treatment group. Baseline demographics and disease characteristics were similar between treatment arms. The median age was 61 years (range: 24-84); 71% were men; 61% were White, 35% Asian; 39% had ECOG PS 0 and 61% had ECOG PS 1; 78% had measurable disease; 79% had gastric cancer; and 21% had adenocarcinoma of the GEJ. Two-thirds of the patients experienced disease progression while on first-line therapy (67%) and 25% of patients received an anthracycline in combination with platinum/fluoropyrimidine combination therapy.

Efficacy results are shown in [Table 11](#) and [Figure 2](#).

Table 11: Efficacy Results in RAINBOW

	CYRAMZA + Paclitaxel N=330	Placebo + Paclitaxel N=335
Overall Survival		
Number of deaths (%)	256 (78%)	260 (78%)
Median – months (95% CI)	9.6 (8.5, 10.8)	7.4 (6.3, 8.4)
Hazard Ratio (95% CI)	0.81 (0.68, 0.96)	
Stratified Log-rank p-value	0.017	
Progression-free Survival		
Number of events (%) ^a	279 (85%)	296 (88%)
Median – months (95% CI)	4.4 (4.2, 5.3)	2.9 (2.8, 3.0)
Hazard Ratio (95% CI)	0.64 (0.54, 0.75)	
Stratified Log-rank p-value	<0.001	
Overall Response Rate^b		
Rate – percent (95% CI)	28% (23, 33)	16% (13, 20)
Stratified CMH p-value	<0.001	

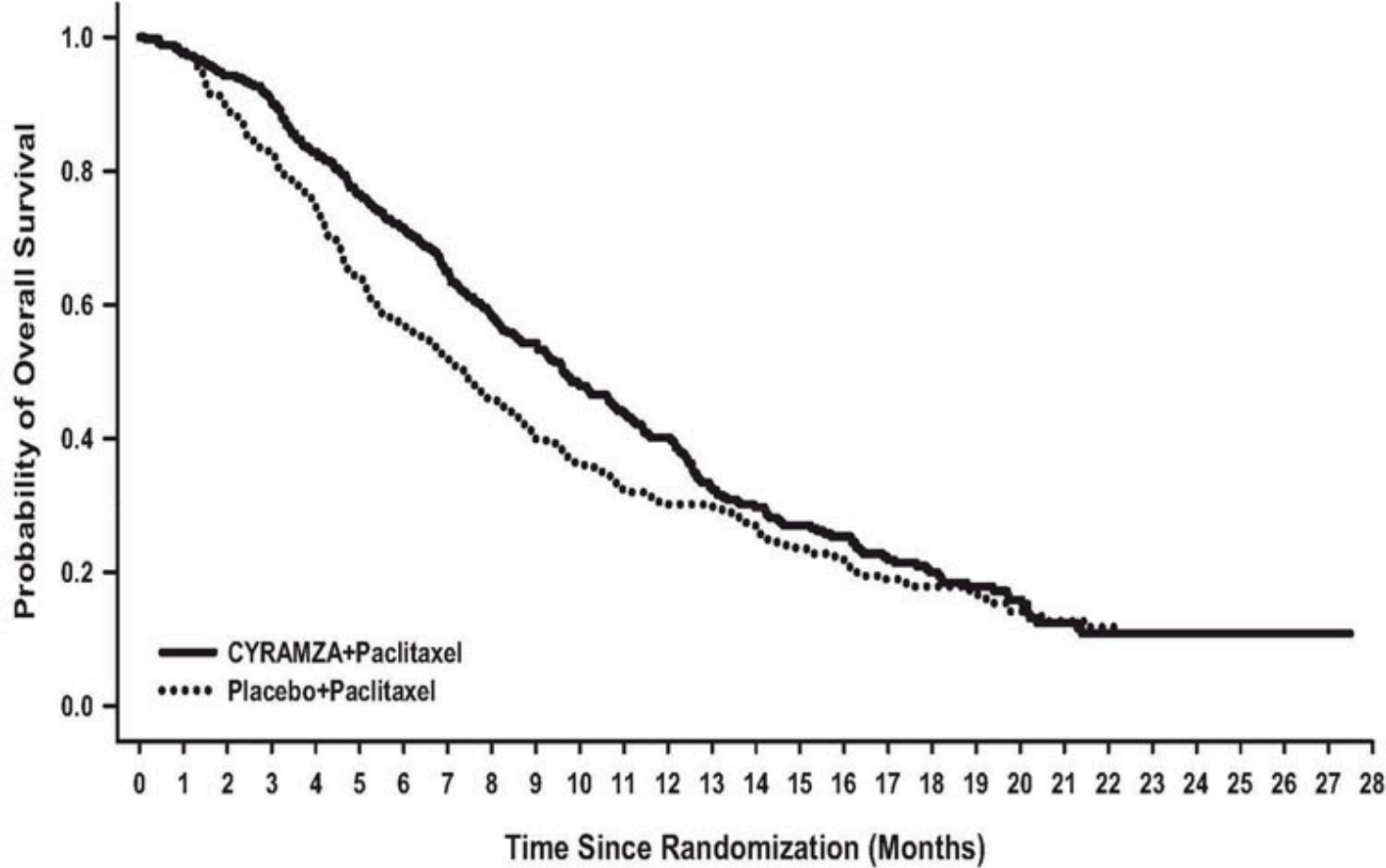
Abbreviations: CI = confidence interval, CMH = Cochran-Mantel-Haenszel

^a 56 of 279 events in CYRAMZA-treated patients and 55 of 296 events in placebo-treated patients were deaths.

^b 2 complete responses in CYRAMZA-treated patients and 1 complete response in placebo-treated patients.

Figure 2: Kaplan-Meier Curves for Overall Survival in RAINBOW





Number at Risk

CYRAMZA+Paclitaxel	330	308	267	228	185	148	116	78	60	41	24	13	6	1	0
Placebo+Paclitaxel	335	294	241	180	143	109	81	64	47	30	22	13	5	2	0

14.2 Non-Small Cell Lung Cancer

RELAY

The efficacy of CYRAMZA in combination with erlotinib was evaluated in RELAY (NCT02411448), a multinational, randomized, double-blind, placebo-controlled, multicenter study in patients with previously untreated metastatic non-small cell lung cancer (NSCLC) whose tumors have epidermal growth factor receptor (EGFR) exon 19 deletion or exon 21 (L858R) substitution mutations. Patients in RELAY were required to have measurable disease, ECOG PS of 0 or 1, no central nervous system (CNS) metastases, and no known EGFR T790M mutations at baseline. Patients were randomized (1:1) to receive either CYRAMZA 10 mg/kg or placebo every 2 weeks as an intravenous infusion, in combination with erlotinib 150 mg orally once daily until disease progression or unacceptable toxicity. Randomization was stratified by geographic region (East Asia versus other), gender, EGFR mutation (exon 19 deletion versus exon 21 [L858R] substitution mutation), and local EGFR testing method (*therascreen*[®] and *cobas*[®] versus other polymerase chain reaction [PCR] and sequencing-based methods). The major efficacy outcome measure was PFS as assessed by the investigator (RECIST v1.1). Additional efficacy outcome measures included OS, ORR, and duration of response (DoR).

A total of 449 patients were randomized, 224 to the CYRAMZA-treatment group and 225 to the placebo-treatment group. Baseline demographics and disease characteristics were similar between treatment arms. The median age was 65 years (range 23-89); 63% of patients were female; 77% were Asian and 22% were White; 52% had ECOG PS 0; 61% were never smokers; 54% had exon 19 mutation deletions, and 45% had exon 21 (L858R) substitution mutations.

Efficacy results are shown in [Table 12](#) and [Figure 3](#).

Table 12: Efficacy Results in RELAY

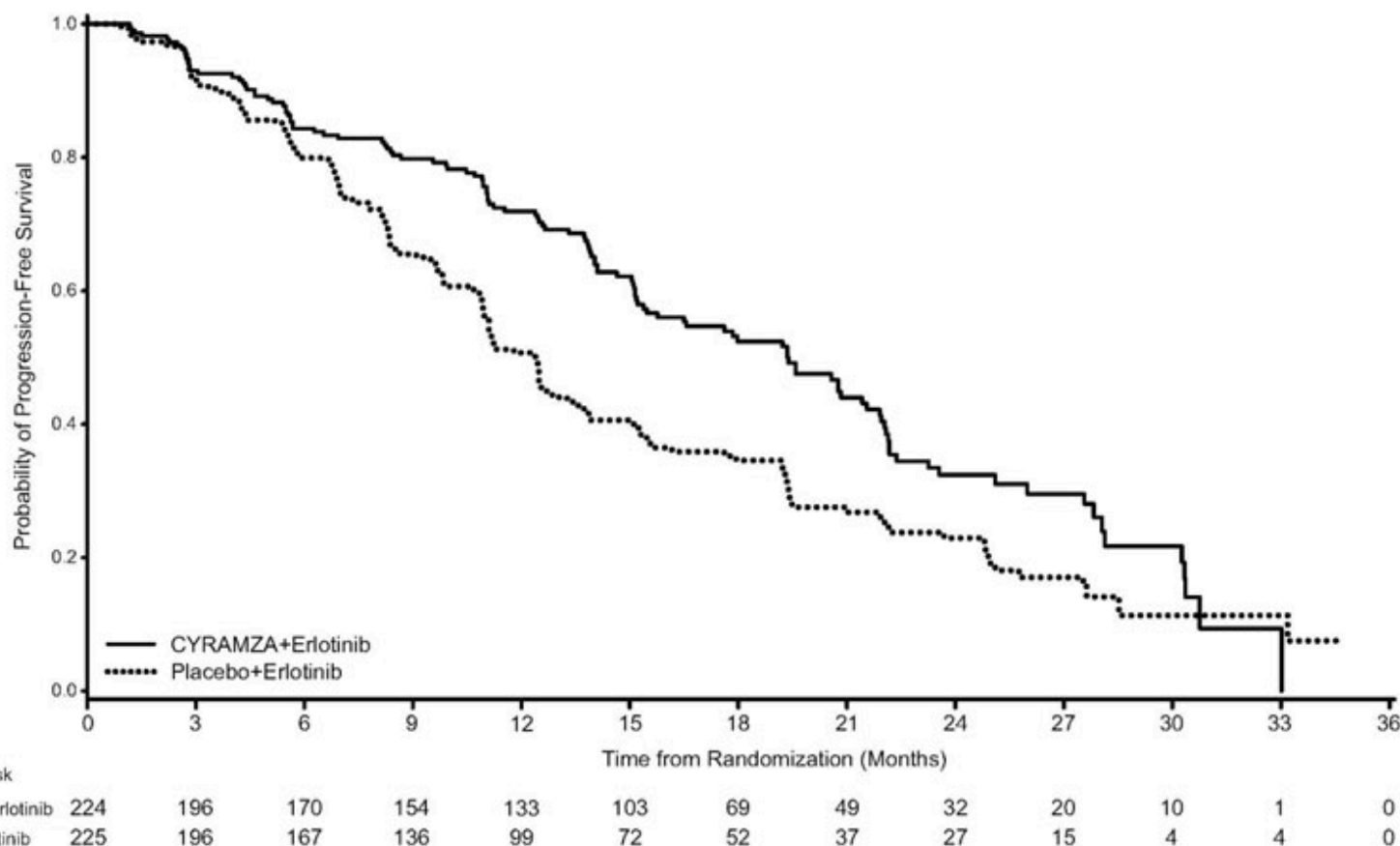


	CYRAMZA + Erlotinib N=224	Placebo + Erlotinib N=225
Progression-free Survival		
Number of events (%) ^a	122 (55%)	158 (70%)
Median – months (95% CI)	19.4 (15.4, 21.6)	12.4 (11.0, 13.5)
Hazard Ratio (95% CI)	0.59 (0.46, 0.76)	
Stratified Log-rank p-value	<0.0001	

Abbreviations: ITT = Intent-to-treat patients, CI = confidence interval, NR = not reached

^a 4 of 122 events in CYRAMZA-treated patients and 1 of 158 events in placebo-treated patients were deaths.

Figure 3: Kaplan-Meier Curves for Progression-Free Survival by Investigator Assessment in RELAY



PFS assessment based on a blinded independent radiologic review was similar to the investigator assessment. The treatment effect for PFS was consistent across pre-specified stratification factors. The ORR was 76% (95% CI: 71, 82) in the CYRAMZA in combination with erlotinib arm and 75% (95% CI: 69, 80) in the placebo in combination with erlotinib arm, with median DoR 18.0 months (95% CI: 13.9, 19.8) and 11.1 months (95% CI: 9.7, 12.3), in each arm respectively.

Based on the prespecified final OS analysis conducted after 297 events, the stratified OS HR was 0.98 (95% CI: 0.78 - 1.24), with median OS of 51.1 months (95% CI: 44.8 - 57.3) in the CYRAMZA in combination with erlotinib arm and 46.0 months (95% CI: 43.6 - 53.0) in the placebo in combination with erlotinib arm.

REVEL

The efficacy of CYRAMZA was evaluated in REVEL (NCT01168973), a multinational, randomized, double-blind study in patients with NSCLC with disease progression on or after one platinum-based therapy for locally advanced or metastatic disease. Patients in REVEL were also required to have ECOG PS 0 or 1. Patients were randomized (1:1) to receive either CYRAMZA at 10 mg/kg or placebo by intravenous infusion, in combination with docetaxel at 75 mg/m², every 21 days. Sites in East Asia administered a reduced dose of docetaxel at 60 mg/m² every 21 days. Patients who discontinued combination therapy because of an adverse reaction attributed to either CYRAMZA/placebo or docetaxel were permitted to continue monotherapy with

other treatment component until disease progression or intolerable toxicity. Randomization was stratified by geographic region, sex, prior maintenance therapy, and ECOG PS. The major efficacy outcome measure was OS. Additional efficacy outcome measures included PFS and ORR.

A total of 1253 patients were randomized, 628 to the CYRAMZA-treatment group and 625 to the placebo-treatment group. Baseline demographics and disease characteristics were similar between treatment arms. The median age was 62 years (range 21-86); 67% were men; 82% were White and 13% were Asian; 32% had ECOG PS 0; 73% had nonsquamous histology and 26% had squamous histology. In addition to platinum chemotherapy (99%), the most common prior therapies were pemetrexed (38%), gemcitabine (25%), taxane (24%), and bevacizumab (14%). Twenty-two percent of patients received prior maintenance therapy. Tumor EGFR status was unknown for the majority of patients (65%). Where tumor EGFR status was known (n=445), 7.4% were positive for EGFR mutation (n=33). No data were collected regarding tumor ALK rearrangement status.

Overall response rate (complete response + partial response) was 23% (95% CI: 20, 26) for CYRAMZA with docetaxel and 14% (95% CI: 11, 17) for placebo with docetaxel, p-value of <0.001. Efficacy results are shown in [Table 13](#) and [Figure 4](#).

Table 13: Efficacy Results in REVEL

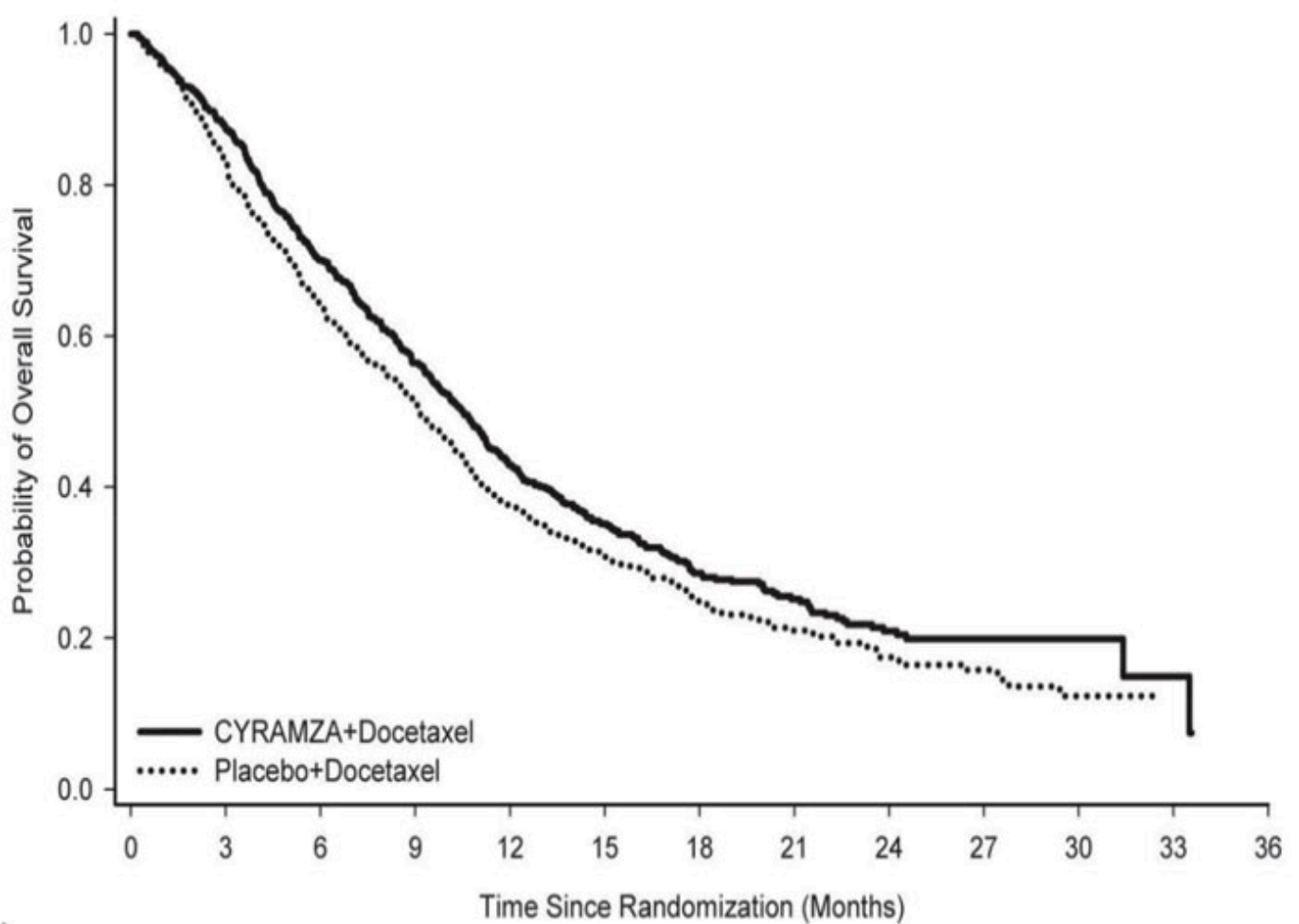
	CYRAMZA + Docetaxel N=628	Placebo + Docetaxel N=625
Overall Survival		
Number of deaths (%)	428 (68%)	456 (73%)
Median – months (95% CI)	10.5 (9.5, 11.2)	9.1 (8.4, 10.0)
Hazard Ratio (95% CI)	0.86 (0.75, 0.98)	
Stratified Log-rank p-value	0.024	
Progression-free Survival		
Number of events (%) ^a	558 (89%)	583 (93%)
Median – months (95% CI)	4.5 (4.2, 5.4)	3.0 (2.8, 3.9)
Hazard Ratio (95% CI)	0.76 (0.68, 0.86)	
Stratified Log-rank p-value	<0.001	

Abbreviations: CI = confidence interval

^a 126 of 558 events in CYRAMZA-treated patients and 109 of 583 events in placebo-treated patients were deaths.

Figure 4: Kaplan-Meier Curves for Overall Survival in REVEL





Number at Risk	Time Since Randomization (Months)												
	0	3	6	9	12	15	18	21	24	27	30	33	36
CYRAMZA+Docetaxel	628	527	415	329	231	156	103	70	45	23	11	2	0
Placebo+Docetaxel	625	501	386	306	197	129	86	56	36	23	9	0	0

14.3 Colorectal Cancer

The efficacy of CYRAMZA was evaluated in RAISE (NCT01183780), a multinational, randomized, double-blind study in patients with mCRC, who had disease progression on or after prior therapy with bevacizumab, oxaliplatin, and a fluoropyrimidine. Patients in RAISE were required to have ECOG PS 0 or 1 and to have disease progression within 6 months of the last dose of first-line therapy. Patients were randomized (1:1) to receive either CYRAMZA at 8 mg/kg as an intravenous infusion or placebo, in combination with FOLFIRI: irinotecan 180 mg/m² administered intravenously over 90 minutes and folinic acid 400 mg/m² administered intravenously simultaneously over 120 minutes; followed by fluorouracil 400 mg/m² intravenous bolus over 2 to 4 minutes; followed by fluorouracil 2400 mg/m² administered intravenously by continuous infusion over 46 to 48 hours. Treatment cycles on both arms were repeated every 2 weeks. Patients who discontinued one or more components of treatment because of an adverse reaction were permitted to continue therapy with the other treatment component(s) until disease progression or unacceptable toxicity. Randomization was stratified by geographic region, tumor KRAS status, and time to disease progression after beginning first-line treatment (<6 months versus ≥6 months). The major efficacy outcome measure was OS. An additional efficacy outcome measure was PFS.

A total of 1072 patients were randomized, 536 to the CYRAMZA-treatment group and 536 to the placebo-treatment group. Baseline demographics and disease characteristics were similar between treatment arms. The median age was 62 years (range 21-87); 57% were men; 76% were White and 20% were Asian; 49% had ECOG PS 0; 49% had KRAS mutant tumors; and 24% had <6 months from time to disease progression after beginning first-line treatment. The treatment effect was consistent across the pre-specified stratification factors.

Efficacy results are shown in [Table 14](#) and [Figure 5](#).

Table 14: Efficacy Results in RAISE

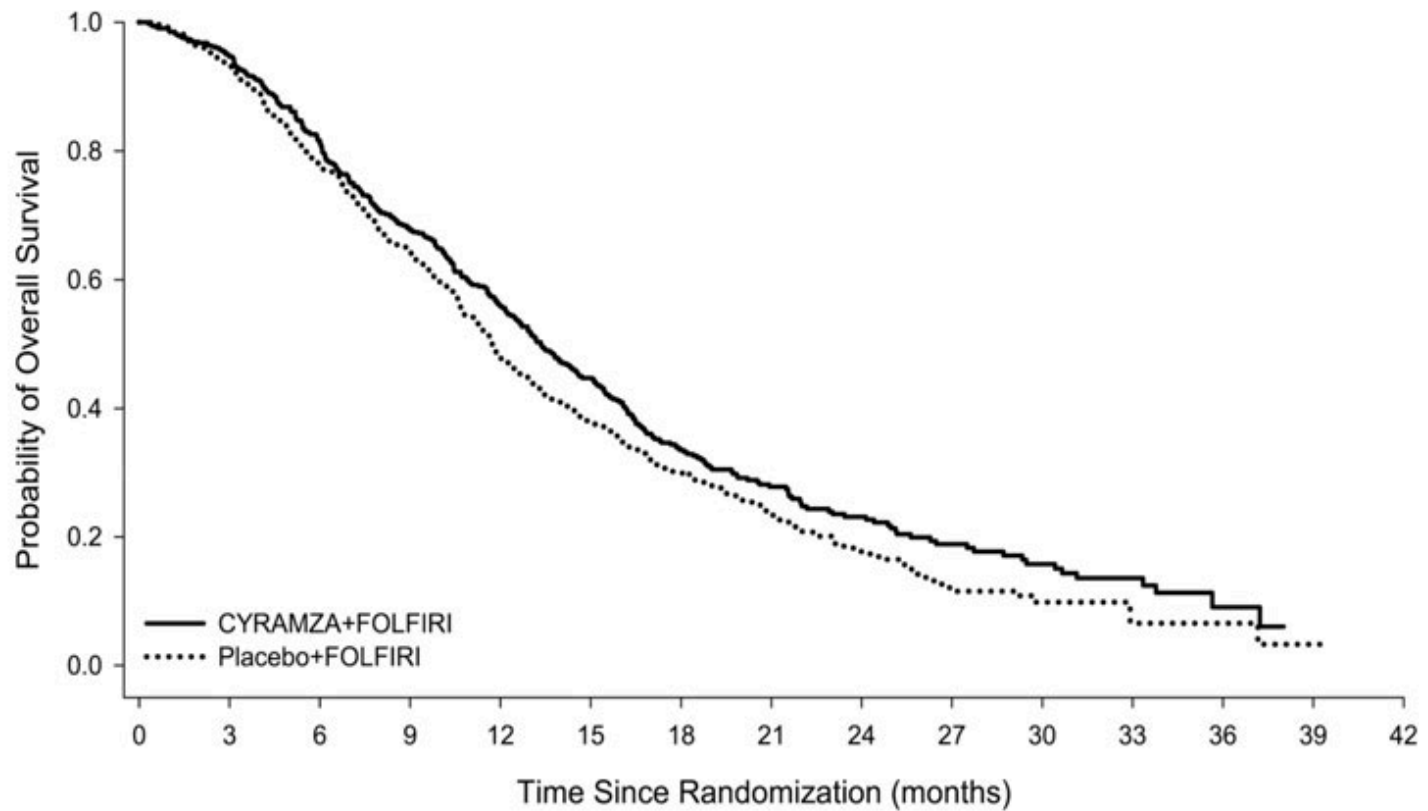


	CYRAMZA + FOLFIRI N=536	Placebo + FOLFIRI N=536
Overall Survival		
Number of deaths (%)	372 (69%)	397 (74%)
Median – months (95% CI)	13.3 (12.4, 14.5)	11.7 (10.8, 12.7)
Hazard Ratio (95% CI)	0.85 (0.73, 0.98)	
Stratified Log-rank p-value	0.023	
Progression-free Survival		
Number of events (%) ^a	476 (89%)	494 (92%)
Median – months (95% CI)	5.7 (5.5, 6.2)	4.5 (4.2, 5.4)
Hazard Ratio (95% CI)	0.79 (0.70, 0.90)	
Stratified Log-rank p-value	<0.001	

Abbreviations: CI = confidence interval.

^a 73 of 476 events in CYRAMZA-treated patients and 64 of 494 events in placebo-treated patients were deaths.

Figure 5: Kaplan-Meier Curves for Overall Survival in RAISE



Number at Risk

CYRAMZA+FOLFIRI	536	497	421	345	269	195	114	78	53	34	22	12	4	0	0
Placebo+FOLFIRI	536	486	400	329	228	166	108	66	44	22	10	2	2	1	0

14.4 Hepatocellular Carcinoma

The efficacy of CYRAMZA was evaluated in REACH-2 (NCT02435433), a multinational, randomized, double-blind, placebo-controlled, multicenter study in patients with advanced HCC with AFP \geq 400 ng/mL who had disease progression on or after prior sorafenib therapy or who were intolerant to sorafenib. Patients in REACH-2 were required to have ECOG PS of 0 or 1, Child-Pugh A, BCLC stage B and no longer amenable to locoregional therapy, or BCLC stage C. Patients were randomized (2:1) to receive CYRAMZA 8 mg/kg or placebo every 2 weeks as an intravenous infusion until disease progression or unacceptable toxicity. Randomization was stratified by geographic region, macrovascular invasion (yes versus no), and ECOG PS (0 versus 1). The major efficacy outcome measure was OS. Additional efficacy outcome measures included PFS and ORR based on investigator assessment.

A total of 292 patients were randomized, 197 to the CYRAMZA-treatment group and 95 to the placebo-treatment group. Baseline demographics and disease characteristics were similar between the arms. The median age was 64 years (range 26-88); 80% were men; 50% were Asian; 58% had ECOG PS 0; 35% had macrovascular invasion; 72% had extrahepatic spread; 17% were sorafenib intolerant, 37% had hepatitis B, 26% had hepatitis C, 24% had significant prior alcohol use, and 64% had prior locoregional therapy.

Efficacy results are shown in [Table 15](#) and [Figure 6](#).

Table 15: Efficacy Results in REACH-2

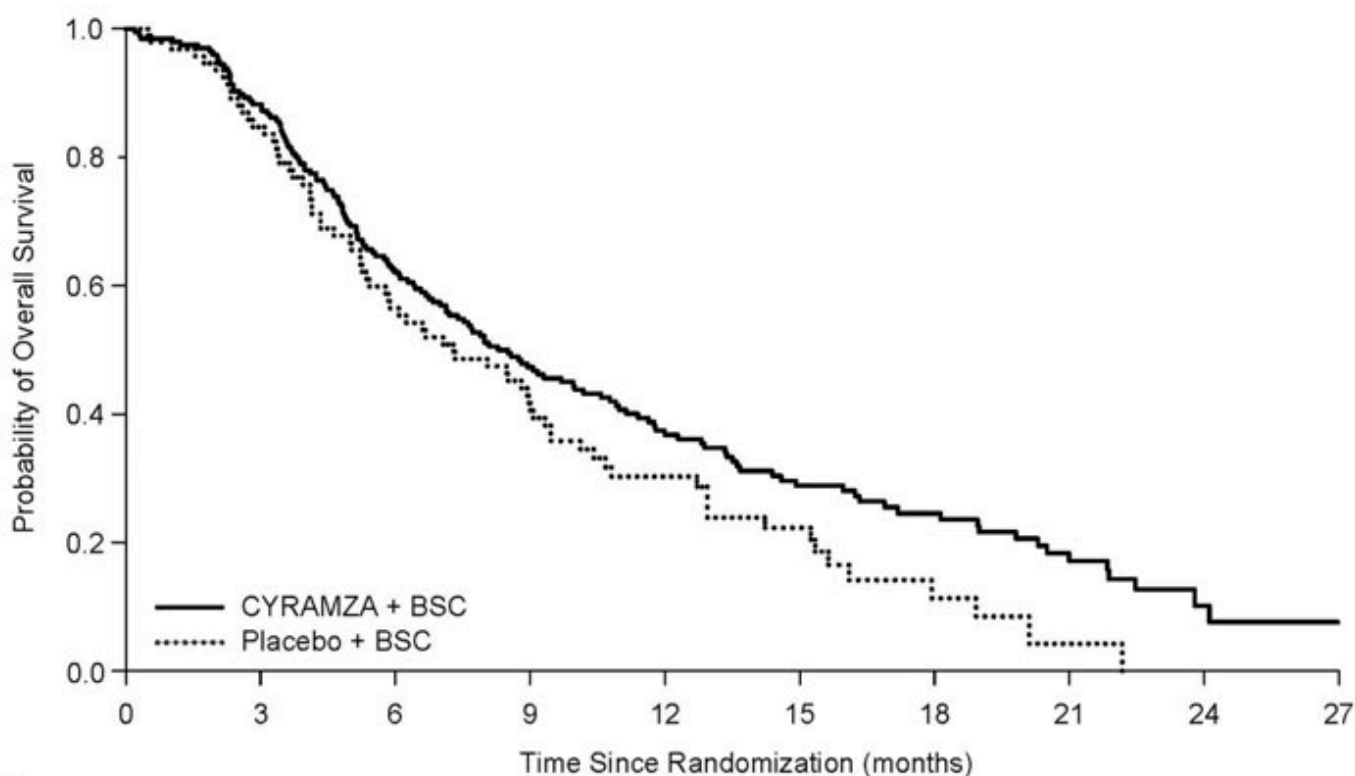
	CYRAMZA + BSC N=197	Placebo + BSC N=95
Overall Survival		
Number of deaths (%)	147 (75%)	74 (78%)
Median – months (95% CI)	8.5 (7.0, 10.6)	7.3 (5.4, 9.1)
Hazard Ratio (95% CI)	0.71 (0.53, 0.95)	
Stratified Log-rank p-value	0.020	
Progression-free Survival		
Number of events (%) ^a	172 (87%)	86 (91%)
Median – months (95% CI)	2.8 (2.8, 4.1)	1.6 (1.5, 2.7)
Hazard Ratio (95% CI)	0.45 (0.34, 0.60)	
Stratified Log-rank p-value	<0.0001	
Overall Response Rate^b		
Rate – percent (95% CI)	4.6% (1.7, 7.5)	1.1% (0, 3.1)

Abbreviations: BSC = best supportive care; CI = confidence interval

^a 26 of 172 events in CYRAMZA-treated patients and 9 of 86 events in placebo-treated patients were deaths.

^b all responses were partial

Figure 6: Kaplan-Meier Curves for Overall Survival in REACH-2



Number at Risk:

CYRAMZA + BSC	197	172	121	87	56	37	26	14	4
Placebo + BSC	95	76	50	36	19	12	4	1	0

[Hide](#)

16 HOW SUPPLIED/STORAGE AND HANDLING

CYRAMZA (ramucirumab) injection is a clear to slightly opalescent and colorless to slightly yellow, preservative-free solution supplied in single-dose vials.

- NDC 0002-7669-01
100 mg/10 mL (10 mg/mL), individually packaged in a carton
- NDC 0002-7678-01
500 mg/50 mL (10 mg/mL), individually packaged in a carton

Store vials in a refrigerator at 2°C to 8°C (36°F to 46°F) in the original carton to protect from light until time of use. Do not freeze or shake the vial.

[Hide](#)

17 PATIENT COUNSELING INFORMATION

Hemorrhage

Advise patients that CYRAMZA can cause severe bleeding. Advise patients to contact their health care provider for bleeding or symptoms of bleeding including lightheadedness [see *Warnings and Precautions (5.1)*].

Gastrointestinal Perforations

Advise patients to notify their health care provider for severe diarrhea, vomiting, or severe abdominal pain [see *Warnings and Precautions (5.2)*].

Impaired Wound Healing

Advise patients that CYRAMZA has the potential to impair wound healing. Instruct patients not to undergo surgery without first discussing this potential risk with their health care provider [see *Warnings and Precautions (5.3)*].

Arterial Thromboembolic Events

Advise patients of an increased risk of an arterial thromboembolic event [see *Warnings and Precautions (5.4)*].

Hypertension

Advise patients to undergo routine blood pressure monitoring and to contact their health care provider if blood pressure is elevated or if symptoms from hypertension occur including severe headache, lightheadedness, or neurologic symptoms [see *Warnings and Precautions (5.5)*].

Posterior Reversible Encephalopathy Syndrome

Advise patients to inform their health care provider if they develop neurological symptoms consistent with PRES (seizure, headache, nausea/vomiting, blindness, or altered consciousness) [see *Warnings and Precautions (5.8)*].

Embryo-Fetal Toxicity

Advise females of reproductive potential of the potential risk to a fetus. Advise females to inform their health care provider of a known or suspected pregnancy and to use effective contraception during CYRAMZA treatment and for 3 months after the last dose [see *Warnings and Precautions (5.11)*, *Use in Specific Populations (8.1, 8.3)*].

Lactation

Advise women not to breastfeed during CYRAMZA treatment and for 2 months after the last dose [see *Use in Specific Populations (8.2)*].

Infertility

Advise females of reproductive potential that CYRAMZA may impair fertility [see *Use in Specific Population (8.3)*].



Eli Lilly and Company, Indianapolis, IN 46285, USA

US License No. 1891

Copyright © 2014, 2025, Eli Lilly and Company. All rights reserved.

CYR-0018-USPI-20250127

[Hide](#)

[Close All Sections](#)

Revised: 1/2025

Document Id: fcbfa823-6de1-4417-ad0e-72e499c1eba4

Set id: c6080942-dee6-423e-b688-1272c2ae90d4

Version: 44

Effective Time: 20250127

Eli Lilly and Company

 [Your Privacy Choices](#)

[Cookie Settings](#)

[Terms of Use](#)

[Privacy Statement](#)

[Consumer Health Privacy Notice](#)

[Accessibility Statement](#)

