

HIGHLIGHTS OF PRESCRIBING INFORMATION

These highlights do not include all the information needed to use PRANDIN safely and effectively. See full prescribing information for PRANDIN.

PRANDIN® (repaglinide) tablets, for oral use

Initial U.S. Approval: 1997

RECENT MAJOR CHANGES

- Dosage and Administration (2.3) 2/2017

INDICATIONS AND USAGE

PRANDIN is a glinide indicated as an adjunct to diet and exercise to improve glycemic control in adults with type 2 diabetes mellitus. (1)

Limitation of Use:

Not for treatment of type 1 diabetes mellitus or diabetic ketoacidosis (1)

DOSAGE AND ADMINISTRATION

- The recommended starting dose is 0.5 mg orally before each meal if HbA1c is less than 8%; and 1 or 2 mg orally before each meal if HbA1c is 8% or greater. (2.1)
- The recommended dose range is 0.5 mg to 4 mg before meals, with a maximum daily dose of 16 mg. (2.1)
- The patient's dose should be doubled up to 4 mg with each meal until satisfactory glycemic control is achieved. At least one week should elapse to assess response after each dose adjustment. (2.1)
- Instruct patients to skip the dose of PRANDIN if a meal is skipped. In patients who experience hypoglycemia, the dose of PRANDIN should be reduced. (2.1; 5.1)
- Instruct patients to take PRANDIN within 30 minutes before meals. (2.1)
- In patients with severe renal impairment (CrCl = 20 – 40 mL/min), recommended starting dose is 0.5 mg orally before each meal. (2.2)
- Dose modifications are required when used concomitantly with some medications. (2.3,7)

DOSAGE FORMS AND STRENGTHS

Tablets: 0.5 mg, 1 mg, 2 mg (3)

CONTRAINDICATIONS

- Concomitant use with gemfibrozil (4)
- Known hypersensitivity to repaglinide or any inactive ingredients (4)

WARNINGS AND PRECAUTIONS

- Hypoglycemia:** PRANDIN may cause hypoglycemia. Skip the scheduled dose of PRANDIN if a meal is skipped to reduce the risk of hypoglycemia. Reduce the dose of PRANDIN if hypoglycemia occurs. (5.1)
- Serious Cardiovascular Adverse Reactions with Concomitant NPH-insulin:** PRANDIN is not indicated for use in combination with NPH-insulin. (5.2)
- Macrovascular outcomes:** There have been no clinical studies establishing conclusive evidence of macrovascular risk reduction with PRANDIN. (5.3)

ADVERSE REACTIONS

The most common adverse reactions (5% or greater incidence) among patients treated with PRANDIN were: hypoglycemia, upper respiratory infection, headache, sinusitis, arthralgia, nausea, diarrhea, and back pain. (6.1)

To report SUSPECTED ADVERSE REACTIONS, contact Novo Nordisk at 1-800-727-6500 or FDA at 1-800-FDA-1088 or www.fda.gov/medwatch.

DRUG INTERACTIONS

- Clopidogrel:** Avoid concomitant use; if used concomitantly initiate at 0.5 mg before each meal and limit total daily dose to 4 mg (7)
- Cyclosporine:** Limit daily dose of PRANDIN to 6 mg and increase frequency of glucose monitoring when co-administered (7)
- CYP2C8 and CYP3A4 Inhibitors and Drugs That May Increase the Risk of Hypoglycemia:** Co-administration may require PRANDIN dose reductions and increased frequency of glucose monitoring (7)
- CYP2C8 and CYP3A4 Inducers and Drugs That May Decrease the Blood Glucose Lowering Effect of PRANDIN:** Co-administration may require PRANDIN dose increases and increased frequency of glucose monitoring (7)
- Drugs That May Blunt Signs and Symptoms of Hypoglycemia:** Increased frequency of glucose monitoring may be required when co-administered (7)

USE IN SPECIFIC POPULATIONS

- Nursing mothers: Discontinue PRANDIN or nursing (8.3)

See 17 for PATIENT COUNSELING INFORMATION

Revised: 2/2017

FULL PRESCRIBING INFORMATION: CONTENTS*

1 INDICATIONS AND USAGE

2 DOSAGE AND ADMINISTRATION

3 DOSAGE FORMS AND STRENGTHS

4 CONTRAINDICATIONS

5 WARNINGS AND PRECAUTIONS

- 5.1 Hypoglycemia
- 5.2 Serious Cardiovascular Adverse Reactions with Concomitant Use with NPH-insulin
- 5.3 Macrovascular Outcomes

6 ADVERSE REACTIONS

- 6.1 Clinical Trial Experience
- 6.2 Postmarketing Experience

7 DRUG INTERACTIONS

8 USE IN SPECIFIC POPULATIONS

- 8.1 Pregnancy
- 8.3 Nursing Mothers
- 8.4 Pediatric Use
- 8.5 Geriatric Use

8.6 Renal Impairment

8.7 Hepatic Impairment

10 OVERDOSAGE

11 DESCRIPTION

12 CLINICAL PHARMACOLOGY

- 12.1 Mechanism of Action
- 12.2 Pharmacodynamics
- 12.3 Pharmacokinetics

13 NONCLINICAL TOXICOLOGY

- 13.1 Carcinogenesis, Mutagenesis, Impairment of Fertility

14 CLINICAL STUDIES

- 14.1 Monotherapy Trials
- 14.2 Combination Trials

16 HOW SUPPLIED/STORAGE AND HANDLING

17 PATIENT COUNSELING INFORMATION

*Sections or subsections omitted from the full prescribing information are not listed.

FULL PRESCRIBING INFORMATION

1 INDICATIONS AND USAGE

PRANDIN is indicated as an adjunct to diet and exercise to improve glycemic control in adults with type 2 diabetes mellitus.

Limitation of Use:

PRANDIN should not be used in patients with type 1 diabetes mellitus or for the treatment of diabetic ketoacidosis.

2 DOSAGE AND ADMINISTRATION

2.1 Recommended Dosage and Administration

The recommended starting dose for patients whose HbA_{1c} is less than 8% is 0.5 mg orally before each meal. For patients whose HbA_{1c} is 8% or greater the starting dose is 1 or 2 mg orally before each meal.

The recommended dose range is 0.5 mg to 4 mg before meals, with a maximum daily dose of 16 mg. The patient's dose should be doubled up to 4 mg with each meal until satisfactory glycemic control is achieved. At least one week should elapse to assess response after each dose adjustment.

Instruct patients to take PRANDIN within 30 minutes before meals. PRANDIN may be dosed 2, 3, or 4 times a day in response to changes in the patient's meal pattern.

In patients who skip meals, instruct patients to skip the scheduled dose of PRANDIN to reduce the risk of hypoglycemia. In patients who experience hypoglycemia, the dose of PRANDIN should be reduced [*see Warnings and Precautions (5.1)*].

2.2 Patients with Severe Renal Impairment

In patients with severe renal impairment (CrCl = 20 – 40 mL/min) initiate PRANDIN 0.5 mg orally before each meal. Gradually titrate the dose, if needed to achieve glycemic control.

2.3 Dose Modifications for Drug Interactions

Dosage adjustments are recommended in patients taking concomitant strong CYP3A4 or CYP2C8 inhibitors or strong CYP3A4 or CYP2C8 inducers [*see Drug Interactions (7.1), Clinical Pharmacology (12.3)*].

Concomitant use with gemfibrozil is contraindicated [*see Contraindications (4)*].

Avoid concomitant use of PRANDIN with clopidogrel. If concomitant use can not be avoided, initiate PRANDIN at 0.5 mg before each meal and do not exceed a total daily dose of 4 mg [*see Drug Interactions (7.1), Clinical Pharmacology (12.3)*].

Do not exceed a total daily dose of 6 mg of PRANDIN in patients receiving cyclosporine [*see Drug Interactions (7.1), Clinical Pharmacology (12.3)*].

3 DOSAGE FORMS AND STRENGTHS

- 0.5 mg tablets (white, biconvex tablets, embossed with the Novo Nordisk (Apis) bull symbol)
- 1 mg tablets (yellow, biconvex tablets, embossed with the Novo Nordisk (Apis) bull symbol)
- 2 mg tablets (peach, biconvex tablets, embossed with the Novo Nordisk (Apis) bull symbol)

4 CONTRAINDICATIONS

PRANDIN is contraindicated in patients with:

- Concomitant use of gemfibrozil [*see Drug Interactions (7.1)*]
- Known hypersensitivity to repaglinide or any inactive ingredients

5 WARNINGS AND PRECAUTIONS

5.1 Hypoglycemia

All glinides, including PRANDIN, can cause hypoglycemia [see *Adverse Reactions (6.1)*]. Severe hypoglycemia can cause seizures, may be life-threatening, or cause death. Hypoglycemia can impair concentration ability and reaction time; this may place an individual and others at risk in situations where these abilities are important (e.g., driving or operating other machinery).

Hypoglycemia can happen suddenly and symptoms may differ in each individual and change over time in the same individual. Symptomatic awareness of hypoglycemia may be less pronounced in patients with longstanding diabetes, in patients with diabetic nerve disease, in patients using medications that block the sympathetic nervous system (e.g., beta-blockers) [see *Drug Interactions (7)*], or in patients who experience recurrent hypoglycemia.

Factors which may increase the risk of hypoglycemia include changes in meal pattern (e.g., macronutrient content), changes in level of physical activity, changes to co-administered medication [see *Drug Interactions (7)*], and concomitant use with other antidiabetic agents. Patients with renal or hepatic impairment may be at higher risk of hypoglycemia [see *Use in Specific Populations (8.6, 8.7)*].

Patients should administer PRANDIN before meals and be instructed to skip the dose of PRANDIN if a meal is skipped. In patients who experience hypoglycemia, the dose of PRANDIN should be reduced [see *Dosage and Administration (2.1)*]. Patients and caregivers must be educated to recognize and manage hypoglycemia. Self-monitoring of blood glucose plays an essential role in the prevention and management of hypoglycemia. In patients at higher risk for hypoglycemia and patients who have reduced symptomatic awareness of hypoglycemia, increased frequency of blood glucose monitoring is recommended.

5.2 Serious Cardiovascular Adverse Reactions with Concomitant Use with NPH-insulin

Across seven controlled trials, there were six serious adverse events of myocardial ischemia in patients treated with PRANDIN plus NPH-insulin from two studies, and one event in patients using insulin formulations alone from another study [see *Adverse Reactions (6.1)*]. PRANDIN is not indicated for use in combination with NPH-insulin.

5.3 Macrovascular Outcomes

There have been no clinical studies establishing conclusive evidence of macrovascular risk reduction with PRANDIN.

6 ADVERSE REACTIONS

The following serious adverse reaction is also described elsewhere in the labeling:

Hypoglycemia [see *Warnings and Precautions (5.1)*]

6.1 Clinical Trials Experience

Because clinical trials are conducted under widely varying designs, the adverse reaction rates reported in one clinical trial may not be easily compared to those rates reported in another clinical trial, and may not reflect the rates actually observed in clinical practice.

PRANDIN has been administered to 2931 individuals during clinical trials. Approximately 1500 of these individuals with type 2 diabetes have been treated for at least 3 months, 1000 for at least 6 months, and 800 for at least 1 year. The majority of these individuals (1228) received PRANDIN in one of five 1-year, active-controlled trials. Over one year, 13% of PRANDIN patients were discontinued due to adverse reactions. The most common adverse reactions leading to withdrawal were hyperglycemia, hypoglycemia, and related symptoms.

Table 1 lists the common adverse reactions for PRANDIN patients compared to placebo in trials 12 to 24 weeks duration.

Table 1: Adverse Reactions (%) occurring \geq 2% in PRANDIN Treated Patients from Pool of 12 to 24 Week Placebo Controlled Trials*

	PRANDIN N=352	Placebo N=108
Upper Respiratory Infection	16	8
Headache	11	10
Sinusitis	6	2
Arthralgia	6	3
Nausea	5	5
Diarrhea	5	2
Back Pain	5	4
Rhinitis	3	3
Constipation	3	2
Vomiting	3	3
Paresthesia	3	3
Chest pain	3	1
Bronchitis	2	1
Dyspepsia	2	2
Urinary tract infection	2	1
Tooth disorder	2	0
Allergy	2	0

* See trial descriptions in *Clinical Trials (14)*

Hypoglycemia

In clinical trials with PRANDIN, hypoglycemia is the most commonly observed adverse reaction. Mild or moderate hypoglycemia occurred in 31% of PRANDIN treated patients and 7% of placebo treated patients [see *Warnings and Precautions (5.1)*].

Hypoglycemia was reported in 16% of 1228 PRANDIN patients, 20% of 417 glyburide patients, and 19% of 81 glipizide patients in 1-year controlled trials. Of PRANDIN-treated patients with symptomatic hypoglycemia, none developed coma or required hospitalization.

In a 24-week placebo controlled trial, patients who were naïve to oral hypoglycemic agent therapy and patients with a HbA_{1c} below 8% at baseline had a higher frequency of hypoglycemia.

Weight Gain

There was no average gain in body weight when patients previously treated with oral hypoglycemic agents were switched to PRANDIN. The average weight gain in patients treated with PRANDIN and not previously treated with sulfonylurea drugs was 3.3%.

Cardiovascular Events

The incidence of total serious cardiovascular adverse events, including ischemia, was higher for PRANDIN (51/1228 or 4%) than for sulfonylurea drugs (13/498 or 3%) in controlled comparator clinical trials.

Table 2: Summary of Serious Cardiovascular Events in Trials Comparing PRANDIN to Sulfonylureas (% of total patients with events)

	PRANDIN	SU*
Total Exposed	1228	498
Serious CV Events	4%	3%
Cardiac Ischemic Events	2%	2%
Deaths due to CV Events	0.5%	0.4%

* : glyburide and glipizide

Seven controlled clinical trials included PRANDIN combination therapy with NPH-insulin (n=431), insulin formulations alone (n=388) or other combinations (sulfonylurea plus NPH-insulin or PRANDIN plus metformin) (n=120). There were six serious adverse events of myocardial ischemia in patients treated with PRANDIN plus NPH-insulin from two studies, and one event in patients using insulin formulations alone from another study [see *Warnings and Precautions* (5.3)].

Combination Therapy with Thiazolidinediones

Hypoglycemia

During 24-week treatment clinical trials of PRANDIN-rosiglitazone or PRANDIN-pioglitazone combination therapy (a total of 250 patients in combination therapy), hypoglycemia (blood glucose < 50 mg/dL) occurred in 7% of patients in combination therapy compared to 7% for PRANDIN monotherapy, and 2% for thiazolidinedione monotherapy.

Peripheral Edema and Heart Failure

Peripheral edema was reported in 12 out of 250 (4.8%) PRANDIN-thiazolidinedione combination therapy patients and 3 out of 124 (2.4%) thiazolidinedione monotherapy patients, with no cases reported in these trials for PRANDIN monotherapy. There were reports in 2 of 250 patients (0.8%) treated with PRANDIN-thiazolidinedione therapy of episodes of edema with congestive heart failure. Both patients had a prior history of coronary artery disease and recovered after treatment with diuretic agents. No comparable cases in the monotherapy treatment groups were reported.

Weight Gain

Mean weight increases associated with combination, PRANDIN and pioglitazone therapy were 5.5 kg, 0.3 kg, and 2.0 kg respectively. Mean weight increases associated with combination, PRANDIN and rosiglitazone therapy were 4.5 kg, 1.3 kg, and 3.3 kg respectively.

Infrequent Adverse Events (<1% of Patients)

Less common adverse clinical or laboratory events observed in clinical trials included elevated liver enzymes, thrombocytopenia, leukopenia, and anaphylactoid reactions.

6.2 Postmarketing Experience

The following additional adverse reactions have been identified during post approval use of PRANDIN. Because these reactions are reported voluntarily from a population of uncertain size, it is generally not possible to reliably estimate their frequency or a causal relationship to drug exposure.

- Alopecia
- Hemolytic anemia
- Pancreatitis
- Stevens-Johnson Syndrome
- Severe hepatic dysfunction including jaundice and hepatitis

7 DRUG INTERACTIONS

Clinically Important Drug Interactions with PRANDIN

Table 3 includes a list of drugs with clinically important drug interactions when administered concomitantly with PRANDIN and instructions for preventing or managing them.

Table 3: Clinically Important Drug Interactions with PRANDIN

Gemfibrozil	
<i>Clinical Impact:</i>	Gemfibrozil significantly increased repaglinide exposures by 8.1 fold [see Clinical Pharmacology (12.3)]
<i>Intervention:</i>	Do not administer PRANDIN to patients receiving gemfibrozil [see Contraindications (4)].
Clopidogrel	
<i>Clinical Impact:</i>	Clopidogrel increased repaglinide exposures by 3.9-5.1 fold [see Clinical Pharmacology (12.3)]
<i>Intervention:</i>	Avoid concomitant use of PRANDIN with clopidogrel. If concomitant use can not be avoided, initiate PRANDIN at 0.5 mg before each meal and do not exceed a total daily dose of 4 mg [see DOSAGE AND ADMINISTRATION (2.3)]. Increased frequency of glucose monitoring may be required during concomitant use.
Cyclosporine	
<i>Clinical Impact:</i>	Cyclosporine increased low dose repaglinide exposures by 2.5 fold [see Clinical Pharmacology (12.3)]
<i>Intervention:</i>	Daily maximum PRANDIN dose should be limited to 6 mg, and increased frequency of glucose monitoring may be required when PRANDIN is co-administered with cyclosporine.
CYP2C8 and CYP3A4 Inhibitors	
<i>Intervention:</i>	PRANDIN dose reductions and increased frequency of glucose monitoring may be required when co-administered.
<i>Examples:</i>	Drugs that are known to inhibit CYP3A4 include antifungal agents (ketoconazole, itraconazole) and antibacterial agents (clarithromycin, erythromycin). Drugs that are known to inhibit CYP2C8 include trimethoprim, gemfibrozil, montelukast, deferasirox, and clopidogrel.
CYP2C8 and CYP3A4 Inducers	
<i>Intervention:</i>	PRANDIN dose increases and increased frequency of glucose monitoring may be required when co-administered.
<i>Examples:</i>	Drugs that induce the CYP3A4 and/or 2C8 enzyme systems include rifampin, barbiturates, and carbamazepine
Drugs That May Increase the Risk of Hypoglycemia	
<i>Intervention:</i>	PRANDIN dose reductions and increased frequency of glucose monitoring may be required when co-administered.
<i>Examples:</i>	Antidiabetic agents, ACE inhibitors, angiotensin II receptor blocking agents, disopyramide, fibrates, fluoxetine, monoamine oxidase inhibitors, nonsteroidal anti-inflammatory agents (NSAIDs), pentoxifylline, pramlintide, propoxyphene, salicylates, somatostatin analogs (e.g., octreotide), and sulfonamide antibiotics
Drugs That May Decrease the Blood Glucose Lowering Effect of PRANDIN	
<i>Intervention:</i>	PRANDIN dose increases and increased frequency of glucose monitoring may be required when co-administered.
<i>Examples:</i>	Atypical antipsychotics (e.g., olanzapine and clozapine), calcium channel antagonists, corticosteroids, danazol, diuretics, estrogens, glucagon, isoniazid, niacin, oral contraceptives, phenothiazines, progestogens (e.g., in oral contraceptives), protease inhibitors, somatropin, sympathomimetic agents (e.g., albuterol, epinephrine, terbutaline), and thyroid hormones.
Drugs That May Blunt Signs and Symptoms of Hypoglycemia	
<i>Intervention:</i>	Increased frequency of glucose monitoring may be required when PRANDIN is co-administered with these drugs.
<i>Examples:</i>	beta-blockers, clonidine, guanethidine, and reserpine

8 USE IN SPECIFIC POPULATIONS

8.1 Pregnancy

Pregnancy Category C.

There are no adequate and well-controlled studies in pregnant women. It is unknown whether PRANDIN can cause fetal harm when administered to a pregnant woman. PRANDIN should be used during pregnancy only if the potential benefit justifies the potential risk to the fetus.

Repaglinide was not teratogenic in rats or rabbits at doses 40 times (rats) and approximately 0.8 times (rabbit) clinical exposure (on a mg/m² basis) throughout pregnancy. Offspring of rat dams exposed to repaglinide at 15 times clinical exposure on a mg/m² basis during days 17 to 22 of gestation and during lactation developed nonteratogenic skeletal deformities consisting of shortening, thickening, and bending of the humerus during the postnatal period. This effect was not seen at doses up to 2.5 times clinical exposure (on a mg/m² basis) on days 1 to 22 of pregnancy or at higher doses given during days 1 to 16 of pregnancy. Relevant human exposure has not occurred to date and therefore the safety of PRANDIN administration throughout pregnancy or lactation cannot be established.

8.3 Nursing Mothers

Although it is not known whether repaglinide is excreted in human milk some oral agents are known to be excreted by this route. Because the potential for hypoglycemia in nursing infants may exist, and because of the effects on nursing animals, a decision should be made as to whether PRANDIN should be discontinued in nursing mothers, or if mothers should discontinue nursing. If PRANDIN is discontinued and if diet alone is inadequate for controlling blood glucose, insulin therapy should be considered. In rat reproduction studies, measurable levels of repaglinide were detected in the breast milk of the dams and lowered blood glucose levels were observed in the pups. Cross fostering studies indicated that skeletal changes [see *Use in Specific Populations (8.1)*] could be induced in control pups nursed by treated dams, although this occurred to a lesser degree than those pups treated *in utero*.

8.4 Pediatric Use

Safety and effectiveness have not been established in pediatric patients.

8.5 Geriatric Use

In clinical studies of 24 weeks or greater duration, 415 patients were over 65 years of age and no patients were greater than 75 years of age. In one-year, active-controlled trials, no differences were seen in effectiveness or adverse events between these subjects and those less than 65. There was no increase in frequency or severity of hypoglycemia in older subjects, but greater sensitivity of some older individuals to PRANDIN therapy cannot be ruled out.

8.6 Renal Impairment

Pharmacokinetic studies of repaglinide were conducted in patients with mild to moderate renal function impairment ($\text{CrCl} = 40 - 80$ mL/min), and severe renal function impairment ($\text{CrCl} = 20 - 40$ mL/min). Initial dose adjustment is not required in patients with mild to moderate renal dysfunction. However, patients with severe renal function impairment should initiate PRANDIN therapy with the 0.5 mg dose and be carefully titrated [see *Dosage and Administration (2.2)*].

Studies were not conducted in patients with creatinine clearances below 20 mL/min or patients with renal failure requiring hemodialysis.

8.7 Hepatic Impairment

A single-dose study was conducted 12 patients with chronic liver disease. Patients with moderate to severe impairment of liver function had higher and more prolonged serum concentrations. Therefore, PRANDIN should be used cautiously in patients with impaired liver function. Longer intervals between dose adjustments may be needed to allow full assessment of response.

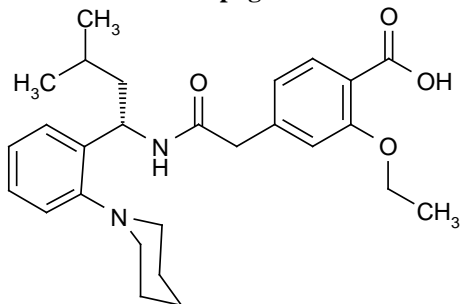
10 OVERDOSAGE

Severe hypoglycemic reactions with coma, seizure, or other neurological impairment may occur and constitute medical emergencies requiring immediate hospitalization. Hypoglycemic symptoms without loss of consciousness or neurologic findings should be treated aggressively with oral glucose and adjustments in drug dosage and/or meal patterns. Close monitoring may continue until the physician is assured that the patient is out of danger. Patients should be closely monitored for a minimum of 24 to 48 hours, since hypoglycemia may recur after apparent clinical recovery. There is no evidence that PRANDIN is dialyzable using hemodialysis.

11 DESCRIPTION

PRANDIN (repaglinide) is an oral blood glucose-lowering drug of the glinide class. Repaglinide, S(+)-2-ethoxy-4(2((3-methyl-1-(2-(1-piperidinyl) phenyl)-butyl) amino)-2-oxoethyl) benzoic acid, is chemically unrelated to the oral sulfonylurea insulin secretagogues.

Structural Formula of Repaglinide



Repaglinide is a white to off-white powder with molecular formula $C_{27}H_{36}N_2O_4$ and a molecular weight of 452.6. PRANDIN tablets contain 0.5 mg, 1 mg, or 2 mg of repaglinide. In addition each tablet contains the following inactive ingredients: calcium hydrogen phosphate (anhydrous), microcrystalline cellulose, maize starch, polacrillin potassium, povidone, glycerol (85%), magnesium stearate, meglumine, and poloxamer. The 1 mg and 2 mg tablets contain iron oxides (yellow and red, respectively) as coloring agents.

12 CLINICAL PHARMACOLOGY

12.1 Mechanism of Action

Repaglinide lowers blood glucose levels by stimulating the release of insulin from the pancreas. This action is dependent upon functioning beta (β) cells in the pancreatic islets. Insulin release is glucose-dependent and diminishes at low glucose concentrations.

Repaglinide closes ATP-dependent potassium channels in the β -cell membrane by binding at characterizable sites. This potassium channel blockade depolarizes the β -cell, which leads to an opening of calcium channels. The resulting increased calcium influx induces insulin secretion. The ion channel mechanism is highly tissue selective with low affinity for heart and skeletal muscle.

12.2 Pharmacodynamics

A four-week, double-blind, placebo-controlled dose-response trial was conducted in 138 patients with type 2 diabetes using doses ranging from 0.25 (not an approved dose) to 4 mg taken with each of three meals. PRANDIN therapy resulted in dose-proportional glucose lowering over the full dose range. Plasma insulin levels increased after meals and reverted toward baseline before the next meal. Most of the fasting blood glucose-lowering effect was demonstrated within 1-2 weeks.

In a double-blind, placebo-controlled, 3-month dose titration study, PRANDIN or placebo doses for each patient were increased weekly from 0.25 mg (not an approved dose) through 0.5, 1, and 2 mg, to a maximum of 4 mg, until a fasting plasma glucose (FPG) level <160 mg/dL was achieved or the maximum dose reached. The dose that achieved the targeted control or the maximum dose was continued to end of study. FPG and 2-hour post-prandial glucose (PPG) increased in patients receiving placebo and decreased in patients treated with repaglinide. Differences between the repaglinide- and placebo-treated groups were -61 mg/dL (FPG) and -104 mg/dL (PPG) (Table 4).

Table 4: PRANDIN vs Placebo:

Mean Change from Baseline after 3 Months of Treatment

	Repaglinide	Placebo
N	66	33
Fasting Plasma Glucose (mg/dL)		
Baseline	220.2	215.3
Change from baseline (at last visit)	-31.0^*	30.3
Post Prandial Glucose (mg/dL)		
Baseline	261.7	245.2
Change from baseline (at last visit)	-47.6^*	56.5

*: $p < 0.05$ for between group difference

The dosing of PRANDIN relative to meal-related insulin release was studied in three trials including 58 patients. Glycemic control was maintained during a period in which the meal and dosing pattern was varied (2, 3 or 4 meals per day; before meals x 2, 3, or 4) compared with a period of 3 regular meals and 3 doses per day (before meals x 3). Blood glucose-lowering effect did not differ when PRANDIN was administered at the start of a meal, 15 minutes before, or 30 minutes before the meal.

12.3 Pharmacokinetics

The pharmacokinetic parameters of repaglinide obtained from a single-dose, crossover study in healthy subjects and from a multiple-dose, parallel, dose-proportionality (0.5, 1, 2 and 4 mg) study in patients with type 2 diabetes are summarized in Tables 5 and 6. These data indicate that repaglinide did not accumulate in serum. Clearance of oral repaglinide did not change over the 0.5 - 4 mg dose range, indicating a linear relationship between dose and plasma drug levels.

Table 5: Pharmacokinetic Parameters for Repaglinide in Healthy Subjects

Parameter	
CL (based on i.v.)	38 ± 16 L/hr
V _{ss} (based on i.v.)	31 ± 12 L
AbsBio	56 ± 9%

CL = total body clearance
V_{ss} = volume of distribution at steady state
AbsBio = absolute bioavailability

Table 6: Pharmacokinetic Parameters for Repaglinide in Patients with Type 2 Diabetes*

Dose (mg)	Pharmacokinetic Parameter	
	AUC _{0-24 hr} (ng/mL*hr) Mean (SD)	C _{max0-5 hr} (ng/mL) Mean (SD)
0.5	68.9 (154.4)	9.8 (10.2)
1	125.8 (129.8)	18.3 (9.1)
2	152.4 (89.60)	26.0 (13.0)
4	447.4 (211.3)	65.8 (30.1)
	T _{max0-5 hr} Means (SD)	T ^{1/2} Means (Ind Range)
0.5 - 4	1.0 - 1.4 (0.3 - 0.5) hr	1.0 - 1.4 (0.4 - 8.0) hr

*dosed preprandially with three meals

Absorption

After oral administration, repaglinide is completely absorbed from the gastrointestinal tract. After single and multiple oral doses in healthy subjects or in patients, peak plasma drug levels (C_{max}) occur within 1 hour (T_{max}). Repaglinide is eliminated from the blood stream with a half-life of approximately 1 hour. The mean absolute bioavailability is 56%. When repaglinide was given with food, the mean T_{max} was not changed, but the mean C_{max} and AUC (area under the time/plasma concentration curve) were decreased 20% and 12.4%, respectively.

Distribution

After intravenous (IV) dosing in healthy subjects, the volume of distribution at steady state (V_{ss}) was 31 L, and the total body clearance (CL) was 38 L/h. Protein binding and binding to human serum albumin was greater than 98%.

Metabolism and Elimination

Repaglinide is completely metabolized by oxidative biotransformation and direct conjugation with glucuronic acid after either an IV or oral dose. The major metabolites are an oxidized dicarboxylic acid (M2), the aromatic amine (M1), and the acyl glucuronide (M7). The cytochrome P-450 enzyme system, specifically 2C8 and 3A4, have been shown to be involved in the N-dealkylation of repaglinide to M2 and the further oxidation to M1. Metabolites do not contribute to the glucose-lowering effect of repaglinide.

Within 96 hours after dosing with ¹⁴C-repaglinide as a single, oral dose, approximately 90% of the radiolabel was recovered in the feces and approximately 8% in the urine. Only 0.1% of the dose is cleared in the urine as parent compound. The major metabolite (M2) accounted for 60% of the administered dose. Less than 2% of parent drug was recovered in feces. Repaglinide appears to be a substrate for active hepatic uptake transporter (organic anion transporting protein OATP1B1).

Variability of Exposure

Repaglinide AUC after multiple doses of 0.25 to 4 mg with each meal varies over a wide range. The intra-individual and inter-individual coefficients of variation were 36% and 69%, respectively. AUC over the therapeutic dose range included 69 to 1005 ng/mL*hr, but AUC exposure up to 5417 ng/mL*hr was reached in dose escalation studies without apparent adverse consequences.

Specific Populations

Geriatric

Healthy volunteers were treated with a regimen of 2 mg PRANDIN taken before each of 3 meals. There were no significant differences in repaglinide pharmacokinetics between the group of patients <65 years of age and a comparably sized group of patients ≥65 years of age [see *Use in Specific Populations (8.5)*].

Gender

A comparison of pharmacokinetics in males and females showed the AUC over the 0.5 mg to 4 mg dose range to be 15% to 70% higher in females with type 2 diabetes. This difference was not reflected in the frequency of hypoglycemic episodes (male: 16%; female: 17%) or other adverse events.

Race

No pharmacokinetic studies to assess the effects of race have been performed, but in a U.S. 1-year study in patients with type 2 diabetes, the blood glucose-lowering effect was comparable between Caucasians (n=297) and African-Americans (n=33). In a U.S. dose-response study, there was no apparent difference in exposure (AUC) between Caucasians (n=74) and Hispanics (n=33).

Renal Impairment

Single-dose and steady-state pharmacokinetics of repaglinide were compared between patients with type 2 diabetes and normal renal function (CrCl > 80 mL/min), mild to moderate renal function impairment (CrCl = 40 – 80 mL/min), and severe renal function impairment (CrCl = 20 – 40 mL/min). Both AUC and C_{max} of repaglinide were similar in patients with normal and mild to moderately impaired renal function (mean values 56.7 ng/mL*hr vs 57.2 ng/mL*hr and 37.5 ng/mL vs 37.7 ng/mL, respectively.) Patients with severely reduced renal function had elevated mean AUC and C_{max} values (98.0 ng/mL*hr and 50.7 ng/mL, respectively), but this study showed only a weak correlation between repaglinide levels and creatinine clearance.

Hepatic Impairment

A single-dose, open-label study was conducted in 12 healthy subjects and 12 patients with chronic liver disease (CLD) classified by Child-Pugh scale and caffeine clearance. Patients with moderate to severe impairment of liver function had higher and more prolonged serum concentrations of both total and unbound repaglinide than healthy subjects (AUC_{healthy}: 91.6 ng/mL*hr; AUC_{CLD patients}: 368.9 ng/mL*hr; C_{max, healthy}: 46.7 ng/mL; C_{max, CLD patients}: 105.4 ng/mL). AUC was statistically correlated with caffeine clearance. No difference in glucose profiles was observed across patient groups.

Drug-Drug Interactions

Drug interaction studies performed in healthy volunteers show that PRANDIN had no clinically relevant effect on the pharmacokinetic properties of digoxin, theophylline, or warfarin. Co-administration of cimetidine with PRANDIN did not significantly alter the absorption and disposition of repaglinide.

Additionally, the following drugs were studied in healthy volunteers with co-administration of PRANDIN.

Table 7: Effect of Other Drugs on AUC and C_{max} of Repaglinide

Study Drug	Dosing	Repaglinide Dosing ¹	Repaglinide	
			AUC	C _{max}
Clarithromycin*	250 mg BID for 4 days		40% ↑	67% ↑
			(day 1) 5.1 fold ↑ (3.9-6.6)	2.5 fold ↑ (1.8-3.5)
Clopidogrel*	300 mg (Day 1)	0.25 mg	(day 3) 3.9 fold ↑	2.0 fold ↑
	75 mg QD (Day 2-3)	(Day 1 and 3)	(2.9-5.3)	(1.3-3.1)
Cyclosporine	100 mg (2 doses 12 hours apart)		2.5 fold ↑	1.8 fold ↑

Deferasirox*	30 mg/kg QD for 4 days	0.5 mg	2.3 fold ↑	62% ↑
Fenofibrate	200 mg QD for 5 days		0%	0%
Gemfibrozil*	600 mg BID for 3 days		8.1 fold ↑	2.4 fold ↑
Itraconazole*	100 mg BID for 3 days		1.4 fold ↑	1.5 fold ↑
Gemfibrozil + Itraconazole* Co-administration	Gem: 600 mg BID for 3 days Itra: 100 mg BID for 3 days		19 fold ↑	2.8 fold ↑
Ketoconazole	200 mg QD for 4 days	2 mg	15% ↑	16% ↑
Levonorgestrel/ethinyl Estradiol	(0.15 mg/0.03 mg) Combination tablet QD for 21 days	2 mg	0%	20% ↑
Nifedipine*	10 mg TID for 4 days	2 mg	0%	0%
Rifampin*	600 mg QD for 6-7 days	4 mg	32 – 80% ↓	17 - 79% ↓
Simvastatin	20 mg QD for 4 days	2 mg	0%	26% ↑
Trimethoprim*	160 mg BID for 2 days 160 mg QD for 1 day		61% ↑	41% ↑

[†] Unless indicated all drug interactions were observed with single dose of 0.25 mg repaglinide

↑ indicates increase

↓ indicates decrease

* Indicates data are from published literature

13 NONCLINICAL TOXICOLOGY

13.1 Carcinogenesis, Mutagenesis, Impairment of Fertility

In a 104-week carcinogenicity study in rats at doses up to 120 mg/kg/day, which is approximately 60 times clinical exposure on a mg/m² basis, the incidences of benign adenomas of the thyroid and liver were increased in male rats. No evidence of carcinogenicity was found in female rats. The higher incidences of thyroid and liver tumors in male rats were not seen at lower dose of 30 mg/kg/day and 60 mg/kg/day respectively (which are over 15 and 30 times, respectively, clinical exposures on a mg/m² basis). In a 104-week carcinogenicity study in mice at doses up to 500 mg/kg/day, no evidence of carcinogenicity was found in mice (which is approximately 125 times clinical exposure on a mg/m² basis).

Repaglinide was non-genotoxic in a battery of *in vivo* and *in vitro* studies: Bacterial mutagenesis (Ames test), *in vitro* forward cell mutation assay in V79 cells (HGPRT), *in vitro* chromosomal aberration assay in human lymphocytes, unscheduled and replicating DNA synthesis in rat liver, and *in vivo* mouse and rat micronucleus tests.

In a rat fertility study, repaglinide was administered to male and female rats at doses up to 300 and 80 mg/kg/day, respectively. No adverse effects on fertility were observed (which are over 40 times clinical exposure on a mg/m² basis).

14 CLINICAL STUDIES

14.1 Monotherapy Trials

A double-blind, placebo-controlled trial was carried out in 362 patients treated for 24 weeks. HbA_{1c} for the PRANDIN-treated groups (1 and 4 mg groups combined) at the end of the study was decreased compared to the placebo-treated group in treatment naïve patients and in patients previously treated with oral hypoglycemic agents by 2.1% and 1.7%, respectively. In this fixed-dose trial, patients who were treatment naïve to oral hypoglycemic agent therapy and patients with a HbA_{1c} below 8% at baseline showed greater blood glucose-lowering.

14.2 Combination Trials

PRANDIN in Combination With Metformin

PRANDIN was studied in combination with metformin in 83 patients not satisfactorily controlled on exercise, diet, and metformin alone. PRANDIN dosage was titrated for 4 to 8 weeks, followed by a 3-month maintenance period. Combination therapy with PRANDIN and metformin resulted in statistically significant improvement in HbA_{1c} and fasting plasma glucose (FPG) compared to PRANDIN or metformin monotherapy (Table 8). In this study where metformin dosage was kept constant, the combination therapy of PRANDIN and metformin showed dose-sparing effects with respect to PRANDIN. The improvement in HbA_{1c} and FPG of the combination group was achieved at a lower daily PRANDIN dosage than in the PRANDIN monotherapy group (Table 8).

Table 8: PRANDIN in Combination with Metformin:
Mean Change from Baseline after 4 to 5 Months of Treatment¹

	PRANDIN Monotherapy	PRANDIN Combination Therapy with Metformin	Metformin Monotherapy
N	28	27	27
Median Final Dose (mg/day)	12	6 (PRANDIN) 1500 (metformin)	1500
HbA _{1c} (%)			
Baseline	8.6	8.3	8.6
Change from baseline	-0.38	-1.41*	-0.33
Fasting Plasma Glucose (mg/dL)			
Baseline	174	184	194
Change from baseline	8.8	-39.2*	-4.5
Weight (kg)			
Baseline	87	93	91
Change from baseline	3.0	2.4 [#]	-0.90

¹: based on intent-to-treat analysis

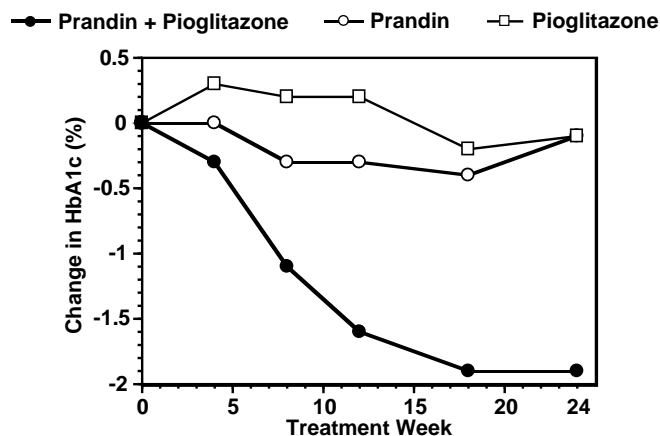
*: p < 0.05, for pairwise comparisons with PRANDIN and metformin monotherapy.

[#]: p < 0.05, for pairwise comparison with metformin.

PRANDIN in Combination With Pioglitazone

A combination therapy regimen of PRANDIN and pioglitazone (N=123) was compared to PRANDIN alone (N=61) and pioglitazone alone (N=62) in a 24-week trial that enrolled 246 patients previously treated with sulfonylurea or metformin monotherapy (HbA_{1c} > 7.0%). PRANDIN dosage was titrated during the first 12 weeks, followed by a 12-week maintenance period. Combination therapy resulted in statistically significant improvement in HbA_{1c} and FPG compared to monotherapy (Figure 1). The changes from baseline for completers in FPG (mg/dL) and HbA_{1c} (%), respectively were: -39.8 mg/dL and -0.1% for PRANDIN, -35.3 mg/dL and -0.1% for pioglitazone and -92.4 mg/dL and -1.9% for the combination. In this study where pioglitazone dosage was kept constant, the combination therapy group showed dose-sparing effects with respect to PRANDIN (see Figure 1 Legend). The improvement in HbA_{1c} and FPG of the combination group was achieved at a lower daily PRANDIN dosage than in the PRANDIN monotherapy group.

Figure 1: PRANDIN in Combination with Pioglitazone: HbA_{1c} Values



LEGEND: HbA_{1c} values by study week for patients who completed study (combination, N = 101; PRANDIN, N = 35, pioglitazone, N = 26). Subjects with FPG above 270 mg/dL were withdrawn from the study. Pioglitazone dose: fixed at 30 mg/day; PRANDIN median final dose: 6 mg/day for combination and 10 mg/day for monotherapy.

PRANDIN in Combination With Rosiglitazone

A combination therapy regimen of PRANDIN and rosiglitazone was compared to monotherapy with either agent alone in a 24-week trial that enrolled 252 patients previously treated with sulfonylurea or metformin (HbA_{1c} > 7.0%). Combination therapy resulted in statistically significant improvement in HbA_{1c} and FPG compared to monotherapy (Table 9 below). The glycemic effects of the combination therapy were dose-sparing with respect to both total daily PRANDIN dosage and total daily rosiglitazone dosage (see Table 9 Legend). The improvement in HbA_{1c} and FPG of the combination therapy group was achieved with lower daily dose of PRANDIN and rosiglitazone, as compared to the respective monotherapy groups.

**Table 9: PRANDIN in Combination with Rosiglitazone:
Mean Change from Baseline in a 24-Week Study¹**

	PRANDIN Monotherapy	PRANDIN Combination Therapy with Rosiglitazone	Rosiglitazone Monotherapy
N	63	127	62
Median Final Dose (mg/day)	12	6 (PRANDIN) 4 (Rosiglitazone)	8
HbA_{1c} (%)			
Baseline	9.3	9.1	9.0
Change from baseline	-0.17	-1.43*	-0.56
Fasting Plasma Glucose (mg/dL)			
Baseline	269	257	252
Change from baseline	-54	-94*	-67
Change in Weight (kg)	+1.3	+4.5 [#]	+3.3

¹: based on intent-to-treat analysis

*: p-value ≤ 0.001 for comparison to either monotherapy

[#]: p-value < 0.001 for comparison to PRANDIN

16 HOW SUPPLIED/STORAGE AND HANDLING

PRANDIN (repaglinide) tablets are supplied as biconvex tablets available in 0.5 mg (white), 1 mg (yellow) and 2 mg (peach) strengths and are embossed with the Novo Nordisk (Apis) bull symbol.

0.5 mg tablets (white)	Bottles of 100	NDC 0169-0081-81
	Bottles of 500	NDC 0169-0081-82
1 mg tablets (yellow)	Bottles of 100	NDC 0169-0082-81
	Bottles of 500	NDC 0169-0082-82
2 mg tablets (peach)	Bottles of 100	NDC 0169-0084-81
	Bottles of 500	NDC 0169-0084-82

Store at 20° to 25° C (68° to 77° F) [see USP Controlled Room Temperature].

Protect from moisture. Keep bottles tightly closed.

Dispense in tight containers with safety closures.

17 PATIENT COUNSELING INFORMATION

Hypoglycemia

Inform patients that PRANDIN can cause hypoglycemia and instruct patients and their caregivers on self-management procedures including glucose monitoring and management of hypoglycemia. Inform patients that their ability to concentrate and react may be impaired as a result of hypoglycemia. In patients at higher risk for hypoglycemia and patients who have reduced symptomatic awareness of hypoglycemia, increased frequency of blood glucose monitoring is recommended [see *Warnings and Precautions (5.1)*].

Administration

Instruct patients to take PRANDIN within 30 minutes before meals. Instruct patients to skip their dose of PRANDIN when a meal is skipped. [see *Dosage and Administration (2)*].

Drug Interactions

Discuss potential drug interactions with patients and inform them of potential drug-drug interactions with PRANDIN. [see *Drug Interactions (7)*].

PRANDIN® is a registered trademark of Novo Nordisk A/S.

© 2009-201X Novo Nordisk

Manufactured for:
Novo Nordisk A/S
DK-2880 Bagsvaerd, Denmark

For information contact:
Novo Nordisk Inc.
800 Scudders Mill Road
Plainsboro, NJ 08536
1-800-727-6500
www.novonordisk-us.com