

**ANNEX I**  
**SUMMARY OF PRODUCT CHARACTERISTICS**

## 1. NAME OF THE MEDICINAL PRODUCT

Onbrez Breezhaler 150 microgram inhalation powder, hard capsules

## 2. QUALITATIVE AND QUANTITATIVE COMPOSITION

Each capsule contains indacaterol maleate equivalent to 150 microgram indacaterol.

The delivered dose leaving the mouthpiece of the Onbrez Breezhaler inhaler is indacaterol maleate equivalent to 120 microgram indacaterol.

Excipients:

Each capsule contains 24.8 mg lactose.

For the full list of excipients, see section 6.1.

## 3. PHARMACEUTICAL FORM

Inhalation powder, hard capsule

Clear colourless capsules containing a white powder, with “IDL 150” printed in black above and company logo (ℓ) printed in black below a black bar.

## 4. CLINICAL PARTICULARS

### 4.1 Therapeutic indications

Onbrez Breezhaler is indicated for maintenance bronchodilator treatment of airflow obstruction in adult patients with chronic obstructive pulmonary disease (COPD).

### 4.2 Posology and method of administration

#### Posology

The recommended dose is the inhalation of the content of one 150 microgram capsule once a day, using the Onbrez Breezhaler inhaler. The dose should only be increased on medical advice.

The inhalation of the content of one 300 microgram capsule once a day, using the Onbrez Breezhaler inhaler has been shown to provide additional clinical benefit with regard to breathlessness, particularly for patients with severe COPD. The maximum dose is 300 microgram once daily.

Onbrez Breezhaler should be administered at the same time of the day each day.

If a dose is missed the next dose should be taken at the usual time the next day.

#### Elderly population

Maximum plasma concentration and overall systemic exposure increase with age but no dose adjustment is required in elderly patients.

#### Paediatric population

There is no relevant use of Onbrez Breezhaler in the paediatric population (under 18 years).

#### Hepatic impairment

No dose adjustment is required for patients with mild and moderate hepatic impairment. There are no data available for use of Onbrez Breezhaler in patients with severe hepatic impairment.

#### Renal impairment

No dose adjustment is required for patients with renal impairment.

#### Method of administration

For inhalation use only.

Onbrez Breezhaler capsules must be administered only using the Onbrez Breezhaler inhaler (see section 6.6).

Onbrez Breezhaler capsules must not be swallowed.

### **4.3 Contraindications**

Hypersensitivity to the active substance, to lactose or to any of the other excipients listed in section 6.1.

### **4.4 Special warnings and precautions for use**

#### Asthma

Onbrez Breezhaler is a long-acting beta<sub>2</sub>-adrenergic agonist, which is only indicated for COPD and should not be used in asthma due to the absence of long-term outcome data in asthma.

Long-acting beta<sub>2</sub>-adrenergic agonists may increase the risk of asthma-related serious adverse events, including asthma-related deaths, when used for the treatment of asthma.

#### Hypersensitivity

Immediate hypersensitivity reactions have been reported after administration of Onbrez Breezhaler. If signs suggesting allergic reactions (in particular, difficulties in breathing or swallowing, swelling of tongue, lips and face, urticaria, skin rash) occur, Onbrez Breezhaler should be discontinued immediately and alternative therapy instituted.

#### Paradoxical bronchospasm

As with other inhalation therapy, administration of Onbrez Breezhaler may result in paradoxical bronchospasm that may be life-threatening. If paradoxical bronchospasm occurs Onbrez Breezhaler should be discontinued immediately and alternative therapy substituted.

#### Deterioration of disease

Onbrez Breezhaler is not indicated for the treatment of acute episodes of bronchospasm, i.e. as rescue therapy. In the event of deterioration of COPD during treatment with Onbrez Breezhaler, a re-evaluation of the patient and of the COPD treatment regimen should be undertaken. An increase in the daily dose of Onbrez Breezhaler beyond the maximum dose of 300 microgram is not appropriate.

#### Systemic effects

Although no clinically relevant effect on the cardiovascular system is usually seen after the administration of Onbrez Breezhaler at the recommended doses, as with other beta<sub>2</sub>-adrenergic agonists, indacaterol should be used with caution in patients with cardiovascular disorders (coronary artery disease, acute myocardial infarction, cardiac arrhythmias, hypertension), in patients with convulsive disorders or thyrotoxicosis, and in patients who are unusually responsive to beta<sub>2</sub>-adrenergic agonists.

### Cardiovascular effects

Like other beta<sub>2</sub>-adrenergic agonists, indacaterol may produce a clinically significant cardiovascular effect in some patients as measured by increases in pulse rate, blood pressure, and/or symptoms. In case such effects occur, treatment may need to be discontinued. In addition, beta-adrenergic agonists have been reported to produce electrocardiogram (ECG) changes, such as flattening of the T wave, prolongation of QT interval and ST segment depression, although the clinical significance of these observations is unknown. Therefore, long-acting beta<sub>2</sub>-adrenergic agonists such as Onbrez Breezhaler should be used with caution in patients with known or suspected prolongation of the QT interval or treated with medicinal products affecting the QT interval.

Clinically relevant effects on prolongation of the QT<sub>c</sub>-interval have not been observed in clinical studies of Onbrez Breezhaler at recommended therapeutic doses (see section 5.1).

### Hypokalaemia

Beta<sub>2</sub>-adrenergic agonists may produce significant hypokalaemia in some patients, which has the potential to produce adverse cardiovascular effects. The decrease in serum potassium is usually transient, not requiring supplementation. In patients with severe COPD, hypokalaemia may be potentiated by hypoxia and concomitant treatment (see section 4.5), which may increase the susceptibility to cardiac arrhythmias.

### Hyperglycaemia

Inhalation of high doses of beta<sub>2</sub>-adrenergic agonists may produce increases in plasma glucose. Upon initiation of treatment with Onbrez Breezhaler plasma glucose should be monitored more closely in diabetic patients.

During clinical studies, clinically notable changes in blood glucose were generally more frequent by 1-2% on Onbrez Breezhaler at the recommended doses than on placebo. Onbrez Breezhaler has not been investigated in patients with not well controlled diabetes mellitus.

## **4.5 Interaction with other medicinal products and other forms of interaction**

### Sympathomimetic agents

Concomitant administration of other sympathomimetic agents (alone or as part of combination therapy) may potentiate the undesirable effects of Onbrez Breezhaler.

Onbrez Breezhaler should not be used in conjunction with other long-acting beta<sub>2</sub>-adrenergic agonists or medicinal products containing long-acting beta<sub>2</sub>-adrenergic agonists.

### Hypokalaemic treatment

Concomitant hypokalaemic treatment with methylxanthine derivatives, steroids, or non-potassium-sparing diuretics may potentiate the possible hypokalaemic effect of beta<sub>2</sub>-adrenergic agonists, therefore use with caution (see section 4.4).

### Beta-adrenergic blockers

Beta-adrenergic blockers may weaken or antagonise the effect of beta<sub>2</sub>-adrenergic agonists. Therefore indacaterol should not be given together with beta-adrenergic blockers (including eye drops) unless there are compelling reasons for their use. Where required, cardioselective beta-adrenergic blockers should be preferred, although they should be administered with caution.

### Metabolic and transporter based interactions

Inhibition of the key contributors of indacaterol clearance, CYP3A4 and P-glycoprotein (P-gp) raises the systemic exposure of indacaterol by up to two-fold. The magnitude of exposure increases due to interactions does not raise any safety concerns given the safety experience of treatment with Onbrez Breezhaler in clinical studies of up to one year at doses up to twice the maximum recommended therapeutic dose.

Indacaterol has not been shown to cause interactions with co-medications. *In vitro* investigations have indicated that indacaterol has negligible potential to cause metabolic interactions with medicinal products at the systemic exposure levels achieved in clinical practice.

#### **4.6 Fertility, pregnancy and lactation**

##### Pregnancy

There are no data from the use of indacaterol in pregnant women available. Animal studies do not indicate direct or indirect harmful effects with respect to reproductive toxicity at clinically relevant exposures (see section 5.3). Like other beta<sub>2</sub>-adrenergic agonists, indacaterol may inhibit labour due to a relaxant effect on uterine smooth muscle. Onbrez Breezhaler should only be used during pregnancy if the expected benefits outweigh the potential risks.

##### Breast-feeding

It is not known whether indacaterol/metabolites are excreted in human milk. Available pharmacokinetic/toxicological data in animals have shown excretion of indacaterol/metabolites in milk (see section 5.3). A risk to the breast-fed child cannot be excluded. A decision must be made whether to discontinue breast-feeding or to discontinue/abstain from Onbrez Breezhaler therapy, taking into account the benefit of breast-feeding for the child and the benefit of therapy for the woman.

##### Fertility

A decreased pregnancy rate has been observed in rats. Nevertheless, it is considered unlikely that indacaterol will affect reproductive or fertility performance in humans following inhalation of the maximum recommended dose (see section 5.3).

#### **4.7 Effects on ability to drive and use machines**

Onbrez Breezhaler has no or negligible influence on the ability to drive and use machines.

#### **4.8 Undesirable effects**

##### Summary of the safety profile

The most common adverse reactions at the recommended doses were nasopharyngitis (14.3%), upper respiratory tract infection (14.2%), cough (8.2%), headache (3.7%) and muscle spasms (3.5%). These were in the vast majority mild or moderate and became less frequent if treatment was continued.

At the recommended doses, the adverse reaction profile of Onbrez Breezhaler in patients with COPD shows clinically insignificant systemic effects of beta<sub>2</sub>-adrenergic stimulation. Mean heart rate changes were less than one beat per minute, and tachycardia was infrequent and reported at a similar rate as under placebo treatment. Relevant prolongations of QT<sub>c</sub>F were not detectable in comparison to placebo. The frequency of notable QT<sub>c</sub>F intervals [i.e. >450 ms (males) and >470 ms (females)] and reports of hypokalaemia were similar to placebo. The mean of the maximum changes in blood glucose were similar between Onbrez Breezhaler and placebo.

##### Tabulated summary of adverse reactions

The Onbrez Breezhaler Phase III clinical development programme involved patients with a clinical diagnosis of moderate to severe COPD. 4,764 patients were exposed to indacaterol up to one year at doses up to twice the maximum recommended dose. Of these patients, 2,611 were on treatment with 150 microgram once daily and 1,157 on treatment with 300 microgram once daily. Approximately 41% of patients had severe COPD. The mean age of patients was 64 years, with 48% of patients aged 65 years or older, and the majority (80%) was Caucasian.

Adverse reactions in Table 1 are listed according to MedDRA system organ class in the COPD safety database. Within each system organ class, adverse reactions are ranked by frequency in descending order according to the following convention (CIOMS III): Very common ( $\geq 1/10$ ); common ( $\geq 1/100$  to  $< 1/10$ ); uncommon ( $\geq 1/1,000$  to  $< 1/100$ ); rare ( $\geq 1/10,000$  to  $< 1/1,000$ ); very rare ( $< 1/10,000$ ), not known (cannot be estimated from the available data).

**Table 1 Adverse reactions**

<b>Adverse Reactions</b>	<b>Frequency category</b>
<b>Infections and infestations</b>	
Upper respiratory tract infection	Common
Nasopharyngitis	Common
Sinusitis	Common
<b>Immune system disorders</b>	
Hypersensitivity <sup>1</sup>	Uncommon
<b>Metabolism and nutrition disorders</b>	
Diabetes mellitus and hyperglycaemia	Uncommon
<b>Nervous system disorders</b>	
Headache	Common
Dizziness	Common
Paraesthesia	Uncommon
<b>Cardiac disorders</b>	
Ischaemic heart disease	Uncommon
Atrial fibrillation	Uncommon
Palpitations	Uncommon
Tachycardia	Uncommon
<b>Respiratory, thoracic and mediastinal disorders</b>	
Cough	Common
Oropharyngeal pain including throat irritation	Common
Rhinorrhoea	Common
Paradoxical bronchospasm	Uncommon
<b>Skin and subcutaneous tissue disorders</b>	
Pruritus/rash	Uncommon
<b>Musculoskeletal and connective tissue disorders</b>	
Muscle spasm	Common
Myalgia	Uncommon
Musculoskeletal pain	Uncommon
<b>General disorders and administration site conditions</b>	
Chest pain	Common
Peripheral oedema	Common

<sup>1</sup> Reports of hypersensitivity have been received from post-approval marketing experience in association with the use of Onbrez Breezhaler. These were reported voluntarily from a population of uncertain size, and it is therefore not always possible to reliably estimate the frequency or establish a causal relationship to drug exposure. Therefore the frequency was calculated from clinical trial experience.

At 600 microgram once-daily, the safety profile of Onbrez Breezhaler was overall similar to that of recommended doses. An additional adverse reaction was tremor (common).

### Description of selected adverse reactions

In Phase III clinical studies, healthcare providers observed during clinic visits that on average 17-20% of patients experienced a sporadic cough that occurred usually within 15 seconds following inhalation and typically lasted for 5 seconds (about 10 seconds in current smokers). It was observed with a higher frequency in female than in male patients and in current smokers than in ex-smokers. This cough experienced post inhalation was generally well tolerated and did not lead to any patient discontinuing from the studies at the recommended doses (cough is a symptom in COPD and only 8.2% of patients reported cough as an adverse event). There is no evidence that cough experienced post inhalation is associated with bronchospasm, exacerbations, deteriorations of disease or loss of efficacy.

### **4.9 Overdose**

In COPD patients, single doses of 10 times the maximum recommended therapeutic dose were associated with a moderate increase in pulse rate, systolic blood pressure and QT<sub>c</sub> interval.

An overdose of indacaterol is likely to lead to exaggerated effects typical of beta<sub>2</sub>-adrenergic stimulants, i.e. tachycardia, tremor, palpitations, headache, nausea, vomiting, drowsiness, ventricular arrhythmias, metabolic acidosis, hypokalaemia and hyperglycaemia.

Supportive and symptomatic treatment is indicated. In serious cases, patients should be hospitalised. Use of cardioselective beta blockers may be considered, but only under the supervision of a physician and with extreme caution since the use of beta-adrenergic blockers may provoke bronchospasm.

## **5. PHARMACOLOGICAL PROPERTIES**

### **5.1 Pharmacodynamic properties**

Pharmacotherapeutic group: Long-acting beta<sub>2</sub>-adrenergic agonist, ATC code: R03AC18

#### Mechanism of action

The pharmacological effects of beta<sub>2</sub>-adrenoceptor agonists are at least in part attributable to stimulation of intracellular adenylyl cyclase, the enzyme that catalyses the conversion of adenosine triphosphate (ATP) to cyclic-3', 5'-adenosine monophosphate (cyclic monophosphate). Increased cyclic AMP levels cause relaxation of bronchial smooth muscle. *In vitro* studies have shown that indacaterol, a long-acting beta<sub>2</sub>-adrenergic agonist, has more than 24-fold greater agonist activity at beta<sub>2</sub>-receptors compared to beta<sub>1</sub>-receptors and 20-fold greater agonist activity compared to beta<sub>3</sub>-receptors.

When inhaled, indacaterol acts locally in the lung as a bronchodilator. Indacaterol is a partial agonist at the human beta<sub>2</sub>-adrenergic receptor with nanomolar potency. In isolated human bronchus, indacaterol has a rapid onset of action and a long duration of action.

Although beta<sub>2</sub>-receptors are the predominant adrenergic receptors in bronchial smooth muscle and beta<sub>1</sub>-receptors are the predominant receptors in the human heart, there are also beta<sub>2</sub>-adrenergic receptors in the human heart comprising 10-50% of the total adrenergic receptors. The precise function of beta<sub>2</sub>-adrenergic receptors in the heart is not known, but their presence raises the possibility that even highly selective beta<sub>2</sub>-adrenergic agonists may have cardiac effects.

### Pharmacodynamic effects

Onbrez Breezhaler, administered once a day at doses of 150 and 300 microgram consistently provided clinically significant improvements in lung function (as measured by the forced expiratory volume in one second, FEV<sub>1</sub>) over 24 hours across a number of clinical pharmacodynamic and efficacy studies. There was a rapid onset of action within 5 minutes after inhalation, with an increase in FEV<sub>1</sub> relative to baseline of 110-160 ml, comparable to the effect of the fast-acting beta<sub>2</sub>-agonist salbutamol 200 microgram and statistically significantly faster compared to salmeterol/fluticasone 50/500 microgram. Mean peak improvements in FEV<sub>1</sub> relative to baseline were 250-330 ml at steady state.

The bronchodilator effect did not depend on the time of dosing, morning or evening.

Onbrez Breezhaler was shown to reduce lung hyperinflation, resulting in increased inspiratory capacity during exercise and at rest, compared to placebo.

### Effects on cardiac electrophysiology

A double-blind, placebo- and active (moxifloxacin)-controlled study for 2 weeks in 404 healthy volunteers demonstrated maximum mean (90% confidence intervals) prolongations of the QT<sub>c</sub>F interval (in milliseconds) of 2.66 (0.55, 4.77) 2.98 (1.02, 4.93) and 3.34 (0.86, 5.82) following multiple doses of 150 microgram, 300 microgram and 600 microgram, respectively. Therefore, this shows no concern for a pro-arrhythmic potential related to QT-interval prolongations at recommended therapeutic doses or at twice the maximum recommended dose. There was no evidence of a concentration-delta QT<sub>c</sub> relationship in the range of doses evaluated.

As demonstrated in 605 patients with COPD in a 26-week, double-blind, placebo-controlled Phase III study, there was no clinically relevant difference in the development of arrhythmic events monitored over 24 hours, at baseline and up to 3 times during the 26-week treatment period, between patients receiving recommended doses of Onbrez Breezhaler treatment and those patients who received placebo or treatment with tiotropium.

### Clinical efficacy and safety

The clinical development programme included one 12-week, two six-month (one of which was extended to one year to evaluate safety and tolerability) and one one-year randomised controlled studies in patients with a clinical diagnosis of COPD. These studies included measures of lung function and of health outcomes such as dyspnoea, exacerbations and health-related quality of life.

### Lung function

Onbrez Breezhaler, administered once a day at doses of 150 microgram and 300 microgram, showed clinically meaningful improvements in lung function. At the 12-week primary endpoint (24-hour trough FEV<sub>1</sub>), the 150 microgram dose resulted in a 130-180 ml increase compared to placebo (p<0.001) and a 60 ml increase compared to salmeterol 50 microgram twice a day (p<0.001). The 300 microgram dose resulted in a 170-180 ml increase compared to placebo (p<0.001) and a 100 ml increase compared to formoterol 12 microgram twice a day (p<0.001). Both doses resulted in an increase of 40-50 ml over open-label tiotropium 18 microgram once a day (150 microgram, p=0.004; 300 microgram, p=0.01). The 24-hour bronchodilator effect of Onbrez Breezhaler was maintained from the first dose throughout a one-year treatment period with no evidence of loss in efficacy (tachyphylaxis).

### Symptomatic benefits

Both doses demonstrated statistically significant improvements in symptom relief over placebo for dyspnoea and health status (as evaluated by Transitional Dyspnoea Index [TDI] and St. George's Respiratory Questionnaire [SGRQ], respectively). The magnitude of response was generally greater than seen with active comparators (Table 2). In addition, patients treated with Onbrez Breezhaler required significantly less rescue medication, had more days when no rescue medication was needed compared to placebo and had a significantly improved percentage of days with no daytime symptoms.



Pooled efficacy analysis over 6 months' treatment demonstrated that the rate of COPD exacerbations was statistically significantly lower than the placebo rate. Treatment comparison compared to placebo showed a ratio of rates of 0.68 (95% CI [0.47, 0.98]; p-value 0.036) and 0.74 (95% CI [0.56, 0.96]; p-value 0.026) for 150 microgram and 300 microgram, respectively.

Limited treatment experience is available in individuals of African descent.

**Table 2 Symptom relief at 6 months treatment duration**

<b>Treatment Dose (microgram)</b>	<b>Indacaterol 150 once a day</b>	<b>Indacaterol 300 once a day</b>	<b>Tiotropium 18 once a day</b>	<b>Salmeterol 50 twice a day</b>	<b>Formoterol 12 twice a day</b>	<b>Placebo</b>
<b>Percentage of patients who achieved MCID TDI<sup>†</sup></b>	57 <sup>a</sup> 62 <sup>b</sup>	71 <sup>b</sup> 59 <sup>c</sup>	57 <sup>b</sup>	54 <sup>a</sup>	54 <sup>c</sup>	45 <sup>a</sup> 47 <sup>b</sup> 41 <sup>c</sup>
<b>Percentage of patients who achieved MCID SGRQ<sup>†</sup></b>	53 <sup>a</sup> 58 <sup>b</sup>	53 <sup>b</sup> 55 <sup>c</sup>	47 <sup>b</sup>	49 <sup>a</sup>	51 <sup>c</sup>	38 <sup>a</sup> 46 <sup>b</sup> 40 <sup>c</sup>
<b>Reduction in puffs/day of rescue medication use vs. baseline</b>	1.3 <sup>a</sup> 1.5 <sup>b</sup>	1.6 <sup>b</sup>	1.0 <sup>b</sup>	1.2 <sup>a</sup>	n/e	0.3 <sup>a</sup> 0.4 <sup>b</sup>
<b>Percentage of days with no rescue medication use</b>	60 <sup>a</sup> 57 <sup>b</sup>	58 <sup>b</sup>	46 <sup>b</sup>	55 <sup>a</sup>	n/e	42 <sup>a</sup> 42 <sup>b</sup>

Study design with <sup>a</sup>: indacaterol 150 microgram, salmeterol and placebo; <sup>b</sup>: indacaterol 150 and 300 microgram, tiotropium and placebo; <sup>c</sup>: indacaterol 300 microgram, formoterol and placebo  
<sup>†</sup> MCID = minimal clinically important difference ( $\geq 1$  point change in TDI,  $\geq 4$  point change in SGRQ)

n/e= not evaluated at six months

### Paediatric population

The European Medicines Agency has waived the obligation to submit the results of studies with Onbrez Breezhaler in all subsets of the paediatric population in chronic obstructive pulmonary disease (COPD) (see section 4.2 for information on paediatric use).

## **5.2 Pharmacokinetic properties**

Indacaterol is a chiral molecule with R-configuration.

Pharmacokinetic data were obtained from a number of clinical studies, from healthy volunteers and COPD patients.

### Absorption

The median time to reach peak serum concentrations of indacaterol was approximately 15 min after single or repeated inhaled doses. Systemic exposure to indacaterol increased with increasing dose (150 microgram to 600 microgram) in a dose proportional manner. Absolute bioavailability of indacaterol after an inhaled dose was on average 43% to 45%. Systemic exposure results from a composite of pulmonary and gastrointestinal absorption; about 75% of systemic exposure was from pulmonary absorption and about 25% from gastrointestinal absorption.

Indacaterol serum concentrations increased with repeated once-daily administration. Steady state was achieved within 12 to 14 days. The mean accumulation ratio of indacaterol, i.e. AUC over the 24-h dosing interval on Day 14 compared to Day 1, was in the range of 2.9 to 3.5 for once-daily inhaled doses between 150 microgram and 600 microgram.

#### Distribution

After intravenous infusion the volume of distribution of indacaterol during the terminal elimination phase was 2557 litres indicating an extensive distribution. The *in vitro* human serum and plasma protein binding was 94.1-95.3% and 95.1-96.2%, respectively.

#### Biotransformation

After oral administration of radiolabelled indacaterol in a human ADME (absorption, distribution, metabolism, excretion) study, unchanged indacaterol was the main component in serum, accounting for about one third of total drug-related AUC over 24 hours. A hydroxylated derivative was the most prominent metabolite in serum. Phenolic O-glucuronides of indacaterol and hydroxylated indacaterol were further prominent metabolites. A diastereomer of the hydroxylated derivative, a N-glucuronide of indacaterol, and C- and N-dealkylated products were further metabolites identified.

*In vitro* investigations indicated that UGT1A1 is the only UGT isoform that metabolised indacaterol to the phenolic O-glucuronide. The oxidative metabolites were found in incubations with recombinant CYP1A1, CYP2D6, and CYP3A4. CYP3A4 is concluded to be the predominant isoenzyme responsible for hydroxylation of indacaterol. *In vitro* investigations further indicated that indacaterol is a low affinity substrate for the efflux pump P-gp.

#### Elimination

In clinical studies which included urine collection, the amount of indacaterol excreted unchanged via urine was generally lower than 2% of the dose. Renal clearance of indacaterol was, on average, between 0.46 and 1.20 litres/hour. When compared with the serum clearance of indacaterol of 23.3 litres/hour, it is evident that renal clearance plays a minor role (about 2 to 5% of systemic clearance) in the elimination of systemically available indacaterol.

In a human ADME study where indacaterol was given orally, the faecal route of excretion was dominant over the urinary route. Indacaterol was excreted into human faeces primarily as unchanged parent substance (54% of the dose) and, to a lesser extent, hydroxylated indacaterol metabolites (23% of the dose). Mass balance was complete with  $\geq 90\%$  of the dose recovered in the excreta.

Indacaterol serum concentrations declined in a multi-phasic manner with an average terminal half-life ranging from 45.5 to 126 hours. The effective half-life, calculated from the accumulation of indacaterol after repeated dosing ranged from 40 to 52 hours which is consistent with the observed time-to-steady state of approximately 12-14 days.

#### Special populations

A population pharmacokinetic analysis showed that there is no clinically relevant effect of age (adults up to 88 years), sex, weight (32-168 kg) or race on the pharmacokinetics of indacaterol. It did not suggest any difference between ethnic subgroups in this population.

Patients with mild and moderate hepatic impairment showed no relevant changes in  $C_{max}$  or AUC of indacaterol, nor did protein binding differ between mild and moderate hepatic impaired subjects and their healthy controls. Studies in subjects with severe hepatic impairment were not performed.

Due to the very low contribution of the urinary pathway to total body elimination, a study in renally impaired subjects was not performed.

### **5.3 Preclinical safety data**

Effects on the cardiovascular system attributable to the beta<sub>2</sub>-agonistic properties of indacaterol included tachycardia, arrhythmias and myocardial lesions in dogs. Mild irritancy of the nasal cavity and larynx were seen in rodents. All these findings occurred at exposures sufficiently in excess of those anticipated in humans.

Although indacaterol did not affect general reproductive performance in a rat fertility study, a decrease in the number of pregnant F<sub>1</sub> offspring was observed in the peri- and post-developmental rat study at an exposure 14-fold higher than in humans treated with Onbrez Breezhaler. Indacaterol was not embryotoxic or teratogenic in rats or rabbits.

Genotoxicity studies did not reveal any mutagenic or clastogenic potential. Carcinogenicity was assessed in a two-year rat study and a six-month transgenic mouse study. Increased incidences of benign ovarian leiomyoma and focal hyperplasia of ovarian smooth muscle in rats were consistent with similar findings reported for other beta<sub>2</sub>-adrenergic agonists. No evidence of carcinogenicity was seen in mice. Systemic exposures (AUC) in rats and mice at the no-observed adverse effect levels in these studies were at least 7- and 49-fold higher, respectively, than in humans treated with Onbrez Breezhaler once a day at a dose of 300 microgram.

## **6. PHARMACEUTICAL PARTICULARS**

### **6.1 List of excipients**

#### Capsule content

Lactose monohydrate

#### Capsule shell

Gelatin

### **6.2 Incompatibilities**

Not applicable.

### **6.3 Shelf life**

2 years.

### **6.4 Special precautions for storage**

Do not store above 30°C.

Onbrez Breezhaler capsules must always be stored in the blister to protect from moisture and only removed immediately before use.

## 6.5 Nature and contents of container

Onbrez Breezhaler is a single-dose inhalation device. Inhaler body and cap are made from acrylonitrile butadiene styrene, push buttons are made from methyl methacrylate acrylonitrile butadiene styrene. Needles and springs are made from stainless steel.

PA/Alu/PVC - Alu blister packs, containing 10 hard capsules, with an inhaler made from plastic materials provided in each pack.

Carton containing 10 capsules (1x10 capsule blister strips) and one Onbrez Breezhaler inhaler.  
Carton containing 30 capsules (3x10 capsule blister strips) and one Onbrez Breezhaler inhaler.



Multipack comprising 2 packs (each containing 30 capsules and 1 inhaler).  
Multipack comprising 3 packs (each containing 30 capsules and 1 inhaler).  
Multipack comprising 30 packs (each containing 10 capsules and 1 inhaler).

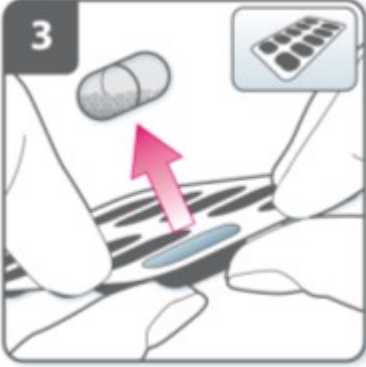
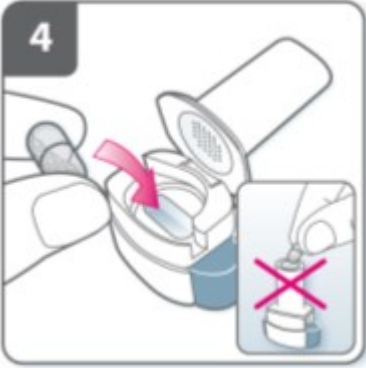

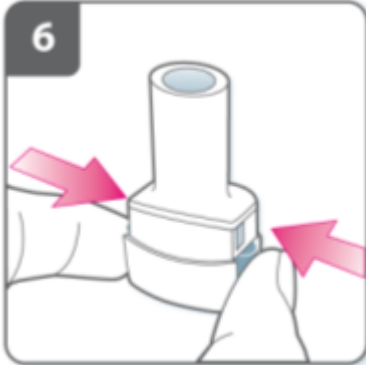
Not all pack sizes may be marketed.



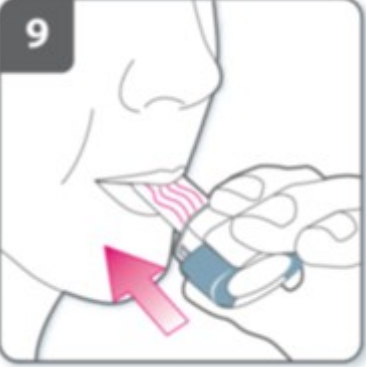
## 6.6 Special precautions for disposal and other handling

The Onbrez Breezhaler inhaler provided with each new prescription should be used. Dispose of each inhaler after 30 days of use.

### Instructions for handling and use

	<b>Pull off the cap.</b>
	<b>Open inhaler:</b> Hold the base of the inhaler firmly and tilt the mouthpiece. This opens the inhaler.

	<p><b>Prepare capsule:</b>  <b>Immediately before use</b>, with dry hands, remove one capsule from the blister.</p>
	<p><b>Insert capsule:</b>  Place the capsule into the capsule chamber.</p> <p><b>Never place a capsule directly into the mouthpiece.</b></p>
	<p><b>Close the inhaler:</b>  Close the inhaler until you hear a “click”.</p>
	<p><b>Pierce the capsule:</b></p> <ul style="list-style-type: none"> <li>• Hold the inhaler upright with the mouthpiece pointing up.</li> <li>• Pierce the capsule by firmly pressing together both side buttons at the same time. <b>Do this only once.</b></li> <li>• You should hear a “click” as the capsule is being pierced.</li> </ul>

	<p><b>Release the side buttons fully.</b></p>
	<p><b>Breathe out:</b> Before placing the mouthpiece in your mouth, breathe out fully.</p> <p><b>Do not blow into the mouthpiece.</b></p>
	<p><b>Inhale the medicine</b> To breathe the medicine deeply into your airways:</p> <ul style="list-style-type: none"> <li>• Hold the inhaler as shown in the picture. The side buttons should be facing left and right. Do not press the side buttons.</li> <li>• Place the mouthpiece in your mouth and close your lips firmly around it.</li> <li>• Breathe in rapidly but steadily and as deeply as you can.</li> </ul>

**Note:**

As you breathe in through the inhaler, the capsule spins around in the chamber and you should hear a whirring noise. You will experience a sweet flavour as the medicine goes into your lungs.

**Additional information**

Occasionally, very small pieces of the capsule can get past the screen and enter your mouth. If this happens, you may be able to feel these pieces on your tongue. It is not harmful if these pieces are swallowed or inhaled. The chances of the capsule shattering will be increased if the capsule is accidentally pierced more than once (step 6).

**If you do not hear a whirring noise:**

The capsule may be stuck in the capsule chamber. If this happens:

- Open the inhaler and carefully loosen the capsule by tapping the base of the inhaler. Do not press the side buttons.
- Inhale the medicine again by repeating steps 8 and 9.

**Hold breath:**

After you have inhaled the medicine:

- Hold your breath for at least 5-10 seconds or as long as you comfortably can while taking the inhaler out of your mouth.
- Then breathe out.
- Open the inhaler to see if any powder is left in the capsule.

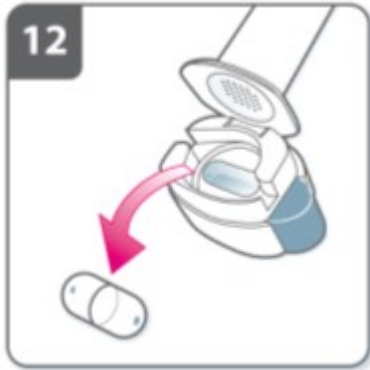

**If there is powder left in the capsule:**

- Close the inhaler.
- Repeat steps 8, 9, 10 and 11.

Most people are able to empty the capsule with one or two inhalations.

**Additional information**

Some people may occasionally cough briefly soon after inhaling the medicine. If you do, don't worry. As long as the capsule is empty, you have received enough of your medicine.

	<p><b>After you have finished taking</b> your medicine:</p> <ul style="list-style-type: none"> <li>• Open the mouthpiece again, and remove the empty capsule by tipping it out of the capsule chamber. Put the empty capsule in your household waste.</li> <li>• Close the inhaler and replace the cap.</li> </ul> <p><b>Do not store the capsules in the Onbrez Breezhaler inhaler.</b></p>
	<p><b>Mark daily dose tracker:</b> On the inside of the pack there is a daily dose tracker. Put a mark in today's box if it helps to remind you of when your next dose is due.</p>

## 7. MARKETING AUTHORISATION HOLDER

Novartis Europharm Limited  
Wimblehurst Road  
Horsham  
West Sussex, RH12 5AB  
United Kingdom

## 8. MARKETING AUTHORISATION NUMBER(S)

EU/1/09/593/001-005

## 9. DATE OF FIRST AUTHORISATION/RENEWAL OF THE AUTHORISATION

30.11.2009

## 10. DATE OF REVISION OF THE TEXT

Detailed information on this medicinal product is available on the website of the European Medicines Agency <http://www.ema.europa.eu>



## 1. NAME OF THE MEDICINAL PRODUCT

Onbrez Breezhaler 300 microgram inhalation powder, hard capsules

## 2. QUALITATIVE AND QUANTITATIVE COMPOSITION

Each capsule contains indacaterol maleate equivalent to 300 microgram indacaterol.

The delivered dose leaving the mouthpiece of the Onbrez Breezhaler inhaler is indacaterol maleate equivalent to 240 microgram indacaterol.

Excipients:

Each capsule contains 24.6 mg lactose.

For the full list of excipients, see section 6.1.

## 3. PHARMACEUTICAL FORM

Inhalation powder, hard capsule

Clear colourless capsules containing a white powder, with “IDL 300” printed in blue above and company logo (ℓ) printed in blue below a blue bar.

## 4. CLINICAL PARTICULARS

### 4.1 Therapeutic indications

Onbrez Breezhaler is indicated for maintenance bronchodilator treatment of airflow obstruction in adult patients with chronic obstructive pulmonary disease (COPD).

### 4.2 Posology and method of administration

#### Posology

The recommended dose is the inhalation of the content of one 150 microgram capsule once a day, using the Onbrez Breezhaler inhaler. The dose should only be increased on medical advice.

The inhalation of the content of one 300 microgram capsule once a day, using the Onbrez Breezhaler inhaler has been shown to provide additional clinical benefit with regard to breathlessness, particularly for patients with severe COPD. The maximum dose is 300 microgram once daily.

Onbrez Breezhaler should be administered at the same time of the day each day.

If a dose is missed the next dose should be taken at the usual time the next day.

#### Elderly population

Maximum plasma concentration and overall systemic exposure increase with age but no dose adjustment is required in elderly patients.

#### Paediatric population

There is no relevant use of Onbrez Breezhaler in the paediatric population (under 18 years).

#### Hepatic impairment

No dose adjustment is required for patients with mild and moderate hepatic impairment. There are no data available for use of Onbrez Breezhaler in patients with severe hepatic impairment.

#### Renal impairment

No dose adjustment is required for patients with renal impairment.

#### Method of administration

For inhalation use only.

Onbrez Breezhaler capsules must be administered only using the Onbrez Breezhaler inhaler (see section 6.6).

Onbrez Breezhaler capsules must not be swallowed.

### **4.3 Contraindications**

Hypersensitivity to the active substance, to lactose or to any of the other excipients listed in section 6.1.

### **4.4 Special warnings and precautions for use**

#### Asthma

Onbrez Breezhaler is a long-acting beta<sub>2</sub>-adrenergic agonist, which is only indicated for COPD and should not be used in asthma due to the absence of long-term outcome data in asthma.

Long-acting beta<sub>2</sub>-adrenergic agonists may increase the risk of asthma-related serious adverse events, including asthma-related deaths, when used for the treatment of asthma.

#### Hypersensitivity

Immediate hypersensitivity reactions have been reported after administration of Onbrez Breezhaler. If signs suggesting allergic reactions (in particular, difficulties in breathing or swallowing, swelling of tongue, lips and face, urticaria, skin rash) occur, Onbrez Breezhaler should be discontinued immediately and alternative therapy instituted.

#### Paradoxical bronchospasm

As with other inhalation therapy, administration of Onbrez Breezhaler may result in paradoxical bronchospasm that may be life-threatening. If paradoxical bronchospasm occurs Onbrez Breezhaler should be discontinued immediately and alternative therapy substituted.

#### Deterioration of disease

Onbrez Breezhaler is not indicated for the treatment of acute episodes of bronchospasm, i.e. as rescue therapy. In the event of deterioration of COPD during treatment with Onbrez Breezhaler, a re-evaluation of the patient and of the COPD treatment regimen should be undertaken. An increase in the daily dose of Onbrez Breezhaler beyond the maximum dose of 300 microgram is not appropriate.

#### Systemic effects

Although no clinically relevant effect on the cardiovascular system is usually seen after the administration of Onbrez Breezhaler at the recommended doses, as with other beta<sub>2</sub>-adrenergic agonists, indacaterol should be used with caution in patients with cardiovascular disorders (coronary artery disease, acute myocardial infarction, cardiac arrhythmias, hypertension), in patients with convulsive disorders or thyrotoxicosis, and in patients who are unusually responsive to beta<sub>2</sub>-adrenergic agonists.

### Cardiovascular effects

Like other beta<sub>2</sub>-adrenergic agonists, indacaterol may produce a clinically significant cardiovascular effect in some patients as measured by increases in pulse rate, blood pressure, and/or symptoms. In case such effects occur, treatment may need to be discontinued. In addition, beta-adrenergic agonists have been reported to produce electrocardiogram (ECG) changes, such as flattening of the T wave, prolongation of QT interval and ST segment depression, although the clinical significance of these observations is unknown. Therefore, long-acting beta<sub>2</sub>-adrenergic agonists such as Onbrez Breezhaler should be used with caution in patients with known or suspected prolongation of the QT interval or treated with medicinal products affecting the QT interval.

Clinically relevant effects on prolongation of the QT<sub>c</sub>-interval have not been observed in clinical studies of Onbrez Breezhaler at recommended therapeutic doses (see section 5.1).

### Hypokalaemia

Beta<sub>2</sub>-adrenergic agonists may produce significant hypokalaemia in some patients, which has the potential to produce adverse cardiovascular effects. The decrease in serum potassium is usually transient, not requiring supplementation. In patients with severe COPD, hypokalaemia may be potentiated by hypoxia and concomitant treatment (see section 4.5), which may increase the susceptibility to cardiac arrhythmias.

### Hyperglycaemia

Inhalation of high doses of beta<sub>2</sub>-adrenergic agonists may produce increases in plasma glucose. Upon initiation of treatment with Onbrez Breezhaler plasma glucose should be monitored more closely in diabetic patients.

During clinical studies, clinically notable changes in blood glucose were generally more frequent by 1-2% on Onbrez Breezhaler at the recommended doses than on placebo. Onbrez Breezhaler has not been investigated in patients with not well controlled diabetes mellitus.

## **4.5 Interaction with other medicinal products and other forms of interaction**

### Sympathomimetic agents

Concomitant administration of other sympathomimetic agents (alone or as part of combination therapy) may potentiate the undesirable effects of Onbrez Breezhaler.

Onbrez Breezhaler should not be used in conjunction with other long-acting beta<sub>2</sub>-adrenergic agonists or medicinal products containing long-acting beta<sub>2</sub>-adrenergic agonists.

### Hypokalaemic treatment

Concomitant hypokalaemic treatment with methylxanthine derivatives, steroids, or non-potassium-sparing diuretics may potentiate the possible hypokalaemic effect of beta<sub>2</sub>-adrenergic agonists, therefore use with caution (see section 4.4).

### Beta-adrenergic blockers

Beta-adrenergic blockers may weaken or antagonise the effect of beta<sub>2</sub>-adrenergic agonists. Therefore indacaterol should not be given together with beta-adrenergic blockers (including eye drops) unless there are compelling reasons for their use. Where required, cardioselective beta-adrenergic blockers should be preferred, although they should be administered with caution.

### Metabolic and transporter based interactions

Inhibition of the key contributors of indacaterol clearance, CYP3A4 and P-glycoprotein (P-gp) raises the systemic exposure of indacaterol by up to two-fold. The magnitude of exposure increases due to interactions does not raise any safety concerns given the safety experience of treatment with Onbrez Breezhaler in clinical studies of up to one year at doses up to twice the maximum recommended therapeutic dose.

Indacaterol has not been shown to cause interactions with co-medications. *In vitro* investigations have indicated that indacaterol has negligible potential to cause metabolic interactions with medicinal products at the systemic exposure levels achieved in clinical practice.

#### **4.6 Fertility, pregnancy and lactation**

##### Pregnancy

There are no data from the use of indacaterol in pregnant women available. Animal studies do not indicate direct or indirect harmful effects with respect to reproductive toxicity at clinically relevant exposures (see section 5.3). Like other beta<sub>2</sub>-adrenergic agonists, indacaterol may inhibit labour due to a relaxant effect on uterine smooth muscle. Onbrez Breezhaler should only be used during pregnancy if the expected benefits outweigh the potential risks.

##### Breast-feeding

It is not known whether indacaterol/metabolites are excreted in human milk. Available pharmacokinetic/toxicological data in animals have shown excretion of indacaterol/metabolites in milk (see section 5.3). A risk to the breast-fed child cannot be excluded. A decision must be made whether to discontinue breast-feeding or to discontinue/abstain from Onbrez Breezhaler therapy, taking into account the benefit of breast-feeding for the child and the benefit of therapy for the woman.

##### Fertility

A decreased pregnancy rate has been observed in rats. Nevertheless, it is considered unlikely that indacaterol will affect reproductive or fertility performance in humans following inhalation of the maximum recommended dose (see section 5.3).

#### **4.7 Effects on ability to drive and use machines**

Onbrez Breezhaler has no or negligible influence on the ability to drive and use machines.

#### **4.8 Undesirable effects**

##### Summary of the safety profile

The most common adverse reactions at the recommended doses were nasopharyngitis (14.3%), upper respiratory tract infection (14.2%), cough (8.2%), headache (3.7%) and muscle spasms (3.5%). These were in the vast majority mild or moderate and became less frequent if treatment was continued.

At the recommended doses, the adverse reaction profile of Onbrez Breezhaler in patients with COPD shows clinically insignificant systemic effects of beta<sub>2</sub>-adrenergic stimulation. Mean heart rate changes were less than one beat per minute, and tachycardia was infrequent and reported at a similar rate as under placebo treatment. Relevant prolongations of QT<sub>c</sub>F were not detectable in comparison to placebo. The frequency of notable QT<sub>c</sub>F intervals [i.e. >450 ms (males) and >470 ms (females)] and reports of hypokalaemia were similar to placebo. The mean of the maximum changes in blood glucose were similar between Onbrez Breezhaler and placebo.

##### Tabulated summary of adverse reactions

The Onbrez Breezhaler Phase III clinical development programme involved patients with a clinical diagnosis of moderate to severe COPD. 4,764 patients were exposed to indacaterol up to one year at doses up to twice the maximum recommended dose. Of these patients, 2,611 were on treatment with 150 microgram once daily and 1,157 on treatment with 300 microgram once daily. Approximately 41% of patients had severe COPD. The mean age of patients was 64 years, with 48% of patients aged 65 years or older, and the majority (80%) was Caucasian.

Adverse reactions in Table 1 are listed according to MedDRA system organ class in the COPD safety database. Within each system organ class, adverse reactions are ranked by frequency in descending order according to the following convention (CIOMS III): Very common ( $\geq 1/10$ ); common ( $\geq 1/100$  to  $< 1/10$ ); uncommon ( $\geq 1/1,000$  to  $< 1/100$ ); rare ( $\geq 1/10,000$  to  $< 1/1,000$ ); very rare ( $< 1/10,000$ ), not known (cannot be estimated from the available data).

**Table 1 Adverse reactions**

<b>Adverse Reactions</b>	<b>Frequency category</b>
<b>Infections and infestations</b>	
Nasopharyngitis	Very common
Upper respiratory tract infection	Very common
Sinusitis	Common
<b>Immune system disorders</b>	
Hypersensitivity <sup>1</sup>	Uncommon
<b>Metabolism and nutrition disorders</b>	
Diabetes mellitus and hyperglycaemia	Common
<b>Nervous system disorders</b>	
Headache	Common
Dizziness	Common
Paraesthesia	Uncommon
<b>Cardiac disorders</b>	
Ischaemic heart disease	Common
Palpitations	Common
Atrial fibrillation	Uncommon
Tachycardia	Uncommon
<b>Respiratory, thoracic and mediastinal disorders</b>	
Cough	Common
Oropharyngeal pain including throat irritation	Common
Rhinorrhoea	Common
Paradoxical bronchospasm	Uncommon
<b>Skin and subcutaneous tissue disorders</b>	
Pruritus/rash	Common
<b>Musculoskeletal and connective tissue disorders</b>	
Muscle spasm	Common
Musculoskeletal pain	Common
Myalgia	Uncommon
<b>General disorders and administration site conditions</b>	
Chest pain	Common
Peripheral oedema	Common

<sup>1</sup> Reports of hypersensitivity have been received from post-approval marketing experience in association with the use of Onbrez Breezhaler. These were reported voluntarily from a population of uncertain size, and it is therefore not always possible to reliably estimate the frequency or establish a causal relationship to drug exposure. Therefore the frequency was calculated from clinical trial experience.

At 600 microgram once-daily, the safety profile of Onbrez Breezhaler was overall similar to that of recommended doses. An additional adverse reaction was tremor (common).

### Description of selected adverse reactions

In Phase III clinical studies, healthcare providers observed during clinic visits that on average 17-20% of patients experienced a sporadic cough that occurred usually within 15 seconds following inhalation and typically lasted for 5 seconds (about 10 seconds in current smokers). It was observed with a higher frequency in female than in male patients and in current smokers than in ex-smokers. This cough experienced post inhalation was generally well tolerated and did not lead to any patient discontinuing from the studies at the recommended doses (cough is a symptom in COPD and only 8.2% of patients reported cough as an adverse event). There is no evidence that cough experienced post inhalation is associated with bronchospasm, exacerbations, deteriorations of disease or loss of efficacy.

## **4.9 Overdose**

In COPD patients, single doses of 10 times the maximum recommended therapeutic dose were associated with a moderate increase in pulse rate, systolic blood pressure and QT<sub>c</sub> interval.

An overdose of indacaterol is likely to lead to exaggerated effects typical of beta<sub>2</sub>-adrenergic stimulants, i.e. tachycardia, tremor, palpitations, headache, nausea, vomiting, drowsiness, ventricular arrhythmias, metabolic acidosis, hypokalaemia and hyperglycaemia.

Supportive and symptomatic treatment is indicated. In serious cases, patients should be hospitalised. Use of cardioselective beta blockers may be considered, but only under the supervision of a physician and with extreme caution since the use of beta-adrenergic blockers may provoke bronchospasm.

## **5. PHARMACOLOGICAL PROPERTIES**

### **5.1 Pharmacodynamic properties**

Pharmacotherapeutic group: Long-acting beta<sub>2</sub>-adrenergic agonist, ATC code: R03AC18

#### Mechanism of action

The pharmacological effects of beta<sub>2</sub>-adrenoceptor agonists are at least in part attributable to stimulation of intracellular adenylyl cyclase, the enzyme that catalyses the conversion of adenosine triphosphate (ATP) to cyclic-3', 5'-adenosine monophosphate (cyclic monophosphate). Increased cyclic AMP levels cause relaxation of bronchial smooth muscle. *In vitro* studies have shown that indacaterol, a long-acting beta<sub>2</sub>-adrenergic agonist, has more than 24-fold greater agonist activity at beta<sub>2</sub>-receptors compared to beta<sub>1</sub>-receptors and 20-fold greater agonist activity compared to beta<sub>3</sub>-receptors.

When inhaled, indacaterol acts locally in the lung as a bronchodilator. Indacaterol is a partial agonist at the human beta<sub>2</sub>-adrenergic receptor with nanomolar potency. In isolated human bronchus, indacaterol has a rapid onset of action and a long duration of action.

Although beta<sub>2</sub>-receptors are the predominant adrenergic receptors in bronchial smooth muscle and beta<sub>1</sub>-receptors are the predominant receptors in the human heart, there are also beta<sub>2</sub>-adrenergic receptors in the human heart comprising 10-50% of the total adrenergic receptors. The precise function of beta<sub>2</sub>-adrenergic receptors in the heart is not known, but their presence raises the possibility that even highly selective beta<sub>2</sub>-adrenergic agonists may have cardiac effects.

### Pharmacodynamic effects

Onbrez Breezhaler, administered once a day at doses of 150 and 300 microgram consistently provided clinically significant improvements in lung function (as measured by the forced expiratory volume in one second, FEV<sub>1</sub>) over 24 hours across a number of clinical pharmacodynamic and efficacy studies. There was a rapid onset of action within 5 minutes after inhalation, with an increase in FEV<sub>1</sub> relative to baseline of 110-160 ml, comparable to the effect of the fast-acting beta<sub>2</sub>-agonist salbutamol 200 microgram and statistically significantly faster compared to salmeterol/fluticasone 50/500 microgram. Mean peak improvements in FEV<sub>1</sub> relative to baseline were 250-330 ml at steady state.

The bronchodilator effect did not depend on the time of dosing, morning or evening.

Onbrez Breezhaler was shown to reduce lung hyperinflation, resulting in increased inspiratory capacity during exercise and at rest, compared to placebo.

### Effects on cardiac electrophysiology

A double-blind, placebo- and active (moxifloxacin)-controlled study for 2 weeks in 404 healthy volunteers demonstrated maximum mean (90% confidence intervals) prolongations of the QT<sub>c</sub>F interval (in milliseconds) of 2.66 (0.55, 4.77) 2.98 (1.02, 4.93) and 3.34 (0.86, 5.82) following multiple doses of 150 microgram, 300 microgram and 600 microgram, respectively. Therefore, this shows no concern for a pro-arrhythmic potential related to QT-interval prolongations at recommended therapeutic doses or at twice the maximum recommended dose. There was no evidence of a concentration-delta QT<sub>c</sub> relationship in the range of doses evaluated.

As demonstrated in 605 patients with COPD in a 26-week, double-blind, placebo-controlled Phase III study, there was no clinically relevant difference in the development of arrhythmic events monitored over 24 hours, at baseline and up to 3 times during the 26-week treatment period, between patients receiving recommended doses of Onbrez Breezhaler treatment and those patients who received placebo or treatment with tiotropium.

### Clinical efficacy and safety

The clinical development programme included one 12-week, two six-month (one of which was extended to one year to evaluate safety and tolerability) and one one-year randomised controlled studies in patients with a clinical diagnosis of COPD. These studies included measures of lung function and of health outcomes such as dyspnoea, exacerbations and health-related quality of life.

### Lung function

Onbrez Breezhaler, administered once a day at doses of 150 microgram and 300 microgram, showed clinically meaningful improvements in lung function. At the 12-week primary endpoint (24-hour trough FEV<sub>1</sub>), the 150 microgram dose resulted in a 130-180 ml increase compared to placebo (p<0.001) and a 60 ml increase compared to salmeterol 50 microgram twice a day (p<0.001). The 300 microgram dose resulted in a 170-180 ml increase compared to placebo (p<0.001) and a 100 ml increase compared to formoterol 12 microgram twice a day (p<0.001). Both doses resulted in an increase of 40-50 ml over open-label tiotropium 18 microgram once a day (150 microgram, p=0.004; 300 microgram, p=0.01). The 24-hour bronchodilator effect of Onbrez Breezhaler was maintained from the first dose throughout a one-year treatment period with no evidence of loss in efficacy (tachyphylaxis).

### Symptomatic benefits

Both doses demonstrated statistically significant improvements in symptom relief over placebo for dyspnoea and health status (as evaluated by Transitional Dyspnoea Index [TDI] and St. George's Respiratory Questionnaire [SGRQ], respectively). The magnitude of response was generally greater than seen with active comparators (Table 2). In addition, patients treated with Onbrez Breezhaler required significantly less rescue medication, had more days when no rescue medication was needed compared to placebo and had a significantly improved percentage of days with no daytime symptoms.

Pooled efficacy analysis over 6 months' treatment demonstrated that the rate of COPD exacerbations was statistically significantly lower than the placebo rate. Treatment comparison compared to placebo showed a ratio of rates of 0.68 (95% CI [0.47, 0.98]; p-value 0.036) and 0.74 (95% CI [0.56, 0.96]; p-value 0.026) for 150 microgram and 300 microgram, respectively.

Limited treatment experience is available in individuals of African descent.

**Table 2 Symptom relief at 6 months treatment duration**

<b>Treatment Dose (microgram)</b>	<b>Indacaterol 150 once a day</b>	<b>Indacaterol 300 once a day</b>	<b>Tiotropium 18 once a day</b>	<b>Salmeterol 50 twice a day</b>	<b>Formoterol 12 twice a day</b>	<b>Placebo</b>
<b>Percentage of patients who achieved MCID TDI<sup>†</sup></b>	57 <sup>a</sup> 62 <sup>b</sup>	71 <sup>b</sup> 59 <sup>c</sup>	57 <sup>b</sup>	54 <sup>a</sup>	54 <sup>c</sup>	45 <sup>a</sup> 47 <sup>b</sup> 41 <sup>c</sup>
<b>Percentage of patients who achieved MCID SGRQ<sup>†</sup></b>	53 <sup>a</sup> 58 <sup>b</sup>	53 <sup>b</sup> 55 <sup>c</sup>	47 <sup>b</sup>	49 <sup>a</sup>	51 <sup>c</sup>	38 <sup>a</sup> 46 <sup>b</sup> 40 <sup>c</sup>
<b>Reduction in puffs/day of rescue medication use vs. baseline</b>	1.3 <sup>a</sup> 1.5 <sup>b</sup>	1.6 <sup>b</sup>	1.0 <sup>b</sup>	1.2 <sup>a</sup>	n/e	0.3 <sup>a</sup> 0.4 <sup>b</sup>
<b>Percentage of days with no rescue medication use</b>	60 <sup>a</sup> 57 <sup>b</sup>	58 <sup>b</sup>	46 <sup>b</sup>	55 <sup>a</sup>	n/e	42 <sup>a</sup> 42 <sup>b</sup>

Study design with <sup>a</sup>: indacaterol 150 microgram, salmeterol and placebo; <sup>b</sup>: indacaterol 150 and 300 microgram, tiotropium and placebo; <sup>c</sup>: indacaterol 300 microgram, formoterol and placebo  
<sup>†</sup> MCID = minimal clinically important difference ( $\geq 1$  point change in TDI,  $\geq 4$  point change in SGRQ)

n/e= not evaluated at six months

### Paediatric population

The European Medicines Agency has waived the obligation to submit the results of studies with Onbrez Breezhaler in all subsets of the paediatric population in chronic obstructive pulmonary disease (COPD) (see section 4.2 for information on paediatric use).

## **5.2 Pharmacokinetic properties**

Indacaterol is a chiral molecule with R-configuration.

Pharmacokinetic data were obtained from a number of clinical studies, from healthy volunteers and COPD patients.

### Absorption

The median time to reach peak serum concentrations of indacaterol was approximately 15 min after single or repeated inhaled doses. Systemic exposure to indacaterol increased with increasing dose (150 microgram to 600 microgram) in a dose proportional manner. Absolute bioavailability of indacaterol after an inhaled dose was on average 43% to 45%. Systemic exposure results from a composite of pulmonary and gastrointestinal absorption; about 75% of systemic exposure was from pulmonary absorption and about 25% from gastrointestinal absorption.



Indacaterol serum concentrations increased with repeated once-daily administration. Steady state was achieved within 12 to 14 days. The mean accumulation ratio of indacaterol, i.e. AUC over the 24-h dosing interval on Day 14 compared to Day 1, was in the range of 2.9 to 3.5 for once-daily inhaled doses between 150 microgram and 600 microgram.

#### Distribution

After intravenous infusion the volume of distribution of indacaterol during the terminal elimination phase was 2557 litres indicating an extensive distribution. The *in vitro* human serum and plasma protein binding was 94.1-95.3% and 95.1-96.2%, respectively.

#### Biotransformation

After oral administration of radiolabelled indacaterol in a human ADME (absorption, distribution, metabolism, excretion) study, unchanged indacaterol was the main component in serum, accounting for about one third of total drug-related AUC over 24 hours. A hydroxylated derivative was the most prominent metabolite in serum. Phenolic O-glucuronides of indacaterol and hydroxylated indacaterol were further prominent metabolites. A diastereomer of the hydroxylated derivative, a N-glucuronide of indacaterol, and C- and N-dealkylated products were further metabolites identified.

*In vitro* investigations indicated that UGT1A1 is the only UGT isoform that metabolised indacaterol to the phenolic O-glucuronide. The oxidative metabolites were found in incubations with recombinant CYP1A1, CYP2D6, and CYP3A4. CYP3A4 is concluded to be the predominant isoenzyme responsible for hydroxylation of indacaterol. *In vitro* investigations further indicated that indacaterol is a low affinity substrate for the efflux pump P-gp.

#### Elimination

In clinical studies which included urine collection, the amount of indacaterol excreted unchanged via urine was generally lower than 2% of the dose. Renal clearance of indacaterol was, on average, between 0.46 and 1.20 litres/hour. When compared with the serum clearance of indacaterol of 23.3 litres/hour, it is evident that renal clearance plays a minor role (about 2 to 5% of systemic clearance) in the elimination of systemically available indacaterol.

In a human ADME study where indacaterol was given orally, the faecal route of excretion was dominant over the urinary route. Indacaterol was excreted into human faeces primarily as unchanged parent substance (54% of the dose) and, to a lesser extent, hydroxylated indacaterol metabolites (23% of the dose). Mass balance was complete with  $\geq 90\%$  of the dose recovered in the excreta.

Indacaterol serum concentrations declined in a multi-phasic manner with an average terminal half-life ranging from 45.5 to 126 hours. The effective half-life, calculated from the accumulation of indacaterol after repeated dosing ranged from 40 to 52 hours which is consistent with the observed time-to-steady state of approximately 12-14 days.

#### Special populations

A population pharmacokinetic analysis showed that there is no clinically relevant effect of age (adults up to 88 years), sex, weight (32-168 kg) or race on the pharmacokinetics of indacaterol. It did not suggest any difference between ethnic subgroups in this population.

Patients with mild and moderate hepatic impairment showed no relevant changes in  $C_{max}$  or AUC of indacaterol, nor did protein binding differ between mild and moderate hepatic impaired subjects and their healthy controls. Studies in subjects with severe hepatic impairment were not performed.

Due to the very low contribution of the urinary pathway to total body elimination, a study in renally impaired subjects was not performed.

### **5.3 Preclinical safety data**

Effects on the cardiovascular system attributable to the beta<sub>2</sub>-agonistic properties of indacaterol included tachycardia, arrhythmias and myocardial lesions in dogs. Mild irritancy of the nasal cavity and larynx were seen in rodents. All these findings occurred at exposures sufficiently in excess of those anticipated in humans.

Although indacaterol did not affect general reproductive performance in a rat fertility study, a decrease in the number of pregnant F<sub>1</sub> offspring was observed in the peri- and post-developmental rat study at an exposure 14-fold higher than in humans treated with Onbrez Breezhaler. Indacaterol was not embryotoxic or teratogenic in rats or rabbits.

Genotoxicity studies did not reveal any mutagenic or clastogenic potential. Carcinogenicity was assessed in a two-year rat study and a six-month transgenic mouse study. Increased incidences of benign ovarian leiomyoma and focal hyperplasia of ovarian smooth muscle in rats were consistent with similar findings reported for other beta<sub>2</sub>-adrenergic agonists. No evidence of carcinogenicity was seen in mice. Systemic exposures (AUC) in rats and mice at the no-observed adverse effect levels in these studies were at least 7- and 49-fold higher, respectively, than in humans treated with Onbrez Breezhaler once a day at a dose of 300 microgram.

## **6. PHARMACEUTICAL PARTICULARS**

### **6.1 List of excipients**

#### Capsule content

Lactose monohydrate

#### Capsule shell

Gelatin

### **6.2 Incompatibilities**

Not applicable.

### **6.3 Shelf life**

2 years.

### **6.4 Special precautions for storage**

Do not store above 30°C.

Onbrez Breezhaler capsules must always be stored in the blister to protect from moisture and only removed immediately before use.

## 6.5 Nature and contents of container

Onbrez Breezhaler is a single-dose inhalation device. Inhaler body and cap are made from acrylonitrile butadiene styrene, push buttons are made from methyl methacrylate acrylonitrile butadiene styrene. Needles and springs are made from stainless steel.

PA/Alu/PVC - Alu blister packs, containing 10 hard capsules, with an inhaler made from plastic materials provided in each pack.

Carton containing 10 capsules (1x10 capsule blister strips) and one Onbrez Breezhaler inhaler.  
Carton containing 30 capsules (3x10 capsule blister strips) and one Onbrez Breezhaler inhaler.



Multipack comprising 2 packs (each containing 30 capsules and 1 inhaler).  
Multipack comprising 3 packs (each containing 30 capsules and 1 inhaler).  
Multipack comprising 30 packs (each containing 10 capsules and 1 inhaler).

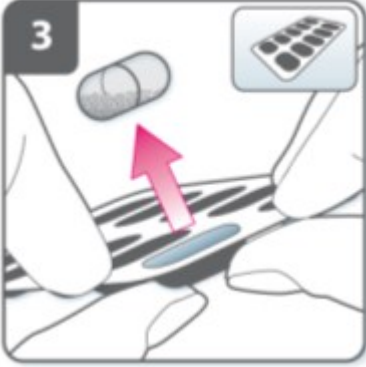
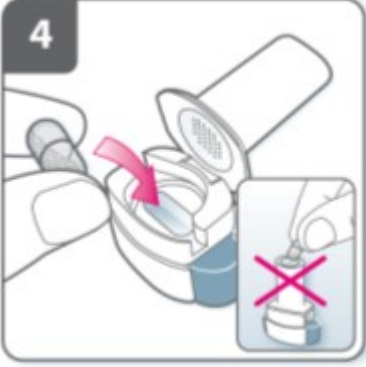

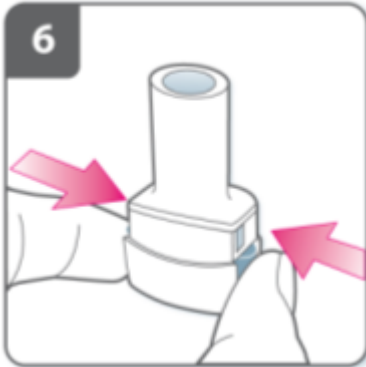
Not all pack sizes may be marketed.



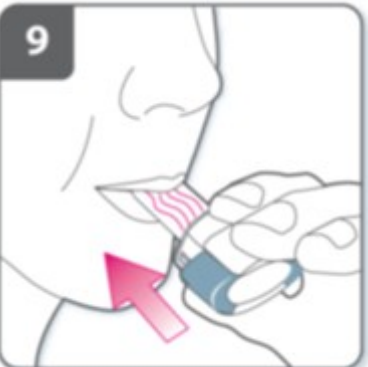
## 6.6 Special precautions for disposal and other handling

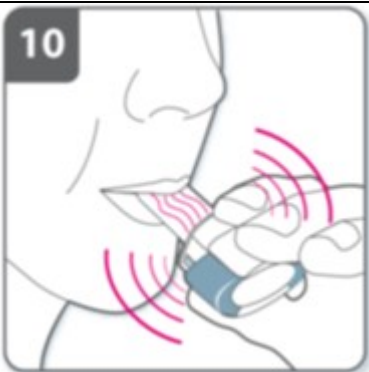
The Onbrez Breezhaler inhaler provided with each new prescription should be used. Dispose of each inhaler after 30 days of use.

### Instructions for handling and use

	<b>Pull off the cap.</b>
	<b>Open inhaler:</b> Hold the base of the inhaler firmly and tilt the mouthpiece. This opens the inhaler.

	<p><b>Prepare capsule:</b>  <b>Immediately before use</b>, with dry hands, remove one capsule from the blister.</p>
	<p><b>Insert capsule:</b>  Place the capsule into the capsule chamber.</p> <p><b>Never place a capsule directly into the mouthpiece.</b></p>
	<p><b>Close the inhaler:</b>  Close the inhaler until you hear a “click”.</p>
	<p><b>Pierce the capsule:</b></p> <ul style="list-style-type: none"> <li>• Hold the inhaler upright with the mouthpiece pointing up.</li> <li>• Pierce the capsule by firmly pressing together both side buttons at the same time. <b>Do this only once.</b></li> <li>• You should hear a “click” as the capsule is being pierced.</li> </ul>

	<p><b>Release the side buttons fully.</b></p>
	<p><b>Breathe out:</b> Before placing the mouthpiece in your mouth, breathe out fully.</p> <p><b>Do not blow into the mouthpiece.</b></p>
	<p><b>Inhale the medicine</b> To breathe the medicine deeply into your airways:</p> <ul style="list-style-type: none"> <li>• Hold the inhaler as shown in the picture. The side buttons should be facing left and right. Do not press the side buttons.</li> <li>• Place the mouthpiece in your mouth and close your lips firmly around it.</li> <li>• Breathe in rapidly but steadily and as deeply as you can.</li> </ul>

**Note:**

As you breathe in through the inhaler, the capsule spins around in the chamber and you should hear a whirring noise. You will experience a sweet flavour as the medicine goes into your lungs.

**Additional information**

Occasionally, very small pieces of the capsule can get past the screen and enter your mouth. If this happens, you may be able to feel these pieces on your tongue. It is not harmful if these pieces are swallowed or inhaled. The chances of the capsule shattering will be increased if the capsule is accidentally pierced more than once (step 6).

**If you do not hear a whirring noise:**

The capsule may be stuck in the capsule chamber. If this happens:

- Open the inhaler and carefully loosen the capsule by tapping the base of the inhaler. Do not press the side buttons.
- Inhale the medicine again by repeating steps 8 and 9.

**Hold breath:**

After you have inhaled the medicine:

- Hold your breath for at least 5-10 seconds or as long as you comfortably can while taking the inhaler out of your mouth.
- Then breathe out.
- Open the inhaler to see if any powder is left in the capsule.

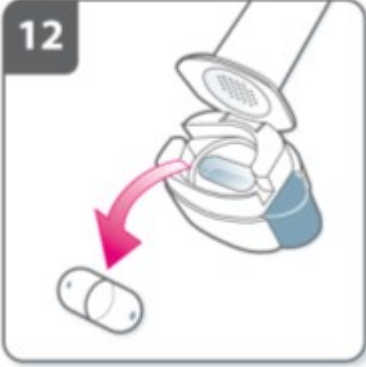

**If there is powder left in the capsule:**

- Close the inhaler.
- Repeat steps 8, 9, 10 and 11.

Most people are able to empty the capsule with one or two inhalations.

**Additional information**

Some people may occasionally cough briefly soon after inhaling the medicine. If you do, don't worry. As long as the capsule is empty, you have received enough of your medicine.

	<p><b>After you have finished taking</b> your medicine:</p> <ul style="list-style-type: none"> <li>• Open the mouthpiece again, and remove the empty capsule by tipping it out of the capsule chamber. Put the empty capsule in your household waste.</li> <li>• Close the inhaler and replace the cap.</li> </ul> <p><b>Do not store the capsules in the Onbrez Breezhaler inhaler.</b></p>
	<p><b>Mark daily dose tracker:</b> On the inside of the pack there is a daily dose tracker. Put a mark in today's box if it helps to remind you of when your next dose is due.</p>

## 7. MARKETING AUTHORISATION HOLDER

Novartis Europharm Limited  
Wimblehurst Road  
Horsham  
West Sussex, RH12 5AB  
United Kingdom

## 8. MARKETING AUTHORISATION NUMBER(S)

EU/1/09/593/006-010

## 9. DATE OF FIRST AUTHORISATION/RENEWAL OF THE AUTHORISATION

30.11.2009

## 10. DATE OF REVISION OF THE TEXT

Detailed information on this medicinal product is available on the website of the European Medicines Agency <http://www.ema.europa.eu>

## **ANNEX II**

- A. MANUFACTURER RESPONSIBLE FOR BATCH RELEASE**
- B. CONDITIONS OR RESTRICTIONS REGARDING SUPPLY AND USE**
- C. OTHER CONDITIONS AND REQUIREMENTS OF THE MARKETING AUTHORISATION**
- D. CONDITIONS OR RESTRICTIONS WITH REGARD TO THE SAFE AND EFFECTIVE USE OF THE MEDICINAL PRODUCT**



## **A. MANUFACTURER RESPONSIBLE FOR BATCH RELEASE**

### Name and address of the manufacturer responsible for batch release

Novartis Pharma GmbH  
Roonstrasse 25  
D-90429 Nürnberg  
Germany

## **B. CONDITIONS OR RESTRICTIONS REGARDING SUPPLY AND USE**

Medicinal product subject to medical prescription.

## **C. OTHER CONDITIONS AND REQUIREMENTS OF THE MARKETING AUTHORISATION**

### **• Periodic Safety Update Reports**

The marketing authorisation holder shall submit periodic safety update reports for this product in accordance with the requirements set out in the list of Union reference dates (EURD list) provided for under Article 107c(7) of Directive 2001/83/EC and published on the European medicines web-portal.

## **D. CONDITIONS OR RESTRICTIONS WITH REGARD TO THE SAFE AND EFFECTIVE USE OF THE MEDICINAL PRODUCT**

### **• Risk Management Plan (RMP)**

The MAH shall perform the required pharmacovigilance activities and interventions detailed in the agreed RMP presented in Module 1.8.2 of the Marketing Authorisation and any agreed subsequent updates of the RMP.

An updated RMP should be submitted:

- At the request of the European Medicines Agency
- Whenever the risk management system is modified, especially as the result of new information being received that may lead to a significant change to the benefit/risk profile or as the result of an important (pharmacovigilance or risk minimisation) milestone being reached.

If the dates for submission of a PSUR and the update of a RMP coincide, they can be submitted at the same time.

### **• Additional risk minimisation measures**

The Marketing Authorisation Holder (MAH) shall ensure, at launch, that physicians who are expected to prescribe/use Onbrez Breezhaler and pharmacists are provided with an information card containing the following elements:

- Indication is for maintenance bronchodilator treatment of airflow obstruction in adult patients with COPD.
- Onbrez Breezhaler should not be used in asthma due to the absence of long-term outcome data in asthma with Onbrez Breezhaler.
- Recommended dose is the inhalation of the content of one 150 microgram capsule once a day, using the Onbrez Breezhaler inhaler. The dose should only be increased on medical advice.

All materials will refer to summary of product characteristics for full prescribing information.

**ANNEX III**  
**LABELLING AND PACKAGE LEAFLET**

## **A. LABELLING**

**PARTICULARS TO APPEAR ON THE OUTER PACKAGING**

**OUTER CARTON OF UNIT PACK**

**1. NAME OF THE MEDICINAL PRODUCT**

Onbrez Breezhaler 150 microgram inhalation powder, hard capsules  
Indacaterol

**2. STATEMENT OF ACTIVE SUBSTANCE(S)**

Each capsule contains indacaterol maleate equivalent to 150 microgram indacaterol.

**3. LIST OF EXCIPIENTS**

Contains lactose monohydrate (see package leaflet for further information) and gelatin.

**4. PHARMACEUTICAL FORM AND CONTENTS**

10 capsules + 1 inhaler  
30 capsules + 1 inhaler

**5. METHOD AND ROUTE(S) OF ADMINISTRATION**

Inhalation use  
Read the package leaflet before use.

**6. SPECIAL WARNING THAT THE MEDICINAL PRODUCT MUST BE STORED OUT OF THE SIGHT AND REACH OF CHILDREN**

Keep out of the sight and reach of children.

**7. OTHER SPECIAL WARNING(S), IF NECESSARY**

For use only with the inhaler provided in the pack.  
Do not swallow capsules.  
Lift here to open.

**8. EXPIRY DATE**

EXP

**9. SPECIAL STORAGE CONDITIONS**

Do not store above 30°C.

Store in the original package to protect from moisture and do not remove until immediately before use.

**10. SPECIAL PRECAUTIONS FOR DISPOSAL OF UNUSED MEDICINAL PRODUCTS OR WASTE MATERIALS DERIVED FROM SUCH MEDICINAL PRODUCTS, IF APPROPRIATE****11. NAME AND ADDRESS OF THE MARKETING AUTHORISATION HOLDER**

Novartis Europharm Limited  
Wimblehurst Road  
Horsham  
West Sussex, RH12 5AB  
United Kingdom

**12. MARKETING AUTHORISATION NUMBER(S)**

EU/1/09/593/001

10 capsules + 1 inhaler

EU/1/09/593/002

30 capsules + 1 inhaler

**13. BATCH NUMBER**

Lot

**14. GENERAL CLASSIFICATION FOR SUPPLY**

Medicinal product subject to medical prescription.

**15. INSTRUCTIONS ON USE****16. INFORMATION IN BRAILLE**

Onbrez Breezhaler 150

**PARTICULARS TO APPEAR ON THE OUTER PACKAGING**

**OUTER CARTON OF MULTIPACK (INCLUDING BLUE BOX)**

**1. NAME OF THE MEDICINAL PRODUCT**

Onbrez Breezhaler 150 microgram inhalation powder, hard capsules  
Indacaterol

**2. STATEMENT OF ACTIVE SUBSTANCE(S)**

Each capsule contains indacaterol maleate equivalent to 150 microgram indacaterol.

**3. LIST OF EXCIPIENTS**

Contains lactose monohydrate (see package leaflet for further information) and gelatin.

**4. PHARMACEUTICAL FORM AND CONTENTS**

60 capsules + 2 inhalers  
90 capsules + 3 inhalers  
300 capsules + 30 inhalers

Multipack comprising 2 packs (each containing 30 capsules and 1 inhaler).  
Multipack comprising 3 packs (each containing 30 capsules and 1 inhaler).  
Multipack comprising 30 packs (each containing 10 capsules and 1 inhaler).

**5. METHOD AND ROUTE(S) OF ADMINISTRATION**

Inhalation use  
Read the package leaflet before use.

**6. SPECIAL WARNING THAT THE MEDICINAL PRODUCT MUST BE STORED OUT OF THE SIGHT AND REACH OF CHILDREN**

Keep out of the sight and reach of children.

**7. OTHER SPECIAL WARNING(S), IF NECESSARY**

For use only with the inhaler provided in the pack.  
Do not swallow capsules.

**8. EXPIRY DATE**

EXP

**9. SPECIAL STORAGE CONDITIONS**

Do not store above 30°C.

Store in the original package to protect from moisture and do not remove until immediately before use.

**10. SPECIAL PRECAUTIONS FOR DISPOSAL OF UNUSED MEDICINAL PRODUCTS OR WASTE MATERIALS DERIVED FROM SUCH MEDICINAL PRODUCTS, IF APPROPRIATE****11. NAME AND ADDRESS OF THE MARKETING AUTHORISATION HOLDER**

Novartis Europharm Limited  
Wimblehurst Road  
Horsham  
West Sussex, RH12 5AB  
United Kingdom

**12. MARKETING AUTHORISATION NUMBER(S)**

EU/1/09/593/003	60 capsules + 2 inhalers
EU/1/09/593/004	90 capsules + 3 inhalers
EU/1/09/593/005	300 capsules + 30 inhalers

**13. BATCH NUMBER**

Lot

**14. GENERAL CLASSIFICATION FOR SUPPLY**

Medicinal product subject to medical prescription.

**15. INSTRUCTIONS ON USE****16. INFORMATION IN BRAILLE**

Onbrez Breezhaler 150

**PARTICULARS TO APPEAR ON THE OUTER PACKAGING**

**INTERMEDIATE CARTON OF MULTIPACK (WITHOUT BLUE BOX)**

**1. NAME OF THE MEDICINAL PRODUCT**

Onbrez Breezhaler 150 microgram inhalation powder, hard capsules  
Indacaterol

**2. STATEMENT OF ACTIVE SUBSTANCE(S)**

Each capsule contains indacaterol maleate equivalent to 150 microgram indacaterol.

**3. LIST OF EXCIPIENTS**

Contains lactose monohydrate (see package leaflet for further information) and gelatin.

**4. PHARMACEUTICAL FORM AND CONTENTS**

10 capsules  
30 capsules

Component of a multipack comprising 2 packs (each containing 30 capsules and 1 inhaler).  
Component of a multipack comprising 3 packs (each containing 30 capsules and 1 inhaler).  
Component of a multipack comprising 30 packs (each containing 10 capsules and 1 inhaler).

**5. METHOD AND ROUTE(S) OF ADMINISTRATION**

Inhalation use  
Read the package leaflet before use.

**6. SPECIAL WARNING THAT THE MEDICINAL PRODUCT MUST BE STORED OUT OF THE SIGHT AND REACH OF CHILDREN**

Keep out of the sight and reach of children.

**7. OTHER SPECIAL WARNING(S), IF NECESSARY**

For use only with the inhaler provided in the pack.  
Do not swallow capsules.  
Lift here to open.

**8. EXPIRY DATE**

EXP



**9. SPECIAL STORAGE CONDITIONS**

Do not store above 30°C.

Store in the original package to protect from moisture and do not remove until immediately before use.

**10. SPECIAL PRECAUTIONS FOR DISPOSAL OF UNUSED MEDICINAL PRODUCTS OR WASTE MATERIALS DERIVED FROM SUCH MEDICINAL PRODUCTS, IF APPROPRIATE****11. NAME AND ADDRESS OF THE MARKETING AUTHORISATION HOLDER**

Novartis Europharm Limited  
Wimblehurst Road  
Horsham  
West Sussex, RH12 5AB  
United Kingdom

**12. MARKETING AUTHORISATION NUMBER(S)**

EU/1/09/593/003	60 capsules + 2 inhalers
EU/1/09/593/004	90 capsules + 3 inhalers
EU/1/09/593/005	300 capsules + 30 inhalers

**13. BATCH NUMBER**

Lot

**14. GENERAL CLASSIFICATION FOR SUPPLY**

Medicinal product subject to medical prescription.

**15. INSTRUCTIONS ON USE****16. INFORMATION IN BRAILLE**

Onbrez Breezhaler 150

**PARTICULARS TO APPEAR ON THE OUTER PACKAGING**

**INNER LID OF OUTER CARTON OF UNIT PACK AND OF INTERMEDIATE CARTON OF MULTIPACK**

**1. OTHER**

See package leaflet for pictures and information on using Onbrez Breezhaler.

Start date

**MINIMUM PARTICULARS TO APPEAR ON BLISTERS OR STRIPS**

**BLISTERS**

**1. NAME OF THE MEDICINAL PRODUCT**

Onbrez Breezhaler 150 microgram inhalation powder, hard capsules  
Indacaterol

**2. NAME OF THE MARKETING AUTHORISATION HOLDER**

Novartis Europharm Limited

**3. EXPIRY DATE**

EXP

**4. BATCH NUMBER**

Lot

**5. OTHER**

Inhalation use only. Do not swallow.

**PARTICULARS TO APPEAR ON THE OUTER PACKAGING**

**OUTER CARTON OF UNIT PACK**

**1. NAME OF THE MEDICINAL PRODUCT**

Onbrez Breezhaler 300 microgram inhalation powder, hard capsules  
Indacaterol

**2. STATEMENT OF ACTIVE SUBSTANCE(S)**

Each capsule contains indacaterol maleate equivalent to 300 microgram indacaterol.

**3. LIST OF EXCIPIENTS**

Contains lactose monohydrate (see package leaflet for further information) and gelatin.

**4. PHARMACEUTICAL FORM AND CONTENTS**

10 capsules + 1 inhaler  
30 capsules + 1 inhaler

**5. METHOD AND ROUTE(S) OF ADMINISTRATION**

Inhalation use  
Read the package leaflet before use.

**6. SPECIAL WARNING THAT THE MEDICINAL PRODUCT MUST BE STORED OUT OF THE SIGHT AND REACH OF CHILDREN**

Keep out of the sight and reach of children.

**7. OTHER SPECIAL WARNING(S), IF NECESSARY**

For use only with the inhaler provided in the pack.  
Do not swallow capsules.  
Lift here to open.

**8. EXPIRY DATE**

EXP

**9. SPECIAL STORAGE CONDITIONS**

Do not store above 30°C.

Store in the original package to protect from moisture and do not remove until immediately before use.

**10. SPECIAL PRECAUTIONS FOR DISPOSAL OF UNUSED MEDICINAL PRODUCTS OR WASTE MATERIALS DERIVED FROM SUCH MEDICINAL PRODUCTS, IF APPROPRIATE****11. NAME AND ADDRESS OF THE MARKETING AUTHORISATION HOLDER**

Novartis Europharm Limited  
Wimblehurst Road  
Horsham  
West Sussex, RH12 5AB  
United Kingdom

**12. MARKETING AUTHORISATION NUMBER(S)**

EU/1/09/593/006

10 capsules + 1 inhaler

EU/1/09/593/007

30 capsules + 1 inhaler

**13. BATCH NUMBER**

Lot

**14. GENERAL CLASSIFICATION FOR SUPPLY**

Medicinal product subject to medical prescription.

**15. INSTRUCTIONS ON USE****16. INFORMATION IN BRAILLE**

Onbrez Breezhaler 300

**PARTICULARS TO APPEAR ON THE OUTER PACKAGING**

**OUTER CARTON OF MULTIPACK (INCLUDING BLUE BOX)**

**1. NAME OF THE MEDICINAL PRODUCT**

Onbrez Breezhaler 300 microgram inhalation powder, hard capsules  
Indacaterol

**2. STATEMENT OF ACTIVE SUBSTANCE(S)**

Each capsule contains indacaterol maleate equivalent to 300 microgram indacaterol.

**3. LIST OF EXCIPIENTS**

Contains lactose monohydrate (see package leaflet for further information) and gelatin.

**4. PHARMACEUTICAL FORM AND CONTENTS**

60 capsules + 2 inhalers  
90 capsules + 3 inhalers  
300 capsules + 30 inhalers

Multipack comprising 2 packs (each containing 30 capsules and 1 inhaler).  
Multipack comprising 3 packs (each containing 30 capsules and 1 inhaler).  
Multipack comprising 30 packs (each containing 10 capsules and 1 inhaler).

**5. METHOD AND ROUTE(S) OF ADMINISTRATION**

Inhalation use  
Read the package leaflet before use.

**6. SPECIAL WARNING THAT THE MEDICINAL PRODUCT MUST BE STORED OUT OF THE SIGHT AND REACH OF CHILDREN**

Keep out of the sight and reach of children.

**7. OTHER SPECIAL WARNING(S), IF NECESSARY**

For use only with the inhaler provided in the pack.  
Do not swallow capsules.

**8. EXPIRY DATE**

EXP

**9. SPECIAL STORAGE CONDITIONS**

Do not store above 30°C.

Store in the original package to protect from moisture and do not remove until immediately before use.

**10. SPECIAL PRECAUTIONS FOR DISPOSAL OF UNUSED MEDICINAL PRODUCTS OR WASTE MATERIALS DERIVED FROM SUCH MEDICINAL PRODUCTS, IF APPROPRIATE****11. NAME AND ADDRESS OF THE MARKETING AUTHORISATION HOLDER**

Novartis Europharm Limited  
Wimblehurst Road  
Horsham  
West Sussex, RH12 5AB  
United Kingdom

**12. MARKETING AUTHORISATION NUMBER(S)**

EU/1/09/593/008	60 capsules + 2 inhalers
EU/1/09/593/009	90 capsules + 3 inhalers
EU/1/09/593/010	300 capsules + 30 inhalers

**13. BATCH NUMBER**

Lot

**14. GENERAL CLASSIFICATION FOR SUPPLY**

Medicinal product subject to medical prescription.

**15. INSTRUCTIONS ON USE****16. INFORMATION IN BRAILLE**

Onbrez Breezhaler 300

**PARTICULARS TO APPEAR ON THE OUTER PACKAGING**

**INTERMEDIATE CARTON OF MULTIPACK (WITHOUT BLUE BOX)**

**1. NAME OF THE MEDICINAL PRODUCT**

Onbrez Breezhaler 300 microgram inhalation powder, hard capsules  
Indacaterol

**2. STATEMENT OF ACTIVE SUBSTANCE(S)**

Each capsule contains indacaterol maleate equivalent to 300 microgram indacaterol.

**3. LIST OF EXCIPIENTS**

Contains lactose monohydrate (see package leaflet for further information) and gelatin.

**4. PHARMACEUTICAL FORM AND CONTENTS**

10 capsules  
30 capsules

Component of a multipack comprising 2 packs (each containing 30 capsules and 1 inhaler).  
Component of a multipack comprising 3 packs (each containing 30 capsules and 1 inhaler).  
Component of a multipack comprising 30 packs (each containing 10 capsules and 1 inhaler).

**5. METHOD AND ROUTE(S) OF ADMINISTRATION**

Inhalation use  
Read the package leaflet before use.

**6. SPECIAL WARNING THAT THE MEDICINAL PRODUCT MUST BE STORED OUT OF THE SIGHT AND REACH OF CHILDREN**

Keep out of the sight and reach of children.

**7. OTHER SPECIAL WARNING(S), IF NECESSARY**

For use only with the inhaler provided in the pack.  
Do not swallow capsules.  
Lift here to open.

**8. EXPIRY DATE**

EXP



**9. SPECIAL STORAGE CONDITIONS**

Do not store above 30°C.

Store in the original package to protect from moisture and do not remove until immediately before use.

**10. SPECIAL PRECAUTIONS FOR DISPOSAL OF UNUSED MEDICINAL PRODUCTS OR WASTE MATERIALS DERIVED FROM SUCH MEDICINAL PRODUCTS, IF APPROPRIATE****11. NAME AND ADDRESS OF THE MARKETING AUTHORISATION HOLDER**

Novartis Europharm Limited  
Wimblehurst Road  
Horsham  
West Sussex, RH12 5AB  
United Kingdom

**12. MARKETING AUTHORISATION NUMBER(S)**

EU/1/09/593/008	60 capsules + 2 inhalers
EU/1/09/593/009	90 capsules + 3 inhalers
EU/1/09/593/010	300 capsules + 30 inhalers

**13. BATCH NUMBER**

Lot

**14. GENERAL CLASSIFICATION FOR SUPPLY**

Medicinal product subject to medical prescription.

**15. INSTRUCTIONS ON USE****16. INFORMATION IN BRAILLE**

Onbrez Breezhaler 300

**PARTICULARS TO APPEAR ON THE OUTER PACKAGING**

**INNER LID OF OUTER CARTON OF UNIT PACK AND OF INTERMEDIATE CARTON OF MULTIPACK**

**1. OTHER**

See package leaflet for pictures and information on using Onbrez Breezhaler.

Start date

**MINIMUM PARTICULARS TO APPEAR ON BLISTERS OR STRIPS**

**BLISTERS**

**1. NAME OF THE MEDICINAL PRODUCT**

Onbrez Breezhaler 300 microgram inhalation powder, hard capsules  
Indacaterol

**2. NAME OF THE MARKETING AUTHORISATION HOLDER**

Novartis Europharm Limited

**3. EXPIRY DATE**

EXP

**4. BATCH NUMBER**

Lot

**5. OTHER**

Inhalation use only. Do not swallow.

## **B. PACKAGE LEAFLET**

## **Package leaflet: Information for the user**

### **Onbrez Breezhaler 150 microgram inhalation powder, hard capsules Onbrez Breezhaler 300 microgram inhalation powder, hard capsules Indacaterol maleate**

**Read all of this leaflet carefully before you start using this medicine because it contains important information for you.**

- Keep this leaflet. You may need to read it again.
- If you have further questions, ask your doctor or pharmacist.
- This medicine has been prescribed for you only. Do not pass it on to others. It may harm them, even if their signs of illness are the same as yours.
- If you get any side effects, talk to your doctor or pharmacist. This includes any possible side effects not listed in this leaflet.

#### **What is in this leaflet:**

1. What Onbrez Breezhaler is and what it is used for
2. What you need to know before you use Onbrez Breezhaler
3. How to use Onbrez Breezhaler
4. Possible side effects
5. How to store Onbrez Breezhaler
6. Contents of the pack and other information

#### **1. What Onbrez Breezhaler is and what it is used for**

##### **What Onbrez Breezhaler is**

Onbrez Breezhaler contains the active substance indacaterol which belongs to a group of medicines called bronchodilators. When you inhale it, it relaxes the muscles in the walls of the small air passages in the lungs. This helps open up the airways, making it easier to get air in and out.

##### **What Onbrez Breezhaler is used for**

Onbrez Breezhaler is used in adults who have breathing difficulties due to a lung disease called chronic obstructive pulmonary disease (COPD). It helps you breathe more easily and minimise the effects of COPD.

## 2. What you need to know before you use Onbrez Breezhaler

Follow all the doctor's instructions carefully. They may differ from the general information contained in this leaflet.

### Do not use Onbrez Breezhaler

- if you are allergic to indacaterol, to lactose or gelatin, or any of the other ingredients of this medicine (listed in section 6).

If this applies to you, **tell your doctor without taking Onbrez Breezhaler**. If you think you may be allergic, ask your doctor for advice.

### Warnings and precautions

Talk to your doctor or pharmacist before using Onbrez Breezhaler

- if you have asthma (in this case you should not use Onbrez Breezhaler).
- if you have heart problems.
- if you have epilepsy.
- if you have thyroid gland problems (thyrotoxicosis).
- if you have diabetes.

### Children and adolescents

Onbrez Breezhaler **should not** be given to **children or adolescents below the age of 18 years**.

### During treatment with Onbrez Breezhaler,

- **Stop using the medicine and tell your doctor immediately** if you get tightness of the chest, coughing, wheezing or breathlessness immediately after using the medicine. These may be signs of a condition called bronchospasm.
- **Tell your doctor immediately** if your COPD symptoms (breathlessness, wheezing, cough) do not improve or get worse.

### Other medicines and Onbrez Breezhaler

Tell your doctor or pharmacist if you are taking, have recently taken or might take any other medicines.

In particular, please tell your doctor if you are using:

- medicines for breathing problems that are similar to Onbrez Breezhaler. You may be more likely to get side effects.
- medicines called beta blockers that are used for high blood pressure or other heart problems (such as propranolol), or for the eye problem called glaucoma (such as timolol).
- medicines that lower the amount of potassium in your blood. These include:
  - o steroids (e.g. prednisolone),
  - o diuretics (water tablets) used for high blood pressure such as hydrochlorothiazide,
  - o medicines for breathing problems such as theophylline.

### Onbrez Breezhaler with food and drink

You can inhale Onbrez Breezhaler anytime before or after food or drink.

### Pregnancy and breast-feeding

If you are pregnant or think that you may be pregnant, or if you are breast-feeding, tell your doctor before using Onbrez Breezhaler. You should not use Onbrez Breezhaler unless your doctor tells you so.

Ask your doctor or pharmacist for advice before taking any medicine.

### Driving and using machines

It is unlikely that Onbrez Breezhaler will affect your ability to drive and use machines.

### **3. How to use Onbrez Breezhaler**

Always use this medicine exactly as your doctor has told you. Check with your doctor or pharmacist if you are not sure.

#### **How much Onbrez Breezhaler to use**

- The usual dose is to inhale the content of one capsule each day. Your doctor may tell you to use the 150 microgram capsule or the 300 microgram capsule depending on your condition and on how you respond to the treatment. Do not use more than your doctor tells you to use.
- Use your inhaler at the same time each day, the effects last for 24 hours. This ensures that there is always enough medicine in your body to help you breathe more easily throughout the day and night. It will also help you to remember to use it.

#### **How to use Onbrez Breezhaler**

- In this pack, you will find an inhaler and capsules (in blister strips) that contain the medicine as inhalation powder. The Onbrez Breezhaler inhaler enables you to inhale the medicine contained in a capsule.
- Only use the capsules with the inhaler provided in this pack (Onbrez Breezhaler inhaler). The capsules should remain in the blister strip until you need to use them.
- When you start a new pack, use the new Onbrez Breezhaler inhaler that is supplied in the pack.
- Dispose of each inhaler after 30 days of use.
- Do not swallow the capsules.
- **Please read the instructions at the end of this leaflet for more information about how to use the inhaler.**

#### **If you use more Onbrez Breezhaler than you should**

If you have inhaled too much Onbrez Breezhaler or if someone else uses your capsules, tell your doctor immediately or go to the nearest emergency unit. Show the pack of Onbrez Breezhaler. Medical attention may be needed.

#### **If you forget to use Onbrez Breezhaler**

If you forget to inhale a dose, inhale just one dose at the usual time the next day. Do not inhale a double dose to make up for a forgotten dose.

#### **How long to continue your treatment with Onbrez Breezhaler**

- Keep using your treatment with Onbrez Breezhaler for as long as your doctor tells you.
- COPD is a long-term disease and you should use Onbrez Breezhaler **every day** and not only when you have breathing problems or other symptoms of COPD.

If you have questions about how long to continue your treatment with Onbrez Breezhaler, talk to your doctor or pharmacist.

#### **4. Possible side effects**

Like all medicines, this medicine can cause side effects, although not everybody gets them.

##### **Some side effects may be serious. Tell your doctor immediately**

- if you get crushing chest pain, or irregular heart beat.
- if you get symptoms of a hypersensitivity reaction such as rash, itching, hives, difficulty breathing or swallowing, dizziness.
- if you have difficulty breathing with wheezing or coughing.
- if you get high levels of sugar in your blood (diabetes). You will feel tired, very thirsty and hungry (without gaining weight) and will pass more urine than usual.

##### **Other side effects may include:**

##### **Very common side effects (may affect more than 1 in 10 people)**

- cold-like symptoms. You may get all or most of the following: sore throat, runny nose, blocked nose, sneezing, coughing, headache.

##### **Common side effects (may affect up to 1 in 10 people)**

- feeling of pressure or pain in the cheeks and forehead (inflammation of the sinuses)
- runny nose
- cough
- sore throat
- headache
- dizziness
- palpitations
- muscle spasm
- swollen hands, ankles and feet (oedema)
- itching/rash
- chest pain

##### **Uncommon side effects (may affect up to 1 in 100 people)**

- fast heart beat
- tingling or numbness

If you get any side effects, talk to your doctor or pharmacist. This includes any possible side effects not listed in this leaflet.

Some people occasionally cough soon after inhaling the medicine. Cough is a common symptom in COPD. If you experience coughing briefly after inhaling the medicine, do not worry. Check your inhaler to see if the capsule is empty and that you have received the full dose. If the capsule is empty, there is no need for concern. If the capsule is not empty then inhale again as directed.

#### **5. How to store Onbrez Breezhaler**

Keep this medicine out of the sight and reach of children.

Do not use this medicine after the expiry date which is stated on the box and blister strip. The expiry date refers to the last day of that month.

Do not store above 30°C.

Store in the original package in order to protect from moisture and do not remove until immediately before use.

Do not use this medicine if you notice that the pack is damaged or show signs of tampering.

Do not throw away any medicines via wastewater or household waste. Ask your pharmacist how to throw away medicines you no longer use. These measures will help protect the environment.



## 6. Contents of the pack and other information

### What Onbrez Breezhaler contains

- Each Onbrez Breezhaler 150 microgram capsule contains 150 microgram indacaterol as indacaterol maleate. The other ingredients are lactose and gelatin.
- Each Onbrez Breezhaler 300 microgram capsule contains 300 microgram indacaterol as indacaterol maleate. The other ingredients are lactose and gelatin.

### What Onbrez Breezhaler looks like and content of the pack

In this pack, you will find an inhaler, together with capsules in blister strips. The capsules are clear and colourless and contain a white powder.

- Onbrez Breezhaler 150 microgram capsules are clear and colourless. They have a **black** product code “**IDL 150**” printed above and a **black** company logo (ℓ) printed below a **black** bar.
- Onbrez Breezhaler 300 microgram capsules are clear and colourless. They have a **blue** product code “**IDL 300**” printed above and a **blue** company logo (ℓ) printed below a **blue** bar.

The following pack sizes are available:

Carton containing 10 capsules (1x10 capsule blister strips) and 1 inhaler.

Carton containing 30 capsules (3x10 capsule blister strips) and 1 inhaler.

Multipack comprising 2 packs (each containing 30 capsules and 1 inhaler).

Multipack comprising 3 packs (each containing 30 capsules and 1 inhaler).

Multipack comprising 30 packs (each containing 10 capsules and 1 inhaler).

Not all pack sizes or strengths may be available in your country.

### Marketing Authorisation Holder

Novartis Europharm Limited  
Wimblehurst Road  
Horsham  
West Sussex, RH12 5AB  
United Kingdom

### Manufacturer

Novartis Pharma GmbH  
Roonstraße 25  
D-90429 Nuremberg  
Germany

For any information about this medicine, please contact the local representative of the Marketing Authorisation Holder:

**België/Belgique/Belgien**

Novartis Pharma N.V.  
Tél/Tel: +32 2 246 16 11

**България**

Novartis Pharma Services Inc.  
Тел.: +359 2 489 98 28

**Česká republika**

Novartis s.r.o.  
Tel: +420 225 775 111

**Danmark**

Novartis Healthcare A/S  
Tlf: +45 39 16 84 00

**Deutschland**

Novartis Pharma GmbH  
Tel: +49 911 273 0

**Eesti**

Novartis Pharma Services Inc.  
Tel: +372 66 30 810

**Ελλάδα**

Novartis (Hellas) A.E.B.E.  
Τηλ: +30 210 281 17 12

**España**

Novartis Farmacéutica, S.A.  
Tel: +34 93 306 42 00

**France**

Novartis Pharma S.A.S.  
Tél: +33 1 55 47 66 00

**Hrvatska**

Novartis Hrvatska d.o.o.  
Tel. +385 1 6274 220

**Ireland**

Novartis Ireland Limited  
Tel: +353 1 260 12 55

**Ísland**

Vistor hf.  
Sími: +354 535 7000

**Italia**

Novartis Farma S.p.A.  
Tel: +39 02 96 54 1

**Lietuva**

Novartis Pharma Services Inc.  
Tel: +370 5 269 16 50

**Luxembourg/Luxemburg**

Novartis Pharma N.V.  
Tél/Tel: +32 2 246 16 11

**Magyarország**

Novartis Hungária Kft. Pharma  
Tel.: +36 1 457 65 00

**Malta**

Novartis Pharma Services Inc.  
Tel: +356 2122 2872

**Nederland**

Novartis Pharma B.V.  
Tel: +31 26 37 82 111

**Norge**

Novartis Norge AS  
Tlf: +47 23 05 20 00

**Österreich**

Novartis Pharma GmbH  
Tel: +43 1 86 6570

**Polska**

Novartis Poland Sp. z o.o.  
Tel.: +48 22 375 4888

**Portugal**

Novartis Farma - Produtos Farmacêuticos, S.A.  
Tel: +351 21 000 8600

**România**

Novartis Pharma Services Romania SRL  
Tel: +40 21 31299 01

**Slovenija**

Novartis Pharma Services Inc.  
Tel: +386 1 300 75 50

**Slovenská republika**

Novartis Slovakia s.r.o.  
Tel: +421 2 5542 5439

**Suomi/Finland**

Novartis Finland Oy  
Puh/Tel: +358 (0)10 6133 200

**Κύπρος**

Novartis Pharma Services Inc.  
Τηλ: +357 22 690 690

**Sverige**

Novartis Sverige AB  
Tel: +46 8 732 32 00

**Latvija**

Novartis Pharma Services Inc.  
Tel: +371 67 887 070

**United Kingdom**

Novartis Pharmaceuticals UK Ltd.  
Tel: +44 1276 698370

**This leaflet was last revised in**

**Other sources of information**

Detailed information on this medicine is available on the European Medicines Agency website:  
<http://www.ema.europa.eu>

## INSTRUCTIONS FOR USE OF ONBREZ BREEZHALER INHALER

Please read the following instructions carefully to learn how to use and care for your Onbrez Breezhaler inhaler.

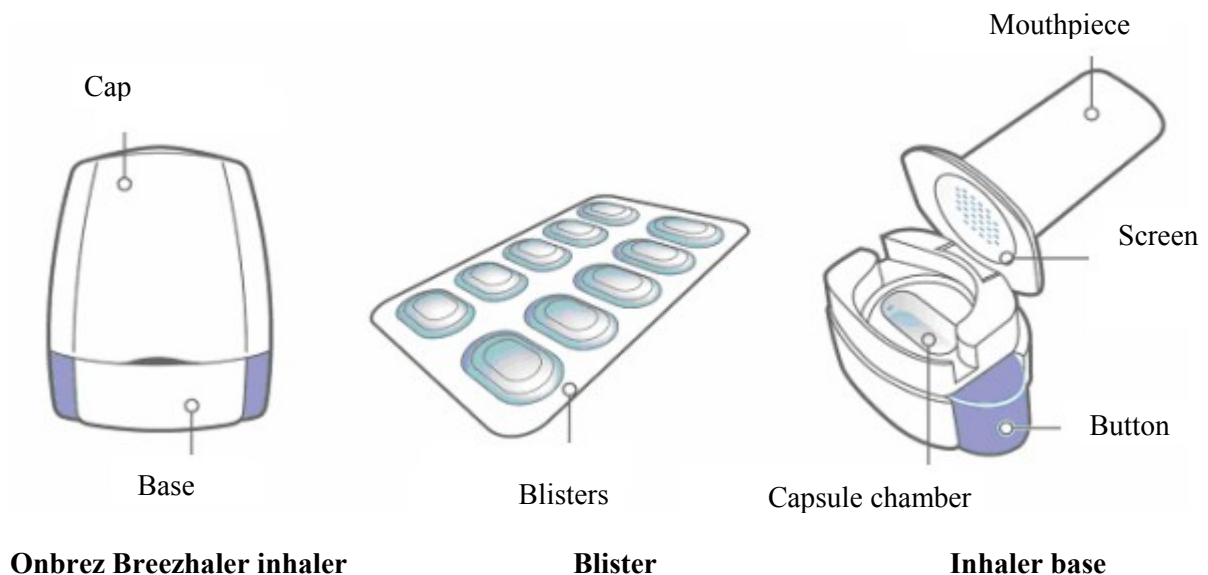
- **Only use the Onbrez Breezhaler inhaler contained in this pack.** Do not use Onbrez Breezhaler capsules with any other inhaler, and do not use Onbrez Breezhaler inhaler to take any other capsule medicine.
- When you start a new pack, only use the new Onbrez Breezhaler inhaler that is supplied in the pack.
- Dispose of each inhaler after 30 days of use.
- Ask your pharmacist how to dispose of medicines and inhalers no longer required.
- **Do not swallow the capsules.** The powder in the capsules is for you to inhale.

### Your Onbrez Breezhaler pack:

Each Onbrez Breezhaler pack contains:

- one Onbrez Breezhaler inhaler
- one or more blister strips containing Onbrez Breezhaler capsules to be used in the inhaler.

The Onbrez Breezhaler inhaler enables you to inhale the medicine contained in an Onbrez Breezhaler capsule.



## How to use your inhaler

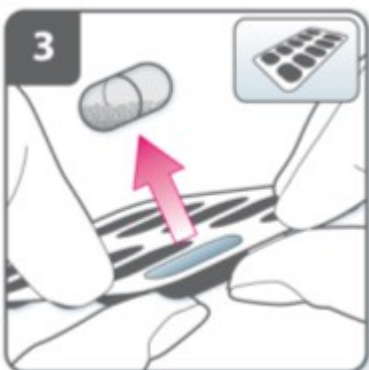


**Pull off the cap.**



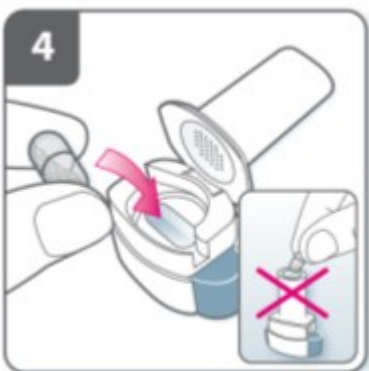
**Open inhaler:**

Hold the base of the inhaler firmly and tilt the mouthpiece. This opens the inhaler.



**Prepare capsule.**

**Immediately before use,** with dry hands, remove one capsule from the blister.



**Insert capsule:**

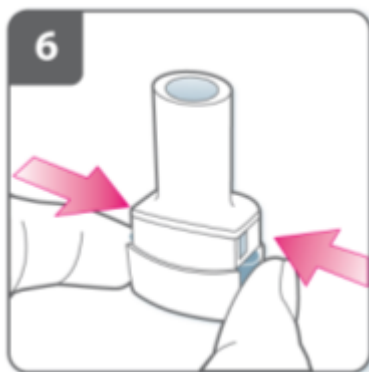
Place the capsule into the capsule chamber.

**Never place a capsule directly into the mouthpiece.**



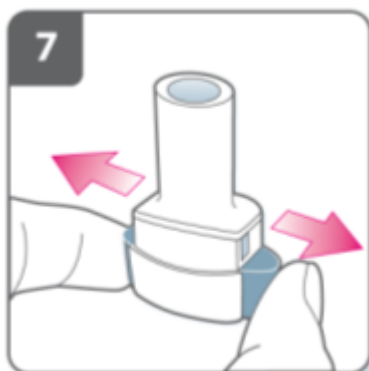
**Close the inhaler:**

Close the inhaler until you hear a “click”.



**Pierce the capsule:**

- Hold the inhaler upright with the mouthpiece pointing up.
- Pierce the capsule by firmly pressing together both side buttons at the same time. **Do this only once.**
- You should hear a “click” as the capsule is being pierced.



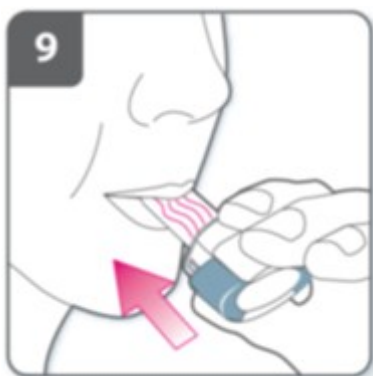
**Release the side buttons fully.**



**Breathe out:**

Before placing the mouthpiece in your mouth, breathe out fully.

**Do not blow into the mouthpiece.**

**Inhale the medicine:**

To breathe the medicine deeply into your airways:

- Hold the inhaler as shown in the picture. The side buttons should be facing left and right. Do not press the side buttons.
- Place the mouthpiece in your mouth and close your lips firmly around the mouthpiece.
- Breathe in rapidly but steadily and as deeply as you can.

**Note:**

As you breathe in through the inhaler, the capsule spins around in the chamber and you should hear a whirring noise. You will experience a sweet flavour as the medicine goes into your lungs.

**Additional information**

Occasionally, very small pieces of the capsule can get past the screen and enter your mouth. If this happens, you may be able to feel these pieces on your tongue. It is not harmful if these pieces are swallowed or inhaled. The chances of the capsule shattering will be increased if the capsule is accidentally pierced more than once (step 6).

**If you do not hear a whirring noise:**

The capsule may be stuck in the capsule chamber. If this happens:

- Open the inhaler and carefully loosen the capsule by tapping the base of the inhaler. Do not press the side buttons.
- Inhale the medicine again by repeating steps 8 and 9.



**Hold breath:**

After you have inhaled the medicine:

- Hold your breath for at least 5-10 seconds or as long as you comfortably can while taking the inhaler out of your mouth.
- Then breathe out.
- Open the inhaler to see if any powder is left in the capsule.

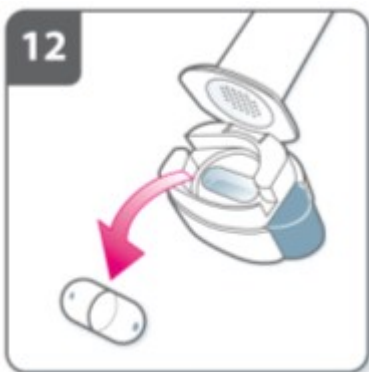
**If there is powder left in the capsule:**

- Close the inhaler.
- Repeat steps 8, 9, 10 and 11.

Most people are able to empty the capsule with one or two inhalations.

**Additional information**

Some people may occasionally cough briefly soon after inhaling the medicine. If you do, don't worry. As long as the capsule is empty, you have received enough of your medicine.



**After you have finished taking your medicine:**

- Open the mouthpiece again, remove the empty capsule by tipping it out of the capsule chamber. Put the empty capsule in your household waste.
- Close the inhaler and replace the cap.

**Do not store the capsules in the Onbrez Breezhaler inhaler.**



**Mark daily dose tracker:**

On the inside of the pack there is a daily dose tracker. Put a mark in today's box if it helps to remind you of when your next dose is due.



**REMEMBER:**

- **Do not swallow Onbrez Breezhaler capsules.**
- **Only use the Onbrez Breezhaler inhaler contained in this pack.**
- Onbrez Breezhaler capsules must always be stored in the blister, and only removed immediately before use.
- Never place a Onbrez Breezhaler capsule directly into the mouthpiece of the Onbrez Breezhaler inhaler.
- Do not press the side buttons more than once.
- Never blow into the mouthpiece of the Onbrez Breezhaler inhaler.
- Always release the push buttons before inhalation.
- Never wash the Onbrez Breezhaler inhaler with water. Keep it dry. See “How to clean your inhaler”.
- Never take the Onbrez Breezhaler inhaler apart.
- Always use the new Onbrez Breezhaler inhaler that comes with your new Onbrez Breezhaler medication pack. Dispose of each inhaler after 30 days of use.
- Do not store the capsules in the Onbrez Breezhaler inhaler.
- Always keep the Onbrez Breezhaler inhaler and Onbrez Breezhaler capsules in a dry place.

**How to clean your inhaler**

Clean your inhaler once a week.

- Wipe the mouthpiece inside and outside to remove any powder with a clean, dry lint-free cloth.
- Do not wash your inhaler with water. Keep it dry.
- Do not take the inhaler apart.

**ANNEX IV**

**SCIENTIFIC CONCLUSIONS AND GROUNDS RECOMMENDING THE VARIATION TO  
THE TERMS OF THE MARKETING AUTHORISATION(S)**

## **Scientific conclusions**

Taking into account the PRAC Assessment Report on the PSUR for Onbrez Breezhaler, Oslif Breezhaler and Hirobriz Breezhaler, the scientific conclusions of PRAC are as follows:

Intubation, hospitalisation and death due to asthma related events related to use in the asthma population is considered an important potential risk for indacaterol since it is a known class effect for long-acting beta<sub>2</sub>-adrenergic agonists when used in asthma. No information is currently included in the SmPC for indacaterol for this risk. Indacaterol is only indicated for Chronic Obstructive Pulmonary Disease (COPD), which distinguishes its use from that of other, established Long-Acting Beta- Agonists (LABA) which also have approved asthma indications. However some information regarding this risk should be included in the product information for indacaterol. Furthermore, it is relevant to state in the SmPC that the risk has been observed with LABAs when used for the treatment of asthma. Therefore, in view of available data, the PRAC considers that inclusion of this information to the product information is warranted.

Long-acting beta agonist agents are known to potentially affect QTc intervals. Available data for indacaterol do not demonstrate a relevant effect of QT prolongation from a dedicated QT-study during development or from clinical trials in COPD (although patients with a medical history of long QT syndrome or long QT interval at baseline were excluded). Post-marketing reports for QT prolongation have been evaluated in the PSURs and have not reveal data indicating a causal relationship with indacaterol so far. Therefore, in view of the available data, the PRAC considers that changes to the product information were warranted to better reflect the current evidence for QT-prolongation with indacaterol.

The CHMP agrees with the scientific conclusions made by the PRAC.

### **Grounds recommending the variation to the terms of the Marketing Authorisations**

On the basis of the scientific conclusions for Onbrez Breezhaler, Oslif Breezhaler and Hirobriz Breezhaler the CHMP is of the opinion that the benefit-risk balance of the medicinal products containing the active substance indacaterol is favourable subject to the proposed changes to the product information.

The CHMP recommends that the terms of the Marketing Authorisations should be varied.